



Data Spec  
Sheets



See Trade  
Prices



Web link to  
full range



Wolverine MCBs are available in C curve tripping characteristic and ideal for applications for the protection of resistive and inductive loads with low inrush current. Suitable for protecting distribution lines, lighting lines and motor circuits with high connecting currents, equipment in office and residential buildings. **PRODUCT CODES SHOWING "R" (TO INDICATE RED TOGGLE) IN CATALOGUE NUMBER** are configured for MCB/Main Switch applications.

Available in 1 pole and 3 pole. Complies with AS/NZS and IEC 60898-1.

Miniature Circuit Breakers (MCB) Series		Qty Per Box	Trade Ex GST
<b>WOMCB6102</b> <i>*Clipsal - MX9MC102</i>	MCB Miniature Circuit Breaker 6kA 1P 2A C Curve 230V 240V ac 1 Module Grey	12	\$10.59
<b>WOMCB6106</b> <i>*Clipsal - MX9MC106 *NHP - MD6M106 †Hager - MSN106</i>	MCB Miniature Circuit Breaker 6kA 1P 6A C Curve 230V 240V ac 1 Module Grey	12	\$10.59
<b>WOMCB6110</b> <i>*Clipsal - MX9MC110 *NHP - MD6M110 †Hager - MSN110</i>	MCB Miniature Circuit Breaker 6kA 1P 10A C Curve 230V 240V ac 1 Module Grey	12	\$10.59
<b>WOMCB6116</b> <i>*Clipsal - MX9MC116 *NHP - MD6M116 †Hager - MSN116</i>	MCB Miniature Circuit Breaker 6kA 1P 16A C Curve 230V 240V ac 1 Module Grey	12	\$10.59
<b>WOMCB6120</b> <i>*Clipsal - MX9MC120 *NHP - MD6M120 †Hager - MSN120</i>	MCB Miniature Circuit Breaker 6kA 1P 20A C Curve 230V 240V ac 1 Module Grey	12	\$10.59
<b>WOMCB6125</b> <i>*Clipsal - MX9MC125 *NHP - MD6M125 †Hager - MSN125</i>	MCB Miniature Circuit Breaker 6kA 1P 25A C Curve 230V 240V ac 1 Module Grey	12	\$10.59
<b>WOMCB6132</b> <i>*Clipsal - MX9MC132 *NHP - MD6M132 †Hager - MSN132</i>	MCB Miniature Circuit Breaker 6kA 1P 32A C Curve 230V 240V ac 1 Module Grey	12	\$10.59
<b>WOMCB6132R</b> <i>Hager - MSN132R</i>	MCB Miniature Circuit Breaker 6kA 1P 32A C Curve 230V 240V ac 1 Module <b>Red Dolly Main Switch</b> Grey	12	\$10.59
<b>WOMCB6140</b> <i>*Clipsal - MX9MC140 *NHP - MD6M140 †Hager - MSN140</i>	MCB Miniature Circuit Breaker 6kA 1P 40A C Curve 230V 240V ac 1 Module Grey	12	\$10.59
<b>WOMCB6140R</b> <i>Hager - MSN140R</i>	MCB Miniature Circuit Breaker 6kA 1P 40A C Curve 230V 240V ac 1 Module <b>Red Dolly Main Switch</b> Grey	12	\$10.59
<b>WOMCB6150</b> <i>*Clipsal - MX9MC150 *NHP - MD6M150 †Hager - MSN150</i>	MCB Miniature Circuit Breaker 6kA 1P 50A C Curve 230V 240V ac 1 Module Grey	12	\$10.59
<b>WOMCB6150R</b>	MCB Miniature Circuit Breaker 6kA 1P 50A C Curve 230V 240V ac 1 Module <b>Red Dolly Main Switch</b> Grey	12	\$10.59
<b>WOMCB6163</b> <i>*Clipsal - MX9MC163 *NHP - MD6M163</i>	MCB Miniature Circuit Breaker 6kA 1P 63A C Curve 230V 240V ac 1 Module Grey	12	\$10.59
<b>WOMCB6163R</b> <i>*Clipsal - MX9MC163R</i>	MCB Miniature Circuit Breaker 6kA 1P 63A C Curve 230V 240V ac 1 Module <b>Red Dolly Main Switch</b> Grey	12	\$10.59



Wolverine MCBs are available in C curve tripping characteristic and ideal for applications for the protection of resistive and inductive loads with low inrush current. Suitable for protecting distribution lines, lighting lines and motor circuits with high connecting currents, equipment in office and residential buildings. **PRODUCT CODES SHOWING "R" (TO INDICATE RED TOGGLE) IN CATALOGUE NUMBER** are configured for MCB/Main Switch applications. Available in 1 pole and 3 pole. Complies with AS/NZS and IEC 60898-1.

Miniature Circuit Breakers (MCB) Series		Qty Per Box	Trade Ex GST
<b>WOMCB6310</b> *Clipsal - MX9MC310 ^NHP - MD6M310 †Hager - MSN310	MCB Miniature Circuit Breaker 6kA 3P 10A C Curve 400V 415V ac 3 Module Grey	4	\$74.42
<b>WOMCB6316</b> *Clipsal - MX9MC316 ^NHP - MD6M316 †Hager - MSN316	MCB Miniature Circuit Breaker 6kA 3P 16A C Curve 400V 415V ac 3 Module Grey	4	\$74.42
<b>WOMCB6320</b> *Clipsal - MX9MC320 ^NHP - MD6M320 †Hager - MSN320	MCB Miniature Circuit Breaker 6kA 3P 20A C Curve 400V 415V ac 3 Module Grey	4	\$74.42
<b>WOMCB6325</b> *Clipsal - MX9MC325 ^NHP - MD6M325 †Hager - MSN325	MCB Miniature Circuit Breaker 6kA 3P 25A C Curve 400V 415V ac 3 Module Grey	4	\$74.42
<b>WOMCB6332</b> *Clipsal - MX9MC332 ^NHP - MD6M332 †Hager - MSN332	MCB Miniature Circuit Breaker 6kA 3P 32A C Curve 400V 415V ac 3 Module Grey	4	\$74.42
<b>WOMCB6332R</b> †Hager - MSN332R	MCB Miniature Circuit Breaker 6kA 3P 32A C Curve 400V 415V ac 3 Module <b>Red Dolly Main Switch</b> Grey	4	\$74.42
<b>WOMCB6340</b> *Clipsal - MX9MC340 ^NHP - MD6M340 †Hager - MSN340	MCB Miniature Circuit Breaker 6kA 3P 40A C Curve 400V 415V ac 3 Module Grey	4	\$74.42
<b>WOMCB6340R</b> †Hager - MSN340R	MCB Miniature Circuit Breaker 6kA 3P 40A C Curve 400V 415V ac 3 Module <b>Red Dolly Main Switch</b> Grey	4	\$74.42
<b>WOMCB6350</b> *Clipsal - MX9MC350 ^NHP - MD6M350 †Hager - MSN350	MCB Miniature Circuit Breaker 6kA 3P 50A C Curve 400V 415V ac 3 Module Grey	4	\$74.42
<b>WOMCB6350R</b>	MCB Miniature Circuit Breaker 6kA 3P 50A C Curve 400V 415V ac 3 Module <b>Red Dolly Main Switch</b> Grey	4	\$74.42
<b>WOMCB6363</b> *Clipsal - MX9MC363 ^NHP - MD6M363 †Hager - MSN363	MCB Miniature Circuit Breaker 6kA 3P 63A C Curve 400V 415V ac 3 Module Grey	4	\$77.50
<b>WOMCB6363R</b> *Clipsal - MX9MC363R ^NHP - MD6M363R †Hager - MSN363R	MCB Miniature Circuit Breaker 6kA 3P 63A C Curve 400V 415V ac 3 Module <b>Red Dolly Main Switch</b> Grey	4	\$77.50



Data Spec  
Sheets



See Trade  
Prices



Web link to  
full range



Wolverine DIN Rail mounted RCBOs (WORCBO series) offer personal and equipment protection applications in domestic and small commercial environments as well as circuit protection up to 10kA.

The Compact SLIM module design, allows for more RCDs/MCBs to be installed in the one enclosure. The range enables true Double Pole Disconnection in a Single Module RCBO. Complies with AS/NZS 61009-1 and IEC 61009-1.

RCBO Series Type A RCBO 4.5kA - 1 Module		Qty Per Box	Trade Ex GST
<b>WORCBO45110</b> <small>*Clipsal - RCBE210/30S</small>	RCBO Residual Current Breaker with Overcurrent Protection 4.5kA 2 Pole 10A 230V 240V ac 30mA Type A 1 Module Wide Grey	10	\$71.76
<b>WORCBO45116</b> <small>*Clipsal - RCBE216/30S</small>	RCBO Residual Current Breaker with Overcurrent Protection 4.5kA 2 Pole 16A 230V 240V ac 30mA Type A 1 Module Wide Grey	10	\$71.76
<b>WORCBO45120</b> <small>*Clipsal - RCBE220/30S</small>	RCBO Residual Current Breaker with Overcurrent Protection 4.5kA 2 Pole 20A 230V 240V ac 30mA Type A 1 Module Wide Grey	10	\$71.76
<b>WORCBO45125</b> <small>*Clipsal - RCBE225/30S</small>	RCBO Residual Current Breaker with Overcurrent Protection 4.5kA 2 Pole 25A 230V 240V ac 30mA Type A 1 Module Wide Grey	10	\$71.76
<b>WORCBO45132</b> <small>*Clipsal - RCBE232/30S</small>	RCBO Residual Current Breaker with Overcurrent Protection 4.5kA 2 Pole 32A 230V 240V ac 30mA Type A 1 Module Wide Grey	10	\$71.76
<b>WORCBO45140</b>	RCBO Residual Current Breaker with Overcurrent Protection 4.5kA 2 Pole 40A 230V 240V ac 30mA Type A 1 Module Wide Grey	10	\$71.76

### RCBO Series Type A RCBO 6kA - 1 Module

<b>WORCBO6106</b> <small>*Clipsal - MX9R3106 *NHP - MD6RD0630A</small>	RCBO Residual Current Breaker with Overcurrent Protection 6kA 2 Pole 6A 230V 240V ac 30mA Type A 1 Module Wide Grey	10	\$82.43
<b>WORCBO6106T</b> <small>*Clipsal - A9D61806 *NHP - MD6RS0630A †Hager - ADC906T</small>	RCBO Residual Current Breaker with Overcurrent Protection 6kA 2 Pole 6A 230V 240V ac 30mA Type A 1 Module Wide with Neutral Tail Grey	6	\$90.31
<b>WORCBO6110</b> <small>*Clipsal - MX9R3110 *NHP - MD6RD1030A</small>	RCBO Residual Current Breaker with Overcurrent Protection 6kA 2 Pole 10A 230V 240V ac 30mA Type A 1 Module Wide Grey	10	\$82.43
<b>WORCBO6110T</b> <small>*Clipsal - A9D61810 *NHP - MD6RS1030A †Hager - ADC910T</small>	RCBO Residual Current Breaker with Overcurrent Protection 6kA 2 Pole 10A 230V 240V ac 30mA Type A 1 Module Wide with Neutral Tail Grey	6	\$90.31
<b>WORCBO6116</b> <small>*Clipsal - MX9R3116 *NHP - MD6RD1630A</small>	RCBO Residual Current Breaker with Overcurrent Protection 6kA 2 Pole 16A 230V 240V ac 30mA Type A 1 Module Wide Grey	10	\$82.43
<b>WORCBO6116T</b> <small>*Clipsal - A9D61816 *NHP - MD6RS1630A †Hager - ADC916T</small>	RCBO Residual Current Breaker with Overcurrent Protection 6kA 2 Pole 16A 230V 240V ac 30mA Type A 1 Module Wide with Neutral Tail Grey	6	\$90.31
<b>WORCBO6120</b> <small>*Clipsal - MX9R3120 *NHP - MD6RD2030A</small>	RCBO Residual Current Breaker with Overcurrent Protection 6kA 2 Pole 20A 230V 240V ac 30mA Type A 1 Module Wide Grey	10	\$82.43
<b>WORCBO6120T</b> <small>*Clipsal - A9D61820 *NHP - MD6RS2030A †Hager - ADC920T</small>	RCBO Residual Current Breaker with Overcurrent Protection 6kA 2 Pole 20A 230V 240V ac 30mA Type A 1 Module Wide with Neutral Tail Grey	6	\$90.31
<b>WORCBO6125</b> <small>*Clipsal - MX9R3125 *NHP - MD6RD2530A</small>	RCBO Residual Current Breaker with Overcurrent Protection 6kA 2 Pole 25A 230V 240V ac 30mA Type A 1 Module Wide Grey	10	\$82.43
<b>WORCBO6125T</b> <small>*Clipsal - A9D61825 *NHP - MD6RS2530A †Hager - ADC925T</small>	RCBO Residual Current Breaker with Overcurrent Protection 6kA 2 Pole 25A 230V 240V ac 30mA Type A 1 Module Wide with Neutral Tail Grey	6	\$90.31



RCBO Series Type A RCBO 6kA - 1 Module		Qty Per Box	Trade Ex GST
<b>WORCBO6132</b> *Clipsal - MX9R3132 *NHP - MD6RD3230A	RCBO Residual Current Breaker with Overcurrent Protection 6kA 2 Pole 32A 230V 240V ac 30mA Type A 1 Module Wide Grey	10	\$82.43
<b>WORCBO6132T</b> *Clipsal - A9D61832 *NHP - MD6RS3230A †Hager - ADC932T	RCBO Residual Current Breaker with Overcurrent Protection 6kA 2 Pole 32A 230V 240V ac 30mA Type A 1 Module Wide with Neutral Tail Grey	6	\$90.31
<b>WORCBO6140</b>	RCBO Residual Current Breaker with Overcurrent Protection 6kA 2 Pole 40A 230V 240V ac 30mA Type A 1 Module Wide Grey	10	\$82.43
<b>WORCBO6140T</b> *Clipsal - A9D61840	RCBO Residual Current Breaker with Overcurrent Protection 6kA 2 Pole 40A 230V 240V ac 30mA Type A 1 Module Wide with Neutral Tail Grey	6	\$90.31

RCBO Series Type A RCBO 6kA - 2 Module			
<b>WORCBO6210</b> *Clipsal - MX9R3210 *NHP - MD6R21030A †Hager - ADA910T	RCBO Residual Current Breaker with Overcurrent Protection 6kA 2 Pole 10A 230 240V ac 30mA Type A 2 Module Wide	6	\$58.00
<b>WORCBO6216</b> *Clipsal - MX9R3216 *NHP - MD6R21630A †Hager - ADA916T	RCBO Residual Current Breaker with Overcurrent Protection 6kA 2 Pole 16A 230 240V ac 30mA Type A 2 Module Wide	6	\$58.00
<b>WORCBO6220</b> *Clipsal - MX9R3220 *NHP - MD6R22030A †Hager - ADA920T	RCBO Residual Current Breaker with Overcurrent Protection 6kA 2 Pole 20A 230 240V ac 30mA Type A 2 Module Wide	6	\$58.00
<b>WORCBO6225</b> *Clipsal - MX9R3225 *NHP - MD6R22530A †Hager - ADA925T	RCBO Residual Current Breaker with Overcurrent Protection 6kA 2 Pole 25A 230 240V ac 30mA Type A 2 Module Wide	6	\$58.00
<b>WORCBO6232</b> *Clipsal - MX9R3232 *NHP - MD6R23230A †Hager - ADA932T	RCBO Residual Current Breaker with Overcurrent Protection 6kA 2 Pole 32A 230 240V ac 30mA Type A 2 Module Wide	6	\$58.00
<b>WORCBO6240</b> *Clipsal - MX9R3240 *NHP - MD6R24030A †Hager - ADA940T	RCBO Residual Current Breaker with Overcurrent Protection 6kA 2 Pole 40A 230 240V ac 30mA Type A 2 Module Wide	6	\$58.00
<b>WORCBO6263</b>	RCBO Residual Current Breaker with Overcurrent Protection 6kA 2 Pole 63A 230 240V ac 30mA Type A 2 Module Wide	6	\$58.00

RCBO Series Type A RCBO 6kA - 4 Module			
<b>WORCBO6410</b> *Clipsal-MX9R3510 *NHP - MD6R41030A †Hager - ADM410T	RCBO Residual Current Breaker with Overcurrent Protection 6kA 4 Pole 10A 400 415V ac 30mA Type A 4 Module Wide Grey	TBC	NEW RELEASE
<b>WORCBO6416</b> *Clipsal-MX9R3516 *NHP - MD6R41630A †Hager - ADM416T	RCBO Residual Current Breaker with Overcurrent Protection 6kA 4 Pole 16A 400 415V ac 30mA Type A 4 Module Wide Grey	TBC	NEW RELEASE
<b>WORCBO6420</b> *Clipsal-MX9R3520 *NHP - MD6R42030A †Hager - ADM420T	RCBO Residual Current Breaker with Overcurrent Protection 6kA 4 Pole 20A 400 415V ac 30mA Type A 4 Module Wide Grey	TBC	NEW RELEASE
<b>WORCBO6425</b> *Clipsal-MX9R3525 *NHP - MD6R42530A †Hager - ADM425T	RCBO Residual Current Breaker with Overcurrent Protection 6kA 4 Pole 25A 400 415V ac 30mA Type A 4 Module Wide Grey	TBC	NEW RELEASE
<b>WORCBO6432</b> *Clipsal-MX9R3532 *NHP - MD6R43230A †Hager - ADM432T	RCBO Residual Current Breaker with Overcurrent Protection 6kA 4 Pole 32A 400 415V ac 30mA Type A 4 Module Wide Grey	TBC	NEW RELEASE
<b>WORCBO6440</b> *Clipsal-MX9R3540 †Hager - ADM440T	RCBO Residual Current Breaker with Overcurrent Protection 6kA 4 Pole 40A 400 415V ac 30mA Type A 4 Module Wide Grey	TBC	NEW RELEASE



Data Spec  
Sheets



See Trade  
Prices



Web link to  
full range



RCBO Series Type A RCBO 6kA - 3 Module		Qty Per Box	Trade Ex GST
WORCBO6310T	RCBO Residual Current Breaker with Overcurrent Protection 6kA 4 Pole 10A 400V 415V ac 30mA Type A 3 Module Wide Long Body with Neutral Tail Grey	TBC	NEW RELEASE
WORCBO6316T	RCBO Residual Current Breaker with Overcurrent Protection 6kA 4 Pole 16A 400V 415V ac 30mA Type A 3 Module Wide Long Body with Neutral Tail Grey	TBC	NEW RELEASE
WORCBO6320T	RCBO Residual Current Breaker with Overcurrent Protection 6kA 4 Pole 20A 400V 415V ac 30mA Type A 3 Module Wide Long Body with Neutral Tail Grey	TBC	NEW RELEASE
WORCBO6325T	RCBO Residual Current Breaker with Overcurrent Protection 6kA 4 Pole 25A 400V 415V ac 30mA Type A 3 Module Wide Long Body with Neutral Tail Grey	TBC	NEW RELEASE
WORCBO6332T	RCBO Residual Current Breaker with Overcurrent Protection 6kA 4 Pole 32A 400V 415V ac 30mA Type A 3 Module Wide Long Body with Neutral Tail Grey	TBC	NEW RELEASE
WORCBO6340T	RCBO Residual Current Breaker with Overcurrent Protection 6kA 4 Pole 40A 400V 415V ac 30mA Type A 3 Module Wide Long Body with Neutral Tail Grey	TBC	NEW RELEASE
WORCBO6350T	RCBO Residual Current Breaker with Overcurrent Protection 6kA 4 Pole 50A 400V 415V ac 30mA Type A 3 Module Wide Long Body with Neutral Tail Grey	TBC	NEW RELEASE
WORCBO6363T	RCBO Residual Current Breaker with Overcurrent Protection 6kA 4 Pole 63A 400V 415V ac 30mA Type A 3 Module Wide Long Body with Neutral Tail Grey	TBC	NEW RELEASE

RCBO Series Type A RCBO 10kA - 1 Module		Qty Per Box	Trade Ex GST
WORCBO10106T	RCBO Residual Current Breaker with Overcurrent Protection 10kA 2 Pole 6A 230 240V ac 30mA Type A 1 Module Wide Long Body with Neutral Tail Functional Earth Option Grey	TBC	NEW RELEASE
WORCBO10110T <small>**Clipsal - A9D11810 *NHP - DTRL1030A †Hager - ADC210B</small>	RCBO Residual Current Breaker with Overcurrent Protection 10kA 2 Pole 10A 230 240V ac 30mA Type A 1 Module Wide Long Body with Neutral Tail Functional Earth Option Grey	TBC	NEW RELEASE
WORCBO10116T <small>*Clipsal - A9D11816 *NHP - DTRL1630A †Hager - ADC216B</small>	RCBO Residual Current Breaker with Overcurrent Protection 10kA 2 Pole 16A 230 240V ac 30mA Type A 1 Module Wide Long Body with Neutral Tail Functional Earth Option Grey	TBC	NEW RELEASE
WORCBO10120T <small>**Clipsal - A9D11820 *NHP - DTRL2030A †Hager - ADC220B</small>	RCBO Residual Current Breaker with Overcurrent Protection 10kA 2 Pole 20A 230 240V ac 30mA Type A 1 Module Wide Long Body with Neutral Tail Functional Earth Option Grey	TBC	NEW RELEASE
WORCBO10125T <small>*Clipsal - A9D11825 *NHP - DTRL2530A †Hager - ADC225B</small>	RCBO Residual Current Breaker with Overcurrent Protection 10kA 2 Pole 25A 230 240V ac 30mA Type A 1 Module Wide Long Body with Neutral Tail Functional Earth Option Grey	TBC	NEW RELEASE
WORCBO10132T <small>*Clipsal - A9D11832 *NHP - DTRL3230A †Hager - ADC232B</small>	RCBO Residual Current Breaker with Overcurrent Protection 10kA 2 Pole 32A 230 240V ac 30mA Type A 1 Module Wide Long Body with Neutral Tail Functional Earth Option Grey	TBC	NEW RELEASE
WORCBO10140T <small>*Clipsal - A9D11840 *NHP - DTRL4030A †Hager - ADC240B</small>	RCBO Residual Current Breaker with Overcurrent Protection 10kA 2 Pole 40A 230 240V ac 30mA Type A 1 Module Wide Long Body with Neutral Tail Functional Earth Option Grey	TBC	NEW RELEASE
WORCBO10150T	RCBO Residual Current Breaker with Overcurrent Protection 10kA 2 Pole 50A 230 240V ac 30mA Type A 1 Module Wide Long Body with Neutral Tail Functional Earth Option Grey	TBC	NEW RELEASE



Arc Fault Detection RCBO 10kA - 2 Module		Qty Per Box	Trade Ex GST
<b>WOAFDRCBO10210</b> <i>*Clipsal - A9D11210</i> <i>†Hager - ADA910T</i>	AFDRCBO Arc Fault Detection Residual Current Breaker with Overcurrent Protection 10kA 2 Pole 10A 230 240V ac 30mA Type A 2 Module Wide	6	\$211.90
<b>WOAFDRCBO10216</b> <i>*Clipsal - A9D11216</i> <i>†Hager - ADA916T</i>	AFDRCBO Arc Fault Detection Residual Current Breaker with Overcurrent Protection 10kA 2 Pole 16A 230 240V ac 30mA Type A 2 Module Wide	6	\$211.90
<b>WOAFDRCBO10220</b> <i>*Clipsal - A9D11220</i> <i>†Hager - ADA920T</i>	AFDRCBO Arc Fault Detection Residual Current Breaker with Overcurrent Protection 10kA 2 Pole 20A 230 240V ac 30mA Type A 2 Module Wide	6	\$211.90
<b>WOAFDRCBO10225</b> <i>*Clipsal - A9D11225</i> <i>†Hager - ADA925T</i>	AFDRCBO Arc Fault Detection Residual Current Breaker with Overcurrent Protection 10kA 2 Pole 25A 230 240V ac 30mA Type A 2 Module Wide	6	\$211.90

### RCBO Series Type A RCBO 10kA - 3 Module

<b>WORCBO10310T</b> <i>*Clipsal - A9DC1910</i> <i>^NHP - DTRTNN1030A</i> <i>†Hager - ADX410T</i>	RCBO Residual Current Breaker with Overcurrent Protection 10kA 4 Pole 10A 400V 415V ac 30mA Type A 3 Module Wide Long Body with Neutral Tail Grey	TBC	NEW RELEASE
<b>WORCBO10316T</b> <i>*Clipsal - A9DC1916</i> <i>^NHP - DTRTNN1630A</i> <i>†Hager - ADX416T</i>	RCBO Residual Current Breaker with Overcurrent Protection 10kA 4 Pole 16A 400V 415V ac 30mA Type A 3 Module Wide Long Body with Neutral Tail Grey	TBC	NEW RELEASE
<b>WORCBO10320T</b> <i>*Clipsal - A9DC1920</i> <i>†Hager - ADX420T</i>	RCBO Residual Current Breaker with Overcurrent Protection 10kA 4 Pole 20A 400V 415V ac 30mA Type A 3 Module Wide Long Body with Neutral Tail Grey	TBC	NEW RELEASE
<b>WORCBO10325T</b> <i>*Clipsal - A9DC1925</i> <i>†Hager - ADX425T</i>	RCBO Residual Current Breaker with Overcurrent Protection 10kA 4 Pole 25A 400V 415V ac 30mA Type A 3 Module Wide Long Body with Neutral Tail Grey	TBC	NEW RELEASE
<b>WORCBO10332T</b> <i>*Clipsal - A9DC1932</i> <i>†Hager - ADX432T</i>	RCBO Residual Current Breaker with Overcurrent Protection 10kA 4 Pole 32A 400V 415V ac 30mA Type A 3 Module Wide Long Body with Neutral Tail Grey	TBC	NEW RELEASE
<b>WORCBO10340T</b> <i>*Clipsal - A9DC1940</i> <i>†Hager - ADX440T</i>	RCBO Residual Current Breaker with Overcurrent Protection 10kA 4 Pole 40A 400V 415V ac 30mA Type A 3 Module Wide Long Body with Neutral Tail Grey	TBC	NEW RELEASE
<b>WORCBO10350T</b> <i>*Clipsal - A9DC1950</i> <i>^NHP - DTRTNN5030A</i>	RCBO Residual Current Breaker with Overcurrent Protection 10kA 4 Pole 50A 400V 415V ac 30mA Type A 3 Module Wide Long Body with Neutral Tail Grey	TBC	NEW RELEASE
<b>WORCBO10363T</b> <i>^NHP - DTRTNN6330A</i>	RCBO Residual Current Breaker with Overcurrent Protection 10kA 4 Pole 63A 400V 415V ac 30mA Type A 3 Module Wide Long Body with Neutral Tail Grey	TBC	NEW RELEASE

### RCBO Series Type A RCBO 10kA - 4 Module

<b>WORCBO10410</b>	RCBO Residual Current Breaker with Overcurrent Protection 10kA 4 Pole 10A 400V 415V ac 30mA Type A 4 Module Wide Grey	TBC	NEW RELEASE
<b>WORCBO10416</b>	RCBO Residual Current Breaker with Overcurrent Protection 10kA 4 Pole 16A 400V 415V ac 30mA Type A 4 Module Wide Grey	TBC	NEW RELEASE
<b>WORCBO10420</b>	RCBO Residual Current Breaker with Overcurrent Protection 10kA 4 Pole 20A 400V 415V ac 30mA Type A 4 Module Wide Grey	TBC	NEW RELEASE
<b>WORCBO10425</b>	RCBO Residual Current Breaker with Overcurrent Protection 10kA 4 Pole 25A 400V 415V ac 30mA Type A 4 Module Wide Grey	TBC	NEW RELEASE
<b>WORCBO10432</b>	RCBO Residual Current Breaker with Overcurrent Protection 10kA 4 Pole 32A 400V 415V ac 30mA Type A 4 Module Wide Grey	TBC	NEW RELEASE
<b>WORCBO10440</b>	RCBO Residual Current Breaker with Overcurrent Protection 10kA 4 Pole 40A 400V 415V ac 30mA Type A 4 Module Wide Grey	TBC	NEW RELEASE



Data Spec  
Sheets



See Trade  
Prices



Web link to  
full range

## MAIN SWITCH, CHANGEOVER SWITCH AND RESIDUAL CURRENT DEVICES

Wolverine DIN Rail mounted Main Switch Isolators (WOMSW Series) are suited to board configurations up to 100A. Red switch toggles enable easy identification along with the green/red indication of internal contact positions. Ideal for applications where isolation is required either in the main or in local sub boards. Please note: WOMSW are only switches and do not operate to provide additional circuit protection.



Main Switch Series		Qty Per Box	Trade Ex GST
<b>WOMSW180</b> *NHP - MD6MS180 †Hager - SBR180	Main Switch 1 Pole 80A 230V 240V ac 1 Module Grey	12	\$18.46
<b>WOMSW1100</b> *Clipsal - MX9MS1100 *NHP - MD6MS1100 †Hager - SBR190	Main Switch 1 Pole 100A 230V 240V ac 1 Module Grey	12	\$23.62
<b>WOMSW2100</b> *Clipsal - MX9MS2100 *NHP - MD6MS2100 †Hager - SBR290	Main Switch 2 Pole 100A 400V 415V ac 2 Module Grey	6	\$41.11
<b>WOMSW380</b>	Main Switch 3 Pole 80A 400V 415V ac 3 Module Grey	4	\$75.84
<b>WOMSW3100</b> *Clipsal - MX9MS3100 *NHP - MD6MS3100	Main Switch 3 Pole 100A 400V 415V ac 3 Module Grey	4	\$78.70

Changeover switches for use with alternative or stand-by generators typically mounted in main switch boards with the switch actuator positioned in the centre off position. The incoming changeover must be protected with an appropriate MCB 63A - 6kA - C curve to protect against short circuit and disconnection. Refer to AS/NZS 3000 (wiring rules), AS/NZS 3010 (Electrical installations - Generating sets) and local Service and Installation Rules for specific requirements.



### Switch Changeover

<b>WOSWCO163</b>	Switch Changeover Din Mount 1 Pole 63A 240 415V ac AC22A	6	\$154.87
<b>WOSWCO263</b> *Clipsal - A9SCO263 †Hager - SF263	Switch Changeover Din Mount 2 Pole 63A 240 415V ac AC22A	6	\$154.87
<b>WOSWCO463</b> *Clipsal - A9SCO463 †Hager - SF463	Switch Changeover Din Mount 4 Pole 63A 400 415V ac AC22A	3	\$413.30

Wolverine DIN Rail mounted RCDs (WORCD Series) ensures both personal and equipment protection in domestic and small commercial environments. Installation features include easy-to-use terminals, DIN rail assembly and U-style busbar suitability. Type A sensing is ideal for general everyday protection and available in 30mA operating current. Sensitive to both sinusoidal and unidirectional pulsed currents which may be present in modern electrical systems with electronic devices. Complies with AS/NZS and IEC 61008-1.



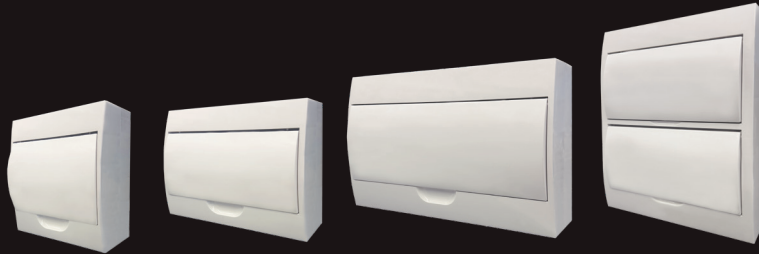
### RCD Series Type A

<b>WORCD6220</b>	RCD Residual Current Device 6kA 2 Pole 20 Amp 230V 240V ac 30mA Type A 2 Module Grey	6	\$80.63
<b>WORCD6240</b> *Clipsal - MX9RC240 *NHP - MD6RC24030A †Hager - CDA240T	RCD Residual Current Device 6kA 2 Pole 40 Amp 230 240V ac 30mA Type A 2 Module Grey	6	\$80.63
<b>WORCD6263</b> *Clipsal - MX9RC263 *NHP - MD6RC26330A †Hager - CDA263T	RCD Residual Current Device 6kA 2 Pole 63 Amp 230 240V ac 30mA Type A 2 Module Grey	6	\$80.63
<b>WORCD6420</b>	RCD Residual Current Device 6kA 4 Pole 20 Amp 400V 415V ac 30mA Type A 4 Module Grey	3	\$87.30
<b>WORCD6440</b> *Clipsal - MX9RC440 *NHP - MD6RC44030A †Hager - CDA440T	RCD Residual Current Device 6kA 4 Pole 40 Amp 400 415V ac 30mA Type A 4 Module Grey	3	\$87.30
<b>WORCD6463</b> *Clipsal - MX9RC463 *NHP - MD6RC46330A †Hager - CDA463T	RCD Residual Current Device 6kA 4 Pole 63 Amp 400 415V ac 30mA Type A 4 Module Grey	3	\$87.30



### Surge Protection Devices

		Qty Per Box	Trade Ex GST
<b>WOSPD140</b> <i>*Clipsal - MX9SP140</i>	SPD Surge Protection Device 1 Pole 40kA 275V ac	10	\$117.74
<b>WOSPD140C</b> <i>*Clipsal - MX9SP40C</i>	SPD Surge Protection Device 1 Pole 40kA 275V ac Replacement Cartridge Only	10	\$90.31



### Surface Mount INDOOR Switchboard Series

<b>WOSB8</b> <i>*Clipsal - MX9E1106S ^NHP - CSB08ST/SW †Hager - VS108PT/TT</i>	Main Switch 1 Pole 80A 230V 240V ac 1 Module Grey	12	\$18.46
<b>WOSB12</b> <i>*Clipsal - MX9E1111S ^NHP - CSB12SW †Hager - VF112PT</i>	Switchboard Surface Mount 12 Way 100A 415V ac IP40 with White Door for Indoor Use	1	\$68.58
<b>WOSB18</b> <i>*Clipsal - MX9E1117S ^NHP - CSB18ST/SW †Hager - VS118PT/TT</i>	Switchboard Surface Mount 18 Way 100A 415V ac IP40 with White Door for Indoor Use	1	\$89.68
<b>WOSB24</b> <i>*Clipsal - MX9E1212S ^NHP - CSB24SW †Hager - VS212TT/PT</i>	Switchboard Surface Mount 24 Way 100A 415V ac IP40 with White Door for Indoor Use	1	\$116.05
<b>WOSBSP</b> <i>*Clipsal - MX9ELG</i>	Switchboard Circuit ID Sticker Pack Red and Green	50	\$3.92



### Pole Cover and Filler Series

<b>WOPC1G</b> <i>**Clipsal - 4CC1-WE ^NHP - CSPC1 †Hager - VD101NT</i>	Pole Cover 1 Way Surface Mount Indoor Use IP2X	5	\$9.18
<b>WOPC2G</b> <i>*Clipsal - 4CC2-WE ^NHP - CSPC2 †Hager - VD102NT</i>	Pole Cover 2 Way Surface Mount Indoor Use IP2X	5	\$11.38
<b>WOPC4G</b> <i>*Clipsal - 4CC4-WE ^NHP - CSPC4 †Hager - VD104NT</i>	Pole Cover 4 Way Surface Mount Indoor Use IP2X	1	\$15.30
<b>WOPF6</b> <i>**Clipsal - MX9EF8 ^NHP - DTPF12 †Hager - JP011</i>	Switchboard Pole Fillers 6 Modules	10	\$6.80



Data Spec  
Sheets



See Trade  
Prices



Web link to  
full range

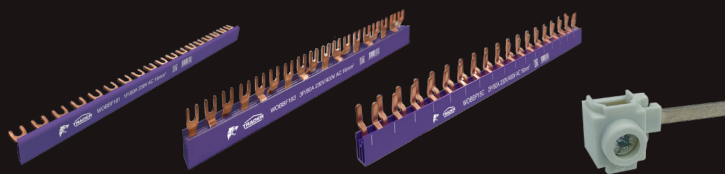


Surface Mount <b>OUTDOOR</b> Switchboard Series		Qty Per Box	Trade Ex GST
WOSBWP6	Switchboard Surface Mount Weatherproof 6 way 100A 415V IP66 With Grey Transparent Door Outdoor Use	1	NEW RELEASE
WOSBWP9	Switchboard Surface Mount Weatherproof 9 Way 100A 415V ac IP65 with Transparent Grey Door for Outdoor Use	1	\$112.46
WOSBWP12 <small>*NHP - NWP12 HPM/LEGRAND - 601981</small>	Switchboard Surface Mount Weatherproof 12 Way 100A 415V ac IP65 with Transparent Grey Door for Outdoor Use	1	\$158.25
WOSBWP18 <small>HPM/LEGRAND - 601985</small>	Switchboard Surface Mount Weatherproof 18 Way 100A 415V ac IP65 with Transparent Grey Door for Outdoor Use	1	\$199.40
WOSBWP24 <small>*NHP - NWP24 HPM/LEGRAND - 601982</small>	Switchboard Surface Mount Weatherproof 24 Way 100A 415V ac IP65 with Transparent Grey Door for Outdoor Use	1	\$221.55



### Surface Mount **METAL** Switchboards

WOSBWPM5	Switchboard Surface Mount Weatherproof Metal 5 Way 100A 415V ac IP65 Grey	TBC	NEW RELEASE
WOSBWPM10	Switchboard Surface Mount Weatherproof Metal 10 Way 100A 415V ac IP65 Grey	TBC	NEW RELEASE



### Insulated Busbars and Busbar Accessories

WOBBF41	Busbar Insulated Fork 80 Amp 1 Pole 4 Module Purple	TBC	NEW RELEASE
WOBBF63	Busbar Insulated Fork 80 Amp 3 Pole 6 Module Purple	TBC	NEW RELEASE
WOBBF164	Busbar Insulated Fork 80 Amp 4 Pole 16 Module Purple	TBC	NEW RELEASE
WOBBF181 <small>*Clipsal - RMXPH124 †Hager - KDN180G *NHP - ICL181F</small>	Busbar Insulated Fork 80A 1 Pole 18 Module Purple	35	\$33.76
WOBBF181EC <small>*Clipsal - RMXPE110 †Hager - KZN021 *NHP - ICLEC23</small>	Busbar End Cap 1 Pole	TBC	NEW RELEASE
WOBBP18C <small>*Clipsal - MX9B124P *NHP - IBD218P</small>	Busbar Insulated Pin 80A 2 Pole 18 Module Combo Active Plus Neutral Purple	15	\$23.21
WOBBF182	Busbar Insulated Fork 80 Amp 2 Pole 18 Module Purple	TBC	NEW RELEASE



Insulated Busbars and Busbar Accessories		Qty Per Box	Trade Ex GST
<b>WOBBF183</b> <i>*Clipsal - RMXPH324</i> <i>†Hager - KON380G</i> <i>^NHP - JBDEC2</i>	Busbar Insulated Fork 80A 3 Pole 18 Module Purple	15	\$35.87
<b>WOBBF183EC</b> <i>*Clipsal - RMXPE310</i> <i>†Hager - KZN023</i>	Busbar End Cap 3 Pole	TBC	NEW RELEASE
<b>WOBBP18CEC</b> <i>HPM/LEGRAND - 601985</i>	Busbar End Cap 3 Pole	TBC	NEW RELEASE
<b>WOBBC2532</b> <i>*Clipsal - RMXPC1</i> <i>†Hager - KF81A</i>	Busbar Connector 25mm2 32 mm Tongue	TBC	NEW RELEASE
<b>WOBBCOV</b> <i>*Clipsal - RMXPT120</i> <i>^NHP - NCBBC</i>	Busbar Protective Fork Cover	TBC	NEW RELEASE



### Neutral Bar

<b>WONBPM7</b> <i>*Clipsal - L7</i>	Neutral Bar Panel Mount 7 Hole with Insulating Cover Transparent Grey	10	\$37.36
--	---	----	---------



### Auto-Switched Sockets

<b>WOSOAUDP10</b> <i>*Clipsal - 4PSO10D</i> <i>†Hager - SNO10DA</i>	Socket DIN Rail Mounted Auto Switched Double Pole 10A 250V 3 Flat Pin Grey	5	\$31.23
<b>WOSOAUDP15</b> <i>*Clipsal - 4PSO15D</i> <i>†Hager - SNO15DA</i>	Socket DIN Rail Mounted Auto Switched Double Pole 15A 250V 3 Flat Pin Grey	5	\$39.46



### Contactor Series

<b>WOCON225NO</b> <i>*Clipsal - A9C20732</i> <i>Legrand - 412523</i> <i>†Hager - ESC225</i>	Contactor 25A 250V ac 2 Pole 230V ac Coil 1 Module Wide 2 Normally Open	12	\$80.00
<b>WOCON240NO</b> <i>*Clipsal - A9C20842</i> <i>Legrand - 412544</i> <i>†Hager - ESC240</i>	Contactor 40A 250V ac 2 Pole 230V ac Coil 2 Module Wide 2 Normally Open	6	\$160.00
<b>WOCON425NO</b> <i>*Clipsal - A9C20834</i> <i>†Hager - ESC425</i>	Contactor 25A 400V ac 4 Pole 230V ac Coil 2 Module Wide 4 Normally Open	6	\$110.00
<b>WOCON440NO</b> <i>*Clipsal - A9C20844</i> <i>Legrand - 412553</i> <i>†Hager - ESC440</i>	Contactor 40A 400V ac 4 Pole 230V ac Coil 3 Module Wide 4 Normally Open	4	\$200.00
<b>WOCON463NO</b> <i>*Clipsal - A9C20864</i> <i>Legrand - 412556</i> <i>†Hager - ESC463</i>	Contactor 63A 400V ac 4 Pole 230V ac Coil 3 Module Wide 4 Normally Open	4	\$344.00