

**PUPP1GVP
PUPP151GVP
PUPP201GVP**

*See current catalogue for further detail

Cleaning Guide:

Spraying cleaning products directly on to electrical switches or power points (sockets) is not recommended.

It is important to ensure that switches are turned off before cleaning.

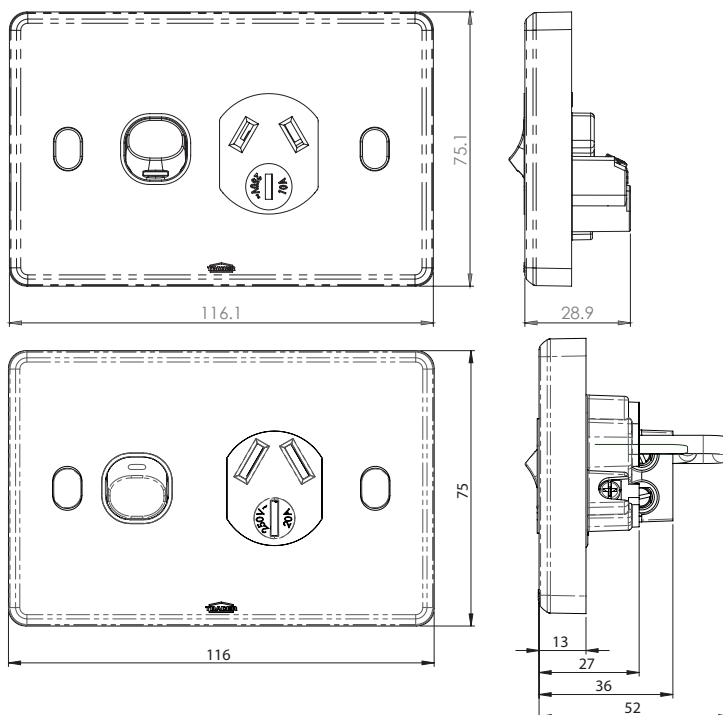
Do not use any cleaning sprays - only wipe down with damp cloth or rub with dry cloth. Do not use an abrasive cloth as it may scratch the plastic.

Do not use harsh chemical cleaners as these can break down the plastic and cause it to crack.

Do not wash the cover plates in water over 60°C.

Puma Vandal Proof Range of Single Power Points

- Power points approved to AS/NZS3112
- Power points have Shutters and are Double Pole
- Oval screw caps for extra adjustment on wall (no removable cover)
- Uses brass tunnel terminals that have the screws backed out for easier installation of cabling. Power point terminals have 5.7mm bore to suit 4 x 2.5mm² cable
- Fits standard Australian wall boxes and mounting accessories that use 84mm mounting centres
- Plates and dollies are made from UV stabilised polycarbonate to avoid discolouring to yellow
- Shutter operates from either earth or neutral
- PUPP1GVP Impact rating IK09 to IEC62262:2002.
- Standard colour is white. Black also stocked - please check availability.
- Typical example of size seen below:



Catalogue Number	Description
PUPP1GVP	Power Point Switched 1 Gang, 10A 250V~ Shuttered, Double Pole, VANDAL PROOF
PUPP151GVP	Power Point Switched 1 Gang, 15A 250V~ Shuttered, Double Pole, VANDAL PROOF
PUPP201GVP	Power Point Switched, 1 Gang, 20A 250V~ Shuttered, Double Pole VANDAL PROOF

When ordering BLACK product add "BK" at end of catalogue number, ie PUPP1GVPBK

Certification Number: GMA-506913-EA

PUPP201GVP: GMA-511870-EA

GSM Electrical (Australia) Pty Ltd

Level 2, 142-144 Fullarton Road, Rose Park SA 5067

P: 1300 301 838 F: 1300 301 778 E: service@gsme.com.au

www.gsme.com.au



Data Specification Sheet
January 2025