

Residential
SA



Living smart at Lakeside Case Study





Case Study:
Lakeside Resort Residence
 New Home:
Goolwa SA
 Electrical Contractor:
Southern Sparks
 Trader Electrical Products used:
Powermesh Connected Home Products..
 To find out more about Powermesh:
www.gsme.com.au/zimi-life

Lakeside Resort, located in the beautiful coastal town of Goolwa, SA is not your typical over 50's lifestyle village. It's immaculate, contemporary and full of homes teeming with the latest designs and technology including this meticulous brand new double storey home full of Powermesh. It also presented some interesting challenges which Powermesh was more than equal to.

When it came to choosing a connected home solution for this home, the client, a former IT professional knew exactly what she wanted, Powermesh. What appealed to her was Powermesh's ability to create schedules, timers and to integrate voice control commands. In addition, controlling the home remotely was also a prerequisite.

The owner regularly has her grandchildren staying over and at night wanted the use of indoor sensors located in the hallway to create lighting to the bathroom. However, these needed to have a manual override to be able to leave the light on indefinitely.

After consultation with the Powermesh engineering team, a simple solution was easily achieved simply by using one switch wired to a PIR sensor and then wiring a bypass to the second button to act as the manual override. In normal auto sensor operation, button 1 is left on. To override the sensor and switch the light continually on, button 2 is pressed.



Manual override created in the downstairs hallway using 2 buttons.



Powermesh DGPO LED flashes green when high energy appliances are in use.

Although electrical contractors, Southern Sparks were new to Powemersh, they were easily able to follow these instructions. In other areas, 2 way switching was required and this was achieved via the Zimi app. No traditional strapper cable was required. A total of 11 Powemesh devices were installed throughout the home. Each device was paired up via Apple iPhone, a straightforward process.

Powemesh with the addition of a Zimi Cloud is so designed that it can either be controlled via the Zimi app or via the Google Home App. In using the Google Home App, the client actively uses Google routines throughout the home to create goodnight scenes.

A coffee station is located within the kitchen, and here a Powemesh power point is set to a schedule so that the automatic coffee machine is automatically turned on in the morning but then never left on indefinitely. A unique energy monitoring feature of the power point is that the Bluetooth indicator flashes green to indicate that a high energy appliance in use. Real time energy consumption can also be seen on the Zimi app.

Connected living technology such as Powemesh, can add significant added value to a home and deliver an enhanced lifestyle. The technology is proven and is installer friendly. Every home can benefit with Powemesh.



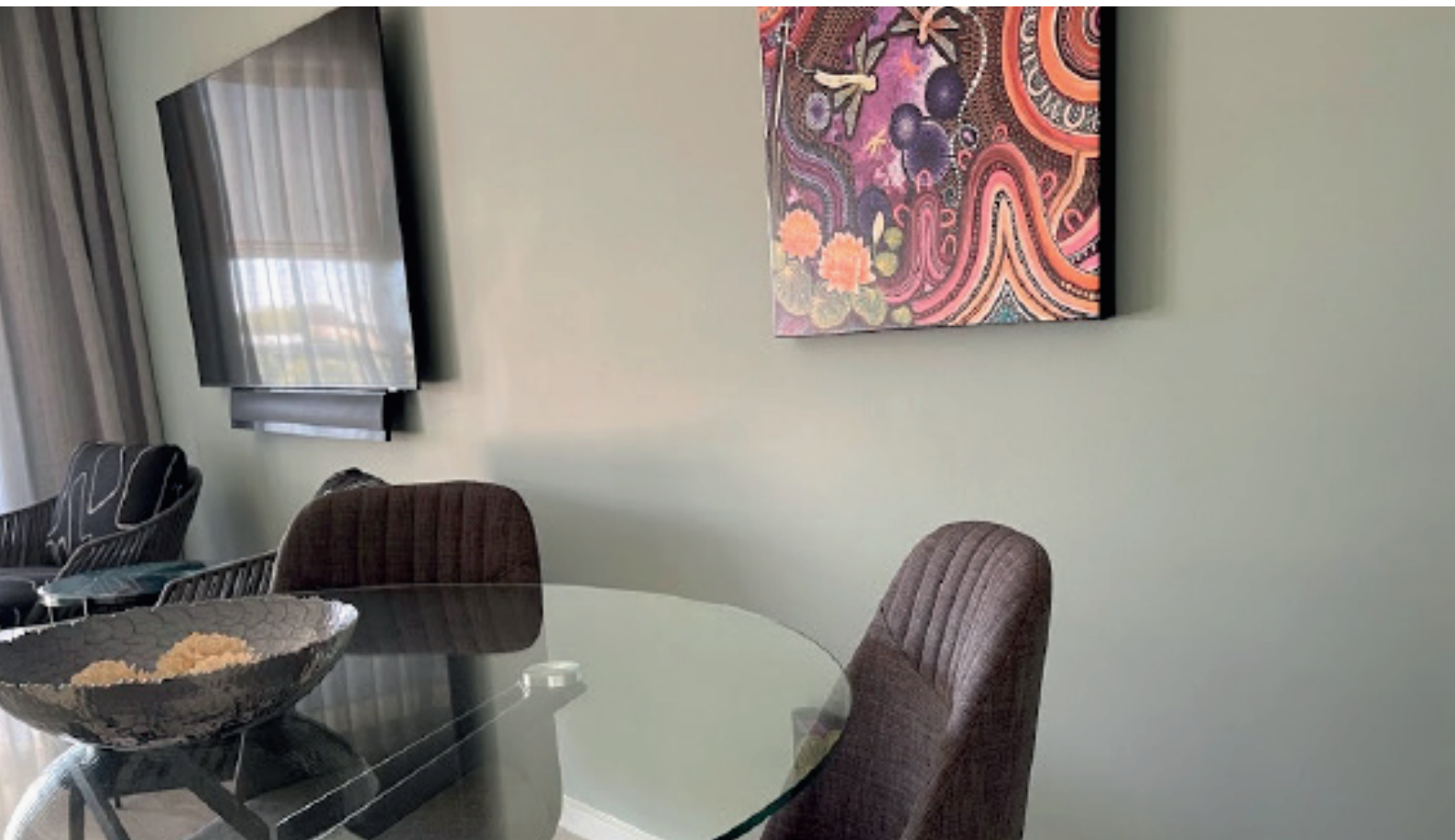
Lakeside Resort full of homes teeming with the latest designs and technology.



Two way switching created in the lounge, kitchen and stairway areas via Behaviour Link.

Powemesh Connected Home Products





Partner with Trader on your next build

If you would like more information on Powermesh products
or to discuss how Trader can partner with you on your next project, please contact us.

Visit: gsme.com.au

Email: service@gsme.com.au

Call: 1300 301 838

For Major Projects:

Pippa Hemmings

Director, Major Partners and Projects

Pippa.hemmings@gsme.com.au

M 0451 028 484 | T (08) 8122 2382

