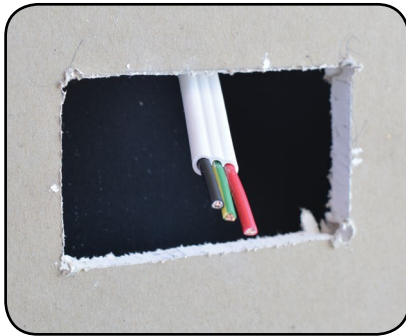


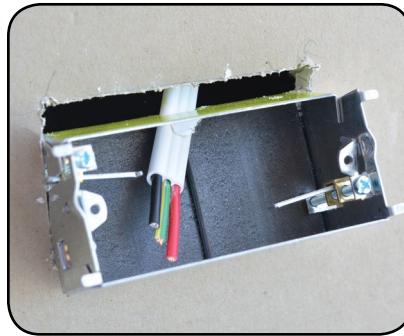
HY1GFRWB Hyena Fire Rated Wall Box



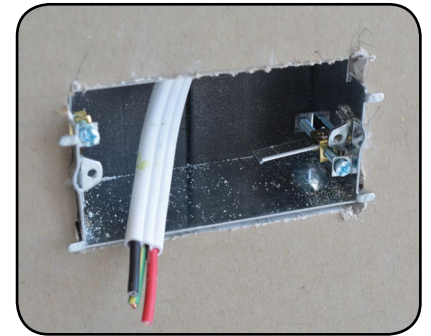
Manufacturer's Installation Instructions for Mounting Requirements



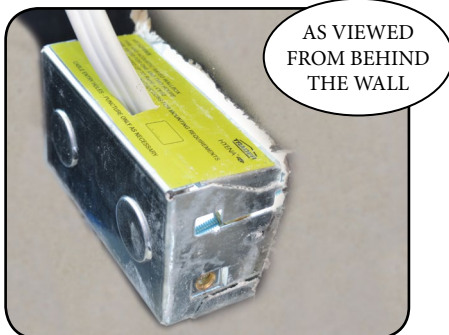
1. Trace around the rear of the wall box against the wall and cut out the aperture to fit the box. Ensure to cut cleanly so that the box is a neat fit.



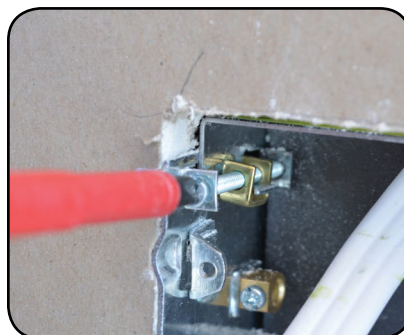
2. Place cables through the relevant cut out feature, trying to keep others sealed and insert the box through the opening, squeezing if necessary.



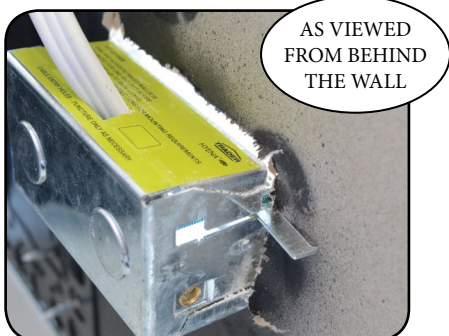
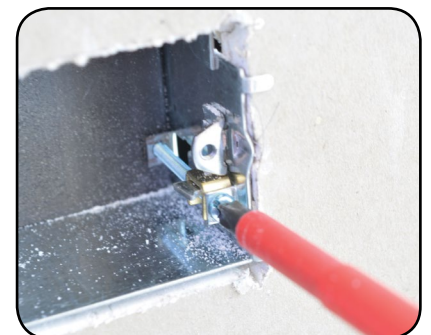
3. Once assembled through the aperture spread the flap outwards.



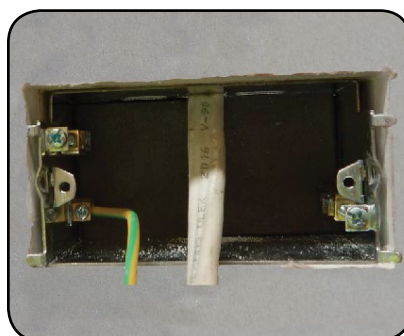
4. Ensure the box fills the aperture and is pushed back on the tags correctly.



- 5a. Push the locking tabs outward, ensuring the screw assembly is aligned and fasten until the tabs lock the box into the plasterboard.



- 5b. Tabs shown in final mounting position.



6. Box has been tested and is capable of withstanding FRL-/120/120 **without** fire rated mastic (EWFA Report No. 47083900.01). Ensure intumescent foam pads supplied are correctly positioned at rear of box to enable fire rating to be achieved.



7. In order for wall box to achieve acoustic rating, ensure that supplied gasket is neatly sandwiched between wall plate and plasterboard during fastening of 84mm mounting screws.