

**MESWC**  
**MESWCFAN**  
**MESWCHEAT**  
**MESWCLIGHT**  
**MESW32C**  
**MESW32COVEN**  
**MESW32CHOB**  
**MESWCI**  
**MESWCDP**  
**MESWCBPR**  
**MESWC3\***

MESWC (Cat's Eye) switch mechanism are used in conjunction with Snow Leopard, Clouded Leopard, Leopard and Cheetah switch plates

Note: MESW switch mechanism are used in conjunction with Flat Cat, Puma and Cougar switch plates.

\*Multiple print options available - see catalogue or website for further detail.

**Cleaning Guide:**

Spraying cleaning products on to electrical products is not recommended.

It is important to ensure that switches are turned off before cleaning.

Do not use any cleaning sprays - only wipe down with damp cloth or rub with dry cloth. (Do not use an abrasive cloth as it may scratch the plastic).

Do not use harsh chemical cleaners as these can break down the plastic and cause it to crack.



## Meerkat Range of Switch Mechanisms

*For use in conjunction with SNOW LEOPARD, CLOUDED LEOPARD and LEOPARD*

- MESWC (was LESWM) - approved to AS/NZS60669-1.
- MESW32C (was LESW32M) and MESW32COVEN (was LESWOV32M) approved to AS/NZS3133.
- Designed to clip into Snow Leopard, Clouded Leopard and Leopard switch plates, also fits all Trader Ranges and many others.
- Uses brass tunnel terminal that have the screws backed out for easier installation of cabling. Switches are single pole two way with looping terminal and suit 4 x 1.5mm<sup>2</sup> cables with 4.1mm bore.
- Slotted head terminal screws, and backed out for easy installation.
- Cat's Eye dolly styling.
- Covers, plates and dollies are made from UV stabilised polycarbonate to avoid discolouring to yellow.
- Please check availability.



Catalogue Number	Description
MESWC	Switch Mechanism 16AX/20A 250V~ Cat's Eye
MESWCFAN	Switch Mechanism 16AX/20A 250V~ Cat's Eye (Labelled Fan)
MESWCHEAT	Switch Mechanism 16AX/20A 250V~ Cat's Eye (Labelled Heat)
MESWCLIGHT	Switch Mechanism 16AX/20A 250V~ Cat's Eye (Labelled Light)
MESW32C	Switch Mechanism 32A 250V~ Cat's Eye
MESW32COVEN	Switch Mechanism 32A 250V~ Cat's Eye (Labelled Oven)
MESW32CHOB	Switch Mechanism 32A 250V~ Cat's Eye (Labelled Hob)
MESWCI	Intermediate Switch Mechanism 10AX 250V~ Cat's Eye
MESWCDP	Double Pole Switch Mechanism 10AX 250V~ Cat's Eye
MESWCBPR	Switch Mechanism Bell Press Return 10AX/16A 250V Cats Eye
MESWC3	Switch Mechanism 3-Position 10AX/16A 250V~ Cat's Eye

- For colours and finishes see Meerkat Rocker Matrix on following pages.
- Colours available: White (Standard), Black (BK), Matt White (MW), Matt Black (MBK) and Silver (SV). Check for availability.

**The MEERKAT Switch Mechanism (MESWC) was previously (LESWM) and is universal to all Snow Leopard, Clouded Leopard, Leopard and Cheetah switch plates.**

SNOW LEOPARD  CLOUDED LEOPARD  LEOPARD 

**Certification Number:** MESWC: GMA-103194-EA-011 / MESW32C: GMA-508325 / GMA-501682 / GMA-507879-EA

**GSM Electrical (Australia) Pty Ltd**

Level 2, 142-144 Fullarton Road, Rose Park SA 5067  
P: 1300 301 838 F: 1300 301 778 E: service@gsme.com.au  
[www.gsme.com.au](http://www.gsme.com.au)



Data Specification Sheet  
April 2022

**MESW**  
**MESWFAN**  
**MESWHEAT**  
**MESWLIGHT**  
**MESW20**  
**MESW32**  
**MESW32OVEN**  
**MESW32HOB**  
**MESWI**  
**MESWDP**  
**MESWBPR**  
**MESWDP20**  
**MESWDP20HOB**  
**MESWDP20OVEN**  
**MESW3\***

MESW switch mechanism are used in conjunction with Flat Cat, Puma and Cougar switch plates

Note: MESWC (Cat's Eye) switch mechanism are used in conjunction with Snow Leopard, Leopard and Cheetah switch plates

\*Multiple print options available - see catalogue or website for further detail.

#### Cleaning Guide:

Spraying cleaning products on to electrical products is not recommended.

It is important to ensure that switches are turned off before cleaning.

Do not use any cleaning sprays - only wipe down with damp cloth or rub with dry cloth. (Do not use an abrasive cloth as it may scratch the plastic).

Do not use harsh chemical cleaners as these can break down the plastic and cause it to crack.



## Meerkat Range of Rocker Switch Mechanisms

*For use in conjunction with FLAT CAT, PUMA and COUGAR*

- MESW (was COSWM) - approved to AS/NZS3133.
- Designed to clip into Flat Cat, Puma and Cougar switch plates, also fits all Trader Ranges and many others.
- Uses brass tunnel terminal that have the screws backed out for easier installation of cabling. Switches are single pole two way with looping terminal and suit 4 x 1.5mm<sup>2</sup> cables with 4.1mm bore.
- Slotted head terminal screws, and backed out for easy installation.
- Covers, plates and dollies are made from UV stabilised polycarbonate to avoid discolouring to yellow.
- Please check availability.



Catalogue Number	Description
MESW	Switch Mechanism 10AX/16A 250V~
MESWFAN	Switch Mechanism 10AX/16A 250V~ (Labelled Fan)
MESWHEAT	Switch Mechanism 10AX/16A 250V~ (Labelled Heat)
MESWLIGHT	Switch Mechanism 10AX/16A 250V~ (Labelled Light)
MESW20	Switch Mechanism 16AX/20A 250V~
MESW32	Switch Mechanism 32A 250V~
MESW32OVEN	Switch Mechanism 32A 250V~ (Labelled Oven)
MESW32HOB	Switch Mechanism 32A 250V~ (Labelled Hob)
MESWI	Intermediate Switch Mechanism 10AX 250V~
MESWBPR	Switch Mechanism Bell Press Return 10AX/16A 250V~
MESWDP	Double Pole Switch Mechanism 10AX 250V~
MESWDP20	Double Pole Switch Mechanism 20A 250V~
MESWDP20HOB	Double Pole Switch Mechanism 20A 250V~ (Labelled Hob)
MESWDP20OVEN	Double Pole Switch Mechanism 20A 250V~ (Labelled Oven)
MESW3	Switch Mechanism 3-Position 10AX/16A 250V~

- For colours and finishes see Meerkat Rocker Matrix on following pages.
- Colours available: White (Standard), Black (BK), Matt White (MW), Matt Black (MBK) and Green (G). Check for availability.

**The MEERKAT Rocker Switch Mechanism (MESW) was previously (COSWM) and is universal to all Flat Cat, Puma and Cougar switch plates.**

**FLAT CAT**  **PUMA**  **COUGAR** 

**Certification Number:** MESW: GMA-501682-EA / GMA-501835-EA / GMA-508487-EA MESWBPR: GMA-508434-EA

**GSM Electrical (Australia) Pty Ltd**

Level 2, 142-144 Fullarton Road, Rose Park SA 5067

P: 1300 301 838 F: 1300 301 778 E: service@gsme.com.au

[www.gsme.com.au](http://www.gsme.com.au)



Data Specification Sheet  
 April 2022

PART NO.			DESCRIPTION	SNOW LEOPARD	CLOUDED LEOPARD	LEOPARD	FLAT CAT	PUMA	COUGAR
	MESWC	ALL GREEN BASED MECHS ARE 16AX/20AMP STANDARD	Switch Mechanism 16AX/20A 250V~	✓		✓			
	MESWCBK		Switch Mechanism 16AX/20A 250V~ Cat's Eye Black	✓		✓			
	MESWCMW		Switch Mechanism 16AX/20A 250V~ Cat's Eye Matt White		✓				
	MESWCMBK		Switch Mechanism 16AX/20A 250V~ Cat's Eye, Matt Black		✓				
	MESWCSV		Switch Mechanism 16AX/20A 250V~ Cat's Eye Silver	✓					
	MESWCFAN		Switch Mechanism 16AX/20A 250V~ Cat's Eye (Labelled Fan)	✓		✓			
	MESWCHEAT		Switch Mechanism 16AX/20A 250V~ Cat's Eye (Labelled Heat)	✓		✓			
	MESWCLIGHT		Switch Mechanism 16AX/20A 250V~ Cat's Eye (Labelled Light)	✓		✓			
	MESW32C		Switch Mechanism 32A 250V~ Cat's Eye	✓		✓			
	MESW32CBK		Switch Mechanism 32A 250V~ Cat's Eye Black	✓		✓			
	MESW32CMW		Switch Mechanism 32A 250V~ Cat's Eye, Matt White		✓				
	MESW32CMBK		Switch Mechanism 32A 250V~ Cat's Eye, Matt Black		✓				
	MESW32CSV		Switch Mechanism 32A 250V~ Cat's Eye, Silver	✓					
	MESW32COVEN		Switch Mechanism 32A 250V~ Cat's Eye (Labelled Oven)	✓		✓			
	MESW32CHOB		Switch Mechanism 32A 250V~ Cat's Eye (Labelled HOB)	✓		✓			
	MESWCI		Intermediate Switch Mechanism 10AX 250V~ Cat's Eye	✓		✓			
	MESWCIBK		Intermediate Switch Mechanism 10AX 250V~ Cat's Eye Black	✓		✓			
	MESWCIMW		Intermediate Switch Mechanism 10AX 250V~ Cat's Eye, Matt White		✓				
	MESWCIMBK		Intermediate Switch Mechanism 10AX 250V~ Cat's Eye, Matt Black		✓				
	MESWCISV		Intermediate Switch Mechanism 10AX 250V~ Cat's Eye Silver	✓					
	MESWCDP		Double Pole Switch Mechanism 10AX 250V~ Cat's Eye	✓		✓			
	MESWCDPBK		Double Pole Switch Mechanism 10AX 250V~ Cat's Eye, Black	✓		✓			
	MESWCDPMW		Double Pole Switch Mechanism 10AX 250V~ Cat's Eye, Matt White		✓				
	MESWCDPMBK		Double Pole Switch Mechanism 10AX 250V~ Cat's Eye, Matt Black	✓	✓				
	MESWCDPSV		Double Pole Switch Mechanism 10AX 250V~ Cat's Eye Silver	✓					



ME = Meerkat

SW = Switch

C = Cat's Eye

BK = Black

MW= Matt White

MBK=MattBlackSV

= Silver



PART NO.	DESCRIPTION	SNOW LEOPARD	CLOUDED LEOPARD	LEOPARD	FLAT CAT	PUMA	COUGAR
MESWC3	Switch Mechanism 3-Position 10AX/16A 250V~ Cat's Eye	✓		✓			
MESWC3BK	Switch Mechanism 3-Position 10AX/16A 250V~ Cat's Eye, Black	✓		✓			
MESWC3MW	Switch Mechanism 3-Position 10AX/16A 250V~ Cat's Eye, Matt White		✓				
MESWC3MBK	Switch Mechanism 3-Position 10AX/16A 250V~ Cat's Eye, Matt Black		✓				
MESWC3AOM	Switch Mechanism 3-Position 10AX/16A 250V~ Cat's Eye AUTO/OFF/MAN	✓		✓			
MESWC3AOMBK	Switch Mechanism 3-Position 10AX/16A 250V~ Cat's Eye AUTO/OFF/MAN, Black	✓		✓			
MESWC3AOMMW	Switch Mechanism 3-Position 10AX/16A 250V~ Cat's Eye AUTO/OFF/MAN, Matt White		✓				
MESWC3AOMMBK	Switch Mechanism 3-Position 10AX/16A 250V~ Cat's Eye AUTO/OFF/MAN, Matt Black		✓				
MESWC3S00	Switch Mechanism 3-Position 10AX/16A 250V~ Cat's Eye SENSOR/OFF/ON	✓		✓			
MESWC3S00BK	Switch Mechanism 3-Position 10AX/16A 250V~ Cat's Eye SENSOR/OFF/ON, Black	✓		✓			
MESWC3S00MW	Switch Mechanism 3-Position 10AX/16A 250V~ Cat's Eye SENSOR/OFF/ON, Matt White		✓				
MESWC3S00MBK	Switch Mechanism 3-Position 10AX/16A 250V~ Cat's Eye SENSOR/OFF/ON, Matt Black		✓				
MESWC3U0D	Switch Mechanism 3-Position 10AX/16A 250V~ Cat's Eye UP/OFF/DOWN	✓		✓			
MESWC3U0DBK	Switch Mechanism 3-Position 10AX/16A 250V~ Cat's Eye UP/OFF/DOWN, Black	✓		✓			
MESWC3U0DMW	Switch Mechanism 3-Position 10AX/16A 250V~ Cat's Eye UP/OFF/DOWN, Matt White		✓				
MESWC3U0DMBK	Switch Mechanism 3-Position 10AX/16A 250V~ Cat's Eye UP/OFF/DOWN, Matt Black		✓				
MESWCBPR	Switch Mechanism Bell Press Return 10AX/16A 250V~ Cat's Eye	✓		✓			
MESWCBPRBK	Switch Mechanism Bell Press Return 10AX/16A 250V~ Cat's Eye, Black	✓		✓			
MESWCBPRMW	Switch Mechanism Bell Press Return 16AX/20A 250V~ Cat's Eye, Matt White		✓				
MESWCBPRMBK	Switch Mechanism Bell Press Return 16AX/20A 250V~ Cat's Eye, Matt Black		✓				

ME = Meerkat

SW = Switch

C = Cat's Eye

BK = Black

MW= Matt White

MBK=MattBlackSV

= Silver







PART NO.	DESCRIPTION	SNOW LEOPARD	CLOUDED LEOPARD	LEOPARD	FLAT CAT	PUMA	COUGAR
 MESW	Switch Mechanism 10AX/16A 250V~				✓	✓	✓
 MESWBK	Switch Mechanism 10AX/16A 250V~ Black				✓	✓	
 MESWMW	Switch Mechanism 10AX/16A 250V~ Matt White				✓		
 MESWMBK	Switch Mechanism 10AX/16A 250V~ Matt Black				✓		
 MESWFAN	Switch Mechanism 16A 250V~ (Labelled Fan)				✓	✓	✓
 MESWHEAT	Switch Mechanism 16A 250V~ (Labelled Heat)				✓	✓	✓
 MESWLIGHT	Switch Mechanism 16A 250V~ (Labelled Light)				✓	✓	✓
 MESWGR	Switch Mechanism 10AX/16A 250V~ Green				✓	✓	✓
 MESW20	Switch Mechanism 16AX/20A 250V~				✓	✓	✓
 MESW20BK	Switch Mechanism 16AX/20A 250V~ Black				✓		
 MESW20MW	Switch Mechanism 16AX/20A 250V~ Matt White				✓	✓	
 MESW20MBK	Switch Mechanism 16AX/20A 250V~ Matt Black				✓		
 MESWDP20	Double Pole Switch Mechanism 20A 250V~				✓	✓	✓
 MESWDP20BK	Double Pole Switch Mechanism 20A 250V~ Black				✓	✓	
 MESWDP20HOB	Double Pole Switch Mechanism 20A 250V~ (Labelled HOB)				✓	✓	✓
 MESWDP20HOBK	Double Pole Switch Mechanism 20A 250V~ (Labelled HOB) Black				✓	✓	
 MESWDP20OVEN	Double Pole Switch Mechanism 20A 250V~ (Labelled OVEN)				✓	✓	✓
 MESWDP20OVENBK	Double Pole Switch Mechanism 20A 250V~ (Labelled OVEN) Black				✓	✓	
 MESW32	Switch Mechanism 32A 250V~				✓	✓	
 MESW32BK	Switch Mechanism 32A 250V~ Black				✓	✓	
 MESW32MW	Switch Mechanism 32A 250V~ Matt White				✓		
 MESW32MBK	Switch Mechanism 32A 250V~ Matt Black				✓		
 MESW32OVEN	Switch Mechanism 32A 250V~ (Labelled Oven)				✓	✓	✓
 MESW32HOB	Switch Mechanism 32A 250V~ (Labelled HOB)				✓	✓	✓

ALL GREEN BASED MECHS ARE  
16AX/20AMP STANDARD



ME = Meerkat

SW = Switch

C = Cat's Eye

BK = Black

MW= Matt White MBK= Matt BlackSV

= Silver

G = Green



PART NO.	DESCRIPTION	SNOW LEOPARD	CLOUDED LEOPARD	LEOPARD	FLAT CAT	PUMA	COUGAR
 MESWI	Intermediate Switch Mechanism 10AX 250V~				✓	✓	✓
 MESWIBK	Intermediate Switch Mechanism 10AX 250V~ Black				✓	✓	
 MESWIMW	Intermediate Switch Mechanism 10AX 250V~ Matt White				✓		
 MESWIMBK	Intermediate Switch Mechanism 10AX 250V~ Matt Black				✓		
 MESWDP	Double Pole Switch Mechanism 10AX 250V~				✓	✓	✓
 MESWDPBK	Double Pole Switch Mechanism 10AX 250V~ Black				✓	✓	
 MESWDPMW	Double Pole Switch Mechanism 10AX 250V~ Matt White				✓		
 MESWDPMBK	Double Pole Switch Mechanism 10AX 250V~ Matt Black				✓		
 MESW3	Switch Mechanism 3-Position 10AX/16A 250V~				✓	✓	✓
 MESW3BK	Switch Mechanism 3-Position 10AX/16A 250V~ Black				✓	✓	
 MESW3MW	Switch Mechanism 3-Position 10AX/16A 250V~ Matt White				✓		
 MESW3MBK	Switch Mechanism 3-Position 10AX/16A 250V~ Matt Black				✓		
 MESW3AOM	Switch Mechanism 3-Position 10AX/16A 250V~ AUTO/OFF/MAN				✓	✓	✓
 MESW3AOMBK	Switch Mechanism 3-Position 10AX/16A 250V~ AUTO/OFF/MAN, Black				✓	✓	
 MESW3AOMMW	Switch Mechanism 3-Position 10AX/16A 250V~ AUTO/OFF/MAN, Matt White				✓		
 MESW3AOMMBK	Switch Mechanism 3-Position 10AX/16A 250V~ AUTO/OFF/MAN, Matt Black				✓		
 MESW3S00	Switch Mechanism 3-Position 10AX/16A 250V~ SENSOR/OFF/ON				✓	✓	✓
 MESW3S00BK	Switch Mechanism 3-Position 10AX/16A 250V~ SENSOR/OFF/ON, Black				✓	✓	
 MESW3S00MW	Switch Mechanism 3-Position 10AX/16A 250V~ SENSOR/OFF/ON, Matt White				✓		
 MESW3S00MBK	Switch Mechanism 3-Position 10AX/16A 250V~ SENSOR/OFF/ON, Matt Black				✓		
 MESW3U0D	Switch Mechanism 3-Position 10AX/16A 250V~ UP/OFF/DOWN				✓	✓	✓
 MESW3U0DBK	Switch Mechanism 3-Position 10AX/16A 250V~ UP/OFF/DOWN, Black				✓	✓	
 MESW3U0DMW	Switch Mechanism 3-Position 10AX/16A 250V~ UP/OFF/DOWN, Matt White				✓		
 MESW3U0DMBK	Switch Mechanism 3-Position 10AX/16A 250V~ UP/OFF/DOWN, Matt Black				✓		
 MESWBPR	Switch Mechanism Bell Press Return 10AX/16A 250V~				✓	✓	✓
 MESWBPRBK	Switch Mechanism Bell Press Return 10AX/16A 250V~ Black				✓	✓	
 MESWBPRMW	Switch Mechanism Bell Press Return 10AX/16A 250V~ Matt White				✓		
 MESWBPRMBK	Switch Mechanism Bell Press Return 10AX/16A 250V~ Matt Black				✓		

ME = Meerkat

SW = Switch

C = Cat's Eye

BK = Black

MW= Matt White

MBK= Matt Black SV

= Silver

G = Green

**MENRD  
MENGR  
MENOR  
MENRD24  
MENGR24  
MENOR24**

\*See current catalogue for further detail

**Cleaning Guide:**

Spraying cleaning products on to electrical products is not recommended. It is important to ensure that switches are turned off before cleaning.

Do not use any cleaning sprays - only wipe down with damp cloth or rub with dry cloth. (Do not use an abrasive cloth as it may scratch the plastic).

Do not use harsh chemical cleaners as these can break down the plastic and cause it to crack.



## Meerkat Range of Neon Mechs

- Colours available are Green, Orange (Amber) and Red.
- Neons draw approximately 250-275mW at 250V.
- Neutral and Active can be connected to either terminal.
- Terminal bores of 4.1mm  $\varnothing$  accommodate 4 x 1.5mm<sup>2</sup> or 3 x 2.5mm<sup>2</sup> cables
- Note: Inductive loads occasionally cause neons to glow in OFF position. To overcome this, place a 47k $\Omega$ , 0.5W 240V resistor across the terminals.
- 24 Volt neons are also available in the same colours and housings and are suitable for specific load signaling applications.
- Identification for 250V shown on lens.
- 24V version shows 24V on lens as well as large label on base for identification.
- Neons can operate in both a.c. or d.c. conditions.



**MENRD**



**MENGR**



**MENOR**



**MENOR24**

Catalogue Number	Description
MENRD	Neon Indicator Mechanism 250V Red
MENGR	Neon Indicator Mechanism 250V Green
MENOR	Neon Indicator Mechanism 250V Orange
MENRD24	Neon Indicator Mechanism 24V Red
MENGR24	Neon Indicator Mechanism 24V Green
MENOR24	Neon Indicator Mechanism 24V Orange

**Certification:**  
TBC

**GSM Electrical (Australia) Pty Ltd**  
Level 2, 142-144 Fullarton Road, Rose Park SA 5067  
P: 1300 301 838 F: 1300 301 778 E: service@gsme.com.au

[www.gsme.com.au](http://www.gsme.com.au)



Data Specification Sheet  
June 2021

**MERJ5CM**  
**MERJ6CM**  
**MERJ6CMBK**  
**MERJ45PH8P4C**

\*See current catalogue for further detail

**Note:**

MERJ5CM was CORJ5CM  
MERJ6CM was CORJ6CM

**Cleaning Guide:**

Spraying cleaning products on to electrical products is not recommended. It is important to ensure that switches are turned off before cleaning.

Do not use any cleaning sprays - only wipe down with damp cloth or rub with dry cloth. (Do not use an abrasive cloth as it may scratch the plastic).

Do not use harsh chemical cleaners as these can break down the plastic and cause it to crack.

## Meerkat Range of Data Mechs

**MERJ5CM - Cat5e Data Jack Clip in Mech**

- Approved to AS/CA S008
- Clips into standard plate aperture
- Terminates with both the Krone<sup>#</sup> and 110 tools
- Colour: White



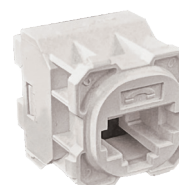
**MERJ6CM - Cat6 Data Jack Clip in Mech (White)**  
**MERJ6CMBK - Cat6 Data Jack Clip in Mech (Black)**

- Approved to AS/CA S008
- Clips into standard plate aperture
- Terminates with both the Krone<sup>#</sup> and 110 tools



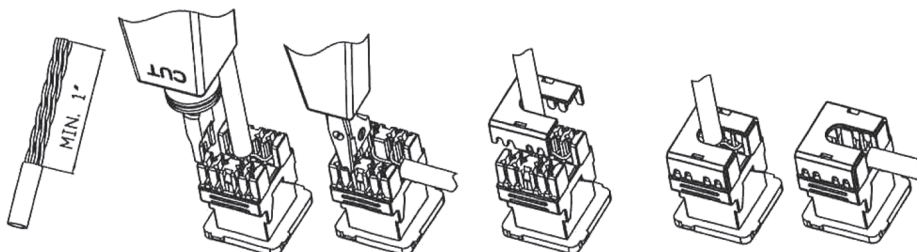
**MERJ45PH8P4C**

- Approved to AS/CA S008
- Clips into standard plate aperture
- Terminates with the Krone<sup>#</sup>
- Has phone symbol on front of jack
- Contains four (4) contact termination points
- Colour: White



<sup>#</sup>Krone is a registered trademark of Krone G.m.b.H

**THIS TERMINATION INSTRUCTION IS FOR MERJ5CM AND MERJ6CM ONLY**



**STEP 1:**

Strip off at least 1 inch of jacket from end of cable.

**STEP 2:**

Insert wires into IDC's according to the desired wiring configuration (T568B/T568A). Terminate wires using punch down tool. Make sure the tool is set to trim excess wire as shown.

\*Do not untwist the wire pairs until the punch down tool has trimmed them flush.

**STEP 3:**

Place termination cap on jack and press cap to make sure it is fully seated.

**STEP 4:**

Adjust the cable to a suitable position in the opening of the cap.

Catalogue Number	Description
MERJ5CM	Data Outlet Clip in Mech - Cat5e
MERJ6CM	Data Outlet Clip in Mech - Cat6 - White
MERJ6CMBK	Data Outlet Clip in Mech - Cat6 - Black
MERJ45PH8P4C	RJ45 Cat3 Phone Jack

**Note: MERJ5CM was CORJ5CM / MERJ6CM was CORJ6CM**

**Certification:**

Test Reports: Austest 0318GSM\_CORJ5CM\_S008

Test Reports: Austest 0321GSM\_CORJ6CM\_S008

Test Report : Australian Communications Laboratory  
Pty Ltd ACL 1270 (for MERJ45PH8P4C)

**GSM Electrical (Australia) Pty Ltd**

Level 2, 142-144 Fullarton Road, Rose Park SA 5067

P: 1300 301 838 F: 1300 301 778 E: service@gsme.com.au

[www.gsme.com.au](http://www.gsme.com.au)



Data Specification Sheet  
January 2020



## MERJ6ACM MERJ6ACMTT

\*See current catalogue for further detail



### Cleaning Guide:

Spraying cleaning products on to electrical products is not recommended. It is important to ensure that switches are turned off before cleaning.

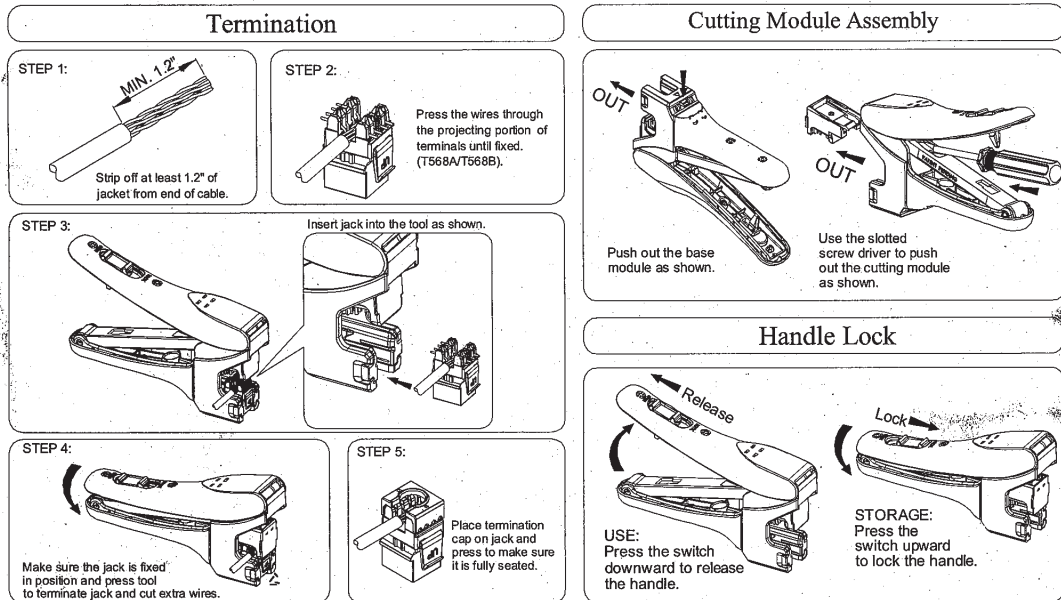
Do not use any cleaning sprays - only wipe down with damp cloth or rub with dry cloth. (Do not use an abrasive cloth as it may scratch the plastic).

Do not use harsh chemical cleaners as these can break down the plastic and cause it to crack.



## Registered 16A Cable Clip Mech and 6A Cable Clip Mech Termination Tool

- The MERJ6ACM registered jack (RJ-45 style) is perfect for ethernet connecting hardware applications in the office or at home and provides Cat 6A performance, capable of supporting data transfer rates up to 10Gbps at a maximum bandwidth of 500MHz.
- Tested in accordance and complies with AS/CA S008 2020
- Complies with IEC60603-7 section 5.7 connecting hardware, including plugs and sockets of all designs.
- Complies with IEC 60603-7 Clause 6.4.2 for Voltage proof where connecting hardware shall have dielectric withstand capability of 1.5kV for 60 s.
- Complies with IEC 60512, Test 4a for 1000 VDC or AC peak contact to all contacts.
- Complies with IEC 60512, Test 4a for 1500 VDC or AC peak all contact to shield.
- Suitable for termination using a 110 tool or MERJ6ACMTT, quick cable clip termination tool as shown in instructions. (Note: this model does not suite a Krone tool termination)
- Kit comes with cable clip that is compatible with TRADER wall plate apertures.
- Available colour: White



Catalogue Number	Description
MERJ6ACM	Registered Jack Category 6A Cable Clip Mech
MERJ6ACMTT	Meerkat Registered Jack Category 6A Cable Clip Mech Termination Tool

### Certification:

**GSM Electrical (Australia) Pty Ltd**  
Level 2, 142-144 Fullarton Road, Rose Park SA 5067  
P: 1300 301 838 F: 1300 301 778 E: service@gsm.com.au

[www.gsm.com.au](http://www.gsm.com.au)



Data Specification Sheet  
November 2023

**METVFPCM**  
**METVFFCMFX**  
**METVFFCMFXBK**  
**METVFFA90FX**

\*See current catalogue for further detail

**Cleaning Guide:**

Spraying cleaning products on to electrical products is not recommended. It is important to ensure that switches are turned off before cleaning.

Do not use any cleaning sprays - only wipe down with damp cloth or rub with dry cloth. (Do not use an abrasive cloth as it may scratch the plastic).

Do not use harsh chemical cleaners as these can break down the plastic and cause it to crack.



## Meerkat Range of TV Mechs

### METVFPCM

- TV Socket F Type to PAL Modular Clip
- Clip in mechanism is made from UV stabilised polycarbonate to avoid discolouring to yellow
- Colour: White



### METVFFCMFX

- TV Socket, F to F Type Connection Modular Clip Foxtel Approved F30561
- Clip in mechanism is made from UV stabilised polycarbonate to avoid discolouring to yellow
- Colour: White and Black



### METVFFA90FX

- TV Socket, F to F Type Connection Adapter 90° Foxtel Approved F30573



Catalogue Number	Description
METVFPCM	TV Socket F Type to PAL Modular Clip
METVFFCMFX	TV Socket, F to F Type Connection Modular Clip Foxtel Approved
METVFFCMFXBK	TV Socket, F to F Type Connection Modular Clip Foxtel Approved, Black
METVFFA90FX	TV Socket, F to F Type Connection Adapter 90° Foxtel Approved

**MEHDMIFR**  
**MEHDMI2**  
**MEHDMIA90FM**

\*See current catalogue for further detail

## Meerkat HDMI® Accessories

The Trader HDMI connectors and cables are manufactured and tested in accordance with the HDMI 2.0 specification

- HDMI 2.0 is backwards compatible with earlier versions of the HDMI specification
- Bandwidth up to 18Gbps
- Resolutions up to 4K@50/60 (2160p), which is 4 times the clarity of 1080p/60 video resolution
- Up to 32 audio channels
- Up to 1536kHz audio sample frequency
- Simultaneous delivery of dual video streams to multiple users on the same screen
- Simultaneous delivery of multi-stream audio to multiple users (Up to 4)
- Support for the wide angle theatrical 21:9 video aspect ratio
- Dynamic synchronization of video and audio streams

### MEHDMIFR

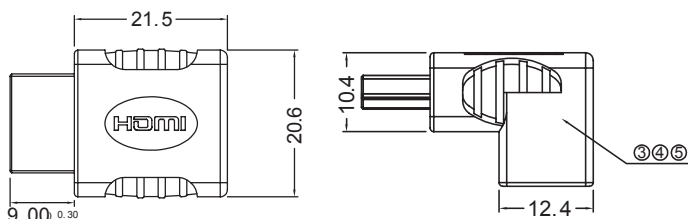
- HDMI® Flat Ribbon - Fem to Fem 12.5cm

### MEHDMI2

- HDMI® Cable - Fem to Fem 2.5m  
With 2 clips

### MEHDMIA90FM

- HDMI Adaptor 90 Degree Female to Male  
Supports 4K Video



Catalogue Number	Description
MEHDMIFR	HDMI® Flat Ribbon 12.5cm
MEHDMI2	HDMI® Socket Cable Connection Fem/Fem with 2 Clips, 2.5m
MEHDMIA90FM	HDMI Adaptor 90 Degree Female to Male Supports 4K Video



Fan Controller + Capacitor

**MEFC**

**MEFC2**

Fan Controller (less capacitor)

**MEFCM**

Capacitor Only

**MEFCCAP**

**MEFC2CAP**

Knob Styles available include:

**MEFCKBMW**

**MEFCKBFW**

**MEFCKBBK**

**MEFCKBMBK**

#### Cleaning Guide:

Spraying cleaning products on to electrical products is not recommended. It is important to ensure that switches are turned off before cleaning.

Do not use any cleaning sprays - only wipe down with damp cloth or rub with dry cloth. (Do not use an abrasive cloth as it may scratch the plastic).

Do not use harsh chemical cleaners as these can break down the plastic and cause it to crack.



## Meerkat Fan Controllers

**MEFC Fan Controller Capacitor:** 1.6uF to 2.3uF 75VA capacitor 3 speed, 250V~ 3A M5

**MEFC2 Fan Controller Capacitor:** 1.8uF to 2.7uF 75VA capacitor, 3 speed, 250V~ 3A M5

The MEFC and MEFC2 fan controllers are set up for use with a wide range of existing ceiling fans. They clip into many Australian wall plates and look their best in the TRADER range. They also suit other plates in the market that use the common Clipsal\* style aperture.

The design of the controllers suits standard layouts with the capacitor positioned below the mech and behind the wall plate. The two different capacitors provide speed control for the most common style of AC motors in the market.

Various knob finishes are available to suit replacement into different wall plate ranges.

Please note the fan controller knobs do not fit Clipsal\* fan controller shafts, as there is a size difference.

Designed to be suitable for 75Watt fans.

Fan Controllers (less capacitor) and Capacitors are also available as spare parts, refer to table below.



MEFC  
Supplied with standard white knob



MEFC2  
Supplied with standard white knob



Example above shows  
Trader's Leopard Range  
(LESWPV1G) with  
MEFCKB standard white  
knob supplied

Alternative colours and knob finishes available:



MEFCKBMW  
Matt White



MEFCKBFW  
Feral White



MEFCKBBK  
Black



MEFCKBMBK  
Matt Black

Catalogue Number	Description
MEFC	Fan Controller, 1.6uF to 2.3uF 75VA capacitor, 3 speed, 250V~ 3A M5
MEFC2	Fan Controller, 1.8uF to 2.7uF 75VA capacitor, 3 speed, 250V~ 3A M5
MEFCM	Fan Controller Mechanism (less capacitor) 3 speed, 250V~ 3A M5
MEFCCAP	Capacitor 1.6uF to 2.3uF 75VA for MEFC Fan Controller 280V AC
MEFC2CAP	Capacitor 1.8uF to 2.7uF 75VA for MEFC2 Fan Controller 280V AC

\*The Clipsal brand and associated products are registered trademarks of Schneider Electric (Australia) Pty Ltd. GSM Electrical (Australia) Pty Ltd, the TRADER brand and it's products, have no endorsement or affiliation with Schneider Electric Pty Ltd.

**Certification Number:** GMA-506952-EA

**GSM Electrical (Australia) Pty Ltd**

Level 2, 142-144 Fullarton Road, Rose Park SA 5067

P: 1300 301 838 F: 1300 301 778 E: service@gsme.com.au

[www.gsme.com.au](http://www.gsme.com.au)



Data Specification Sheet  
November 2023



**MEPBM  
MEPBMBK  
MEPBMMW  
MEPBMMBK**



**Cleaning Guide:**

Spraying cleaning products directly on to electrical switches or power points (sockets) is not recommended.

It is important to ensure that switches are turned off before cleaning.

Do not use any cleaning sprays - only wipe down with damp cloth or rub with dry cloth. Do not use an abrasive cloth as it may scratch the plastic.

Do not use harsh chemical cleaners as these can break down the plastic and cause it to crack.



## Meerkat Momentary Push Button

- 2 Amp 240V~
- This is a momentary push action switch. It makes contact when pushed in, and breaks contact when released. It does not have a snap action feel.
- Available with different print markings which can be ordered through the customer service team.
- Ideal for use in building / lighting control systems as an interface button.
- Suitable for use in all Trader switch plate ranges and most Clipsal\* ranges too.
- Buttons can be labelled for identification. Contact TRADER for printing service.

Catalogue Number	Description
MEPBM	Push Button Switch, Momentary, 2A 250V~ White
MEPBMBK	Push Button Switch, Momentary, 2A 250V~ Black
MEPBMMW	Push Button Switch, Momentary, 2A 250V~ Matt White
MEPBMMBK	Push Button Switch, Momentary, 2A 250V~ Matt Black

\*The Clipsal brand and associated products are Trademarks of Schneider Electric (Australia) Pty Ltd. and used for reference only

**Certification Number:** SAA-1730190-EA

**GSM Electrical (Australia) Pty Ltd**

Level 2, 142-144 Fullarton Road, Rose Park SA 5067

P: 1300 301 838 F: 1300 301 778 E: service@gsme.com.au

[www.gsme.com.au](http://www.gsme.com.au)



Data Specification Sheet  
March 2022

## MEPBE



USED IN  
CONJUNCTION WITH:  
MEPBMW Push Button  
Multi-Way Remote  
Dimming and On/Off  
Switching



### BUTTON CAPS:

**MEBUMW**  
**MEBUMBK**  
**MEBUC**  
**MEBUCBK**  
**MEBUCSV**  
**MEBUCMW**  
**MEBUCMBK**

### Cleaning Guide:

Spraying cleaning products directly on to electrical switches or power points (sockets) is not recommended.

It is important to ensure that switches are turned off before cleaning.

Do not use any cleaning sprays - only wipe down with damp cloth or rub with dry cloth. Do not use an abrasive cloth as it may scratch the plastic.

Do not use harsh chemical cleaners as these can break down the plastic and cause it to crack.



## Push Button Switching

### MEPBE Push Button, Electronic On/Off Switch, 3-wire

#### FEATURES

- Soft touch push button ON/ OFF switch.
- Blue LED indicates device status.
- Returns to OFF after loss of power.
- Compatible with a wide range of load types including wire wound transformers & fan motors.
- Compatible with Trader and Clipsal\* Style wall plates.
- Multi-Way Switching when used in conjunction with the **MEPBMW** Multi-Way Remote Dimmer & ON/OFF Push Button.
- Supplied with MEBU Gloss White & Gloss Black buttons, suits Puma, Cougar & Flat Cat gloss finishes.

#### OPERATING CONDITIONS

- Operating Voltage: 230 – 240V a.c. 50Hz
- Maximum Load: 1200W / 500VA (see table below)
- Maximum Current Capacity: 5A
- Terminals: Screw Terminals suit 0.5mm<sup>2</sup> to 1.5mm<sup>2</sup> stranded cable (bootlace terminal recommended)
- Operating Temperature: 0 to +50 °C
- Compliance Standard: CISPR15, AS/NZS 3100, AS/NZS 60669.2.1

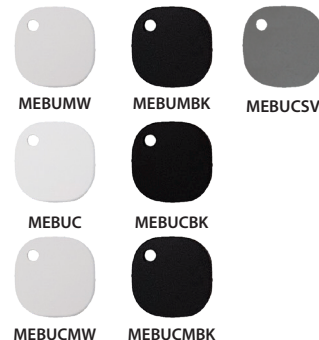
*Note: Operation at temperature, voltage or load outside of the specifications may cause permanent damage to the unit.*

#### LOAD COMPATIBILITY

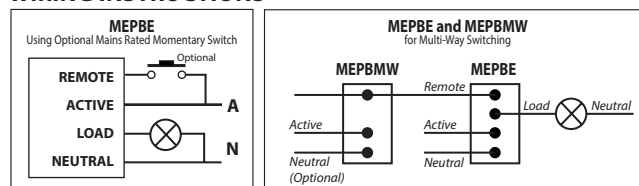
LOAD TYPE	COMPATIBILITY
Incandescent / 240V Halogen	1200W
Fluorescent Tube with Electronic Ballast	500VA
Fluorescent Tube with Iron Core Ballast	500VA
Compact Fluorescent	500VA
Electronic Transformer	500VA
LED	500VA
Wirewound Transformer	500VA
Fan Motors	500VA
Heating Elements	1200W

#### WHITE, BLACK, SILVER, MATT WHITE & MATT BLACK BUTTONS AVAILABLE:

MEBUMW & MEBUMBK (curved button for Flat Cat),  
MEBUC & MEBUCBK (flat button for Leopard and Snow Leopard),  
MEBUCSV (flat button for Snow Leopard Silver finishes)  
MEBUCMW & MEBUCMBK (flat button for Clouded Leopard matt finishes)



#### WIRING INSTRUCTIONS



Catalogue Number	Description
MEPBE	Push Button, Electronic On/Off Switch, 3-wire
MEBUMW	Curved Button for MEPBE, MEPBMW & DIMPBD, for use with Flat Cat Matt White
MEBUMBK	Curved Button for MEPBE, MEPBMW & DIMPBD for use with Flat Cat Matt Black
MEBUC	Flat Button Gloss White for DIMPBD, MEPBE, MEPBMW for use & best aperture fit with Leopard & Snow Leopard White.
MEBUCBK	Flat Button Gloss Black for DIMPBD, MEPBE, MEPBMW use & best aperture fit with Leopard & Snow Leopard Black.
MEBUCMW	Flat button for MEPBE, MEPBMW & DIMPBD for use & best aperture fit with Clouded Leopard Matt White. Not suitable for Flat Cat.
MEBUCMBK	Flat button for MEPBE, MEPBMW & DIMPBD for use & best aperture fit with Clouded Leopard Matt Black. Not suitable for Flat Cat.

\*The Clipsal brand and associated products are Trademarks of Schneider Electric (Australia) Pty Ltd. and used for reference only.

**Certification Number:** GMA-504067-EA

**GSM Electrical (Australia) Pty Ltd**

Level 2, 142-144 Fullarton Road, Rose Park SA 5067

P: 1300 301 838 F: 1300 301 778 E: service@gsme.com.au

[www.gsme.com.au](http://www.gsme.com.au)



Data Specification Sheet  
Aug 2022

## MEPBMW



MEERKAT  
MEPBMW

CAN BE USED IN  
CONJUNCTION WITH:  
MEPBE Electronic Switch



### BUTTON CAPS:

MEBUMW  
MEBUMBK  
MEBUC  
MEBUCBK  
MEBUCSV  
MEBUCMW  
MEBUCMBK

### Cleaning Guide:

Spraying cleaning products directly on to electrical switches or power points (sockets) is not recommended.

It is important to ensure that switches are turned off before cleaning.

Do not use any cleaning sprays - only wipe down with damp cloth or rub with dry cloth. Do not use an abrasive cloth as it may scratch the plastic.

Do not use harsh chemical cleaners as these can break down the plastic and cause it to crack.



# Push Button Switching & Dimming

## MEPBMW Push Button, Multi-Way Remote Dimming and On/Off Switching

The MEPBMW Remote Button enables Multi-Way dimming and ON/OFF switching with the DIMPBD Digital Dimmer. It can also be used in conjunction with MEPBE switch for Multi-Way ON/OFF control switching only. An inbuilt LED indicator can be configured two ways by connecting Neutral to the MEPBMW:

1. The LED indicator can be permanently "ON".
2. Or "ON" while the button is pressed.

The MEPBMW will operate without neutral connected but the LED indicator will not function.

Multiple MEPBMW push button mechanisms can be connected in parallel to a single DIMPBD dimmer or a MEPBE electronic switch, provided the total length of the remote connection does not exceed 50 metres.

It operates as a 'slave' button and provides full functionality to the master module that it is connected to.

### LOAD COMPATIBILITY

- For use with MEPBE or DIMPBD mechs only (NOT FOR STANDALONE MAINS SWITCHING).

### FEATURES

- Enables Multi-Way dimming and ON/OFF switching for DIMPBD Digital Dimmers.
- Enables Multi-Way ON/OFF switching for MEPBE Electronic Switches.
- Neutral not required for button only operation (no illumination).
- Optional LED Indicator operation requires Neutral.
- Suits Trader and Clipsal\* style wall plates.
- Supplied with MEBU Gloss White & Gloss Black buttons, suits Puma, Cougar & Flat Cat gloss finishes.

### OPERATING CONDITIONS

- Operating Voltage: 230 - 240V a.c. 50Hz.
- Power Rating: Based upon connected Dimmer or Electronic Switch.
- Connection Type: Flying leads with bootlace terminals.
- Operating Temperature: 0 to +50 °C.
- Compliance Standard: AS/NZS 60669.2.1, CISPR15.

*Note: Operation at temperature, voltage or load outside of the specifications may cause permanent damage to the unit.*

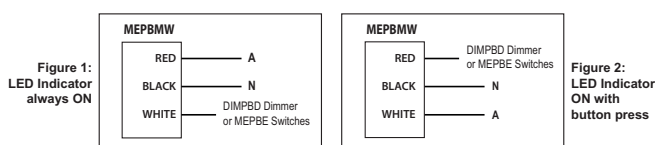
### WHITE, BLACK, SILVER, MATT WHITE & MATT BLACK BUTTONS AVAILABLE:

MEBUMW & MEBUMBK (curved button for Flat Cat),  
MEBUC & MEBUCBK (flat button for Leopard and Snow Leopard),  
MEBUCSV (flat button for Snow Leopard Silver finishes)

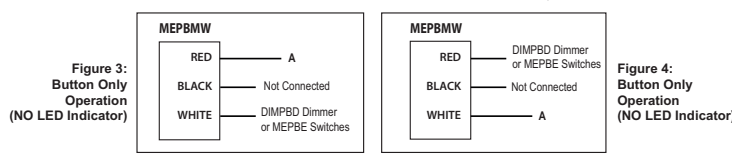
MEBUCMW & MEBUCMBK (flat button for Clouded Leopard matt finishes)

### WIRING INSTRUCTIONS

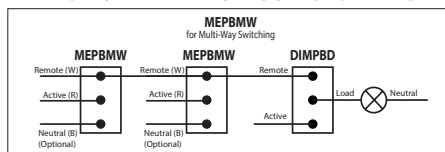
#### WIRING FOR LED AND BUTTON OPERATION - NEUTRAL PRESENT



#### WIRING FOR BUTTON ONLY OPERATION - NO NEUTRAL REQUIRED



#### WIRING MULTIPLE REMOTE BUTTONS WITH DIMPBD DIMMERS



- Multiple Remote Buttons can be used, provided the total remote wiring length does not exceed 50 metres.
- Either LED ON or Button only wiring configurations can be used.

\*The Clipsal brand and associated products are Trademarks of Schneider Electric (Australia) Pty Ltd. and used for reference only.

**Certification Number:** GMA-516333-EA

**GSM Electrical (Australia) Pty Ltd**

Level 2, 142-144 Fullarton Road, Rose Park SA 5067

P: 1300 301 838 F: 1300 301 778 E: service@gsme.com.au

[www.gsme.com.au](http://www.gsme.com.au)



Data Specification Sheet  
September 2023



## MEPBEA



MEERKAT  
MEPBEA

USED IN  
CONJUNCTION WITH:  
MEPBMW Push Button  
Multi-Way Remote  
Dimming and On/Off  
Switching



### BUTTON CAPS:

MEBUMW  
MEBUMBK  
MEBUC  
MEBUCBK  
MEBUCSV  
MEBUCMW  
MEBUCMBK

### Cleaning Guide:

Spraying cleaning products directly on to electrical switches or power points (sockets) is not recommended.

It is important to ensure that switches are turned off before cleaning.

Do not use any cleaning sprays - only wipe down with damp cloth or rub with dry cloth. Do not use an abrasive cloth as it may scratch the plastic.

Do not use harsh chemical cleaners as these can break down the plastic and cause it to crack.



## Push Button Switching

### MEPBEA Push Button, Electronic On/Off Switch, 3-wire Amber LED FEATURES

- Soft touch push button ON/ OFF switch.
- Amber LED indicates device status.
- Returns to OFF after loss of power.
- Compatible with a wide range of load types including wire wound transformers & fan motors.
- Compatible with Trader and Clipsal\* Style wall plates.
- Multi-Way Switching when used in conjunction with the MEPBMW Multi-Way Remote Dimmer & ON/OFF Push Button.
- Supplied with MEBU Gloss White & Gloss Black buttons, suits Puma, Cougar & Flat Cat gloss finishes.

### OPERATING CONDITIONS

- Operating Voltage: 230 – 240V a.c. 50Hz
- Maximum Load: 1200W / 500VA (see table below)
- Maximum Current Capacity: 5A
- Terminals: Screw Terminals suit 0.5mm<sup>2</sup> to 1.5mm<sup>2</sup> stranded cable (bootlace terminal recommended)
- Operating Temperature: 0 to +50 °C
- Compliance Standard: CISPR15, AS/NZS 3100, AS/NZS 60669.2.1

*Note: Operation at temperature, voltage or load outside of the specifications may cause permanent damage to the unit.*

### LOAD COMPATIBILITY

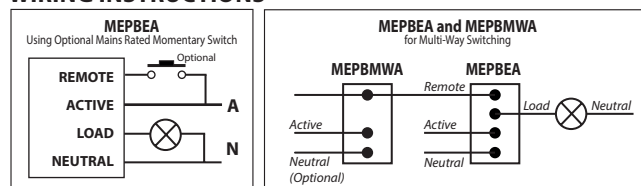
LOAD TYPE	COMPATIBILITY
Incandescent / 240V Halogen	1200W
Fluorescent Tube with Electronic Ballast	500VA
Fluorescent Tube with Iron Core Ballast	500VA
Compact Fluorescent	500VA
Electronic Transformer	500VA
LED	500VA
Wirewound Transformer	500VA
Fan Motors	500VA
Heating Elements	1200W

### WHITE, BLACK, SILVER, MATT WHITE & MATT BLACK BUTTONS AVAILABLE:

MEBUMW & MEBUMBK (curved button for Flat Cat),  
MEBUC & MEBUCBK (flat button for Leopard and Snow Leopard),  
MEBUCSV (flat button for Snow Leopard Silver finishes)  
MEBUCMW & MEBUCMBK (flat button for Clouded Leopard matt finishes)



### WIRING INSTRUCTIONS



Catalogue Number	Description
MEPBEA	Push Button, Electronic On/Off Switch, 3-wire Amber LED
MEBUMW	Curved Button for MEPBE, MEPBMW & DIMPBD, for use with Flat Cat Matt White
MEBUMBK	Curved Button for MEPBE, MEPBMW & DIMPBD for use with Flat Cat Matt Black
MEBUC	Flat Button Gloss White for DIMPBD, MEPBE, MEPBMW for use & best aperture fit with Leopard & Snow Leopard White.
MEBUCBK	Flat Button Gloss Black for DIMPBD, MEPBE, MEPBMW use & best aperture fit with Leopard & Snow Leopard Black.
MEBUCMW	Flat button for MEPBE, MEPBMW & DIMPBD for use & best aperture fit with Clouded Leopard Matt White. Not suitable for Flat Cat.
MEBUCMBK	Flat button for MEPBE, MEPBMW & DIMPBD for use & best aperture fit with Clouded Leopard Matt Black. Not suitable for Flat Cat.

\*The Clipsal brand and associated products are Trademarks of Schneider Electric (Australia) Pty Ltd. and used for reference only.

**Certification Number:** GMA-504067-EA

**GSM Electrical (Australia) Pty Ltd**

Level 2, 142-144 Fullarton Road, Rose Park SA 5067

P: 1300 301 838 F: 1300 301 778 E: service@gsme.com.au

[www.gsme.com.au](http://www.gsme.com.au)



Data Specification Sheet  
Aug 2022



## MEPBMWA



### BUTTON CAPS:

**MEBUMW**  
**MEBUMBK**  
**MEBUC**  
**MEBUCBK**  
**MEBUCSV**  
**MEBUCMW**  
**MEBUCMBK**

### Cleaning Guide:

Spraying cleaning products directly on to electrical switches or power points (sockets) is not recommended.

It is important to ensure that switches are turned off before cleaning.

Do not use any cleaning sprays - only wipe down with damp cloth or rub with dry cloth. Do not use an abrasive cloth as it may scratch the plastic.

Do not use harsh chemical cleaners as these can break down the plastic and cause it to crack.



## Push Button Switching & Dimming

### MEPBMWA Push Button, Multi-Way Remote Dimming and On/Off Switching Amber LED

The MEPBMWA Remote Button enables Multi-Way dimming and ON/OFF switching with the DIMPBDA Digital Dimmer. It can also be used in conjunction with MEPBEA switch for Multi-Way ON/OFF control switching only. An inbuilt LED indicator can be configured two ways by connecting Neutral to the MEPBMWA:

1. The LED indicator can be permanently "ON".
2. Or "ON" while the button is pressed.

The MEPBMWA will operate without neutral connected but the LED indicator will not function. Multiple MEPBMWA push button mechanisms can be connected in parallel to a single DIMPBDA dimmer or a MEPBEA electronic switch, provided the total length of the remote connection does not exceed 50 metres. It operates as a 'slave' button and provides full functionality to the master module that it is connected to.

### LOAD COMPATIBILITY

- For use with MEPBEA or DIMPBDA mechs only (NOT FOR STANDALONE MAINS SWITCHING).

### FEATURES

- Enables Multi-Way dimming and ON/OFF switching for DIMPBDA Digital Dimmers.
- Enables Multi-Way ON/OFF switching for MEPBEA Electronic Switches.
- Neutral not required for button only operation (no illumination).
- Optional LED Indicator operation requires Neutral.
- Suits Trader and Clipsal\* style wall plates.
- Supplied with MEBU Gloss White & Gloss Black buttons, suits Puma, Cougar & Flat Cat gloss finishes.

### OPERATING CONDITIONS

- Operating Voltage: 230 - 240V a.c. 50Hz.
- Power Rating: Based upon connected Dimmer or Electronic Switch.
- Connection Type: Flying leads with bootlace terminals.
- Operating Temperature: 0 to +50 °C.
- Compliance Standard: AS/NZS 60669.2.1, CISPR15.

*Note: Operation at temperature, voltage or load outside of the specifications may cause permanent damage to the unit.*

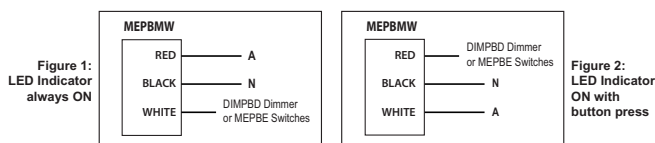
### WHITE, BLACK, SILVER, MATT WHITE & MATT BLACK BUTTONS AVAILABLE:

MEBUMW & MEBUMBK (curved button for Flat Cat),  
MEBUC & MEBUCBK (flat button for Leopard and Snow Leopard),  
MEBUCSV (flat button for Snow Leopard Silver finishes)

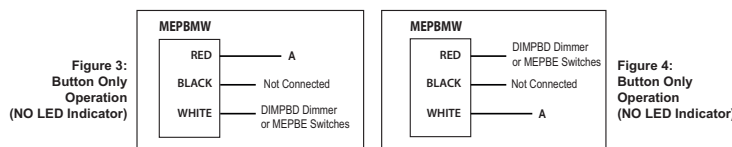
MEBUCMW & MEBUCMBK (flat button for Clouded Leopard matt finishes)

### WIRING INSTRUCTIONS

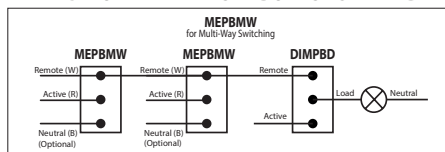
#### WIRING FOR LED AND BUTTON OPERATION - NEUTRAL PRESENT



#### WIRING FOR BUTTON ONLY OPERATION - NO NEUTRAL REQUIRED



#### WIRING MULTIPLE REMOTE BUTTONS WITH DIMPBDA DIMMERS



- Multiple Remote Buttons can be used, provided the total remote wiring length does not exceed 50 metres.
- Either LED ON or Button only wiring configurations can be used.

\*The Clipsal brand and associated products are Trademarks of Schneider Electric (Australia) Pty Ltd. and used for reference only.

**Certification Number:** GMA-516333-EA

**GSM Electrical (Australia) Pty Ltd**

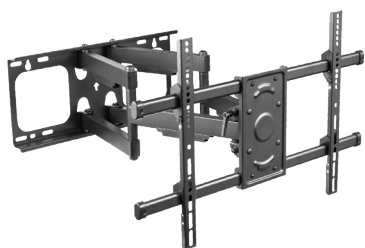
Level 2, 142-144 Fullarton Road, Rose Park SA 5067

P: 1300 301 838 F: 1300 301 778 E: service@gsme.com.au

[www.gsme.com.au](http://www.gsme.com.au)



## METVBFM3790



### Cleaning Guide:

Spraying cleaning products directly on to electrical switches or power points (sockets) is not recommended.

It is important to ensure that switches are turned off before cleaning.

Do not use any cleaning sprays - only wipe down with damp cloth or rub with dry cloth. Do not use an abrasive cloth as it may scratch the plastic.

Do not use harsh chemical cleaners as these can break down the plastic and cause it to crack.



## Meerkat TV Bracket, Full Motion to suit most 37-90 inch TVs

The METVBFM3790 offers heavy duty support for large TVs as well as the ability to swivel, allowing you to achieve any number of desired viewing angles.

The unit suits most TVs measuring between 37 inches and 90 inches.

It boasts a 65kg load rating and is VESA compatible.

### Features and Benefits

- Suitable for most large TV's 37 - 90 inch
- Heavy duty 65kg load rating
- VESA Compatible: 200x200, 300x300, 400x200, 400x400, 600x400
- Built in level adjustment + or -3 degree
- Includes cable management
- Suitable for mounting on Solid Walls or Double Studs (406mm/450mm)

### Specifications:

- Suits 37 – 90" Screen Size
- Max Weight Capacity 65kg
- Max VESA Size 600 x 400
- Profile 69 - 635mm
- Tilt Range +5° to -15°
- Swivel Range +60° to -60°
- Screen Level +3° to -3°
- Double Stud 406mm/450mm
- Product Weight 10.26kg

### EXTRAS INCLUDED



Puma Double Power Point  
PUPP2G



Puma Entertainment plate  
PUENTP3G

### Note:

Please check the weight and mounting hole distance of your TV before selecting a suitable mounting bracket.

Catalogue Number	Description
METVBFM3790	Television Bracket Full Motion Suitable for 37 to 90 inch flat or curved TV's Max weight 65kg

Certification Number: TBC

GSM Electrical (Australia) Pty Ltd

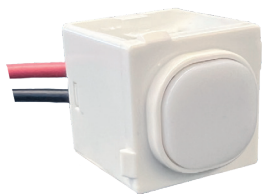
Level 2, 142-144 Fullarton Road, Rose Park SA 5067

P: 1300 301 838 F: 1300 301 778 E: service@gsme.com.au

www.gsme.com.au



## MENLML



### Cleaning Guide:

Spraying cleaning products directly on to electrical switches or power points (sockets) is not recommended.

It is important to ensure that switches are turned off before cleaning.

Do not use any cleaning sprays - only wipe down with damp cloth or rub with dry cloth. Do not use an abrasive cloth as it may scratch the plastic.

Do not use harsh chemical cleaners as these can break down the plastic and cause it to crack.



# Meerkat Nightlight Push Button Mech, Multi Level Control, 230-250V~

Push-Button Multi-level nightlight for access areas, passageways, corridors, utility rooms.

Provides sufficient light to see outlines of objects.

### Made compact for a reason:

- Fits all Trader apertures, switches and power points with removable extra switch mechanisms: Snow Leopard, Clouded leopard, Leopard, Puma, Flat Cat and Cougar ranges.
- Three levels of brightness, push-button activated:

#### Level 1: (Press once)

Brightness: 160 lux max (no lumens. Lumens cannot be measured due to light output too low)

Light temperature: 1800-2000 K warm white

Power: 250V 0.4W 0.00016A

#### Level 2: (Press twice)

Brightness: 440 lux max

Light temperature: 1800-2000 K warm white

Power: 250V 0.4W 0.0016A

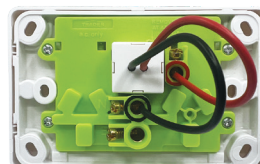
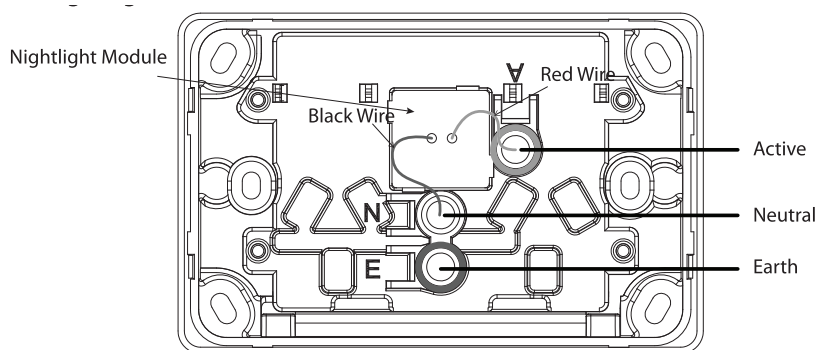
#### Level 3: (Press three times)

Brightness: 800 lux max

Light temperature: 1800-2000 K warm white

Power: 230-250V 0.4W 0.0016A

- Original State, OFF: (Press four times)
- Standby Power in Original State, OFF: 250V 0.3W 0.0012A



Catalogue Number	Description
MENLML	Nightlight Push Button Mech, Multi Level Control, 230-250V~

**Certification Number:** GMA-511872

**GSM Electrical (Australia) Pty Ltd**

Level 2, 142-144 Fullarton Road, Rose Park SA 5067

P: 1300 301 838 F: 1300 301 778 E: service@gsme.com.au

[www.gsme.com.au](http://www.gsme.com.au)



**MESPBT  
MESPP**

Page 1 of 2



**MESPGRMBK**

Speaker Grille Matt Black  
(available as a separate component)



**Cleaning Guide:**

Spraying cleaning products directly on to electrical switches or power points (sockets) is not recommended.

It is important to ensure that switches are turned off before cleaning.

Do not use any cleaning sprays - only wipe down with damp cloth or rub with dry cloth. Do not use an abrasive cloth as it may scratch the plastic.

Do not use harsh chemical cleaners as these can break down the plastic and cause it to crack.



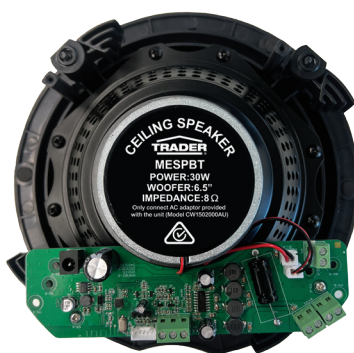
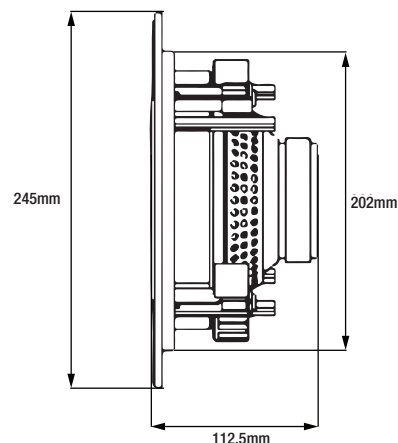
## Meerkat Speaker Set, Bluetooth, 2 Speakers, 1 x Active / 1 x Passive, 6.5 inch 8 Ohm 30 Watts each

Innovative Bluetooth Ceiling Speaker System (MESPBT), allows music and audio streaming wirelessly via phone or tablet devices. Additional passive speakers (MESPP) available separately to expand the system. (Maximum of 4 speakers)

- Easy installation and fast Bluetooth connection (V4.2)
- Amplifier contained within the active speaker.
- Three additional terminals on the active speaker allow expansion to a max 4-speaker system (1 x active speaker plus 3 x passive speakers)
- Speaker grilles can be painted (remove from speaker)
- Can be installed in a fire-rated ceiling, fire-hood required
- Can be hard-wired to CD player and Blu-Ray player devices via RCA cable
- Not suitable for bathroom or wet areas
- 202mm mounting hole
- 30mm thick panel max.

**MESPP Box Content:**

- 1 Master 2-way active speaker with amplifier
- 1 15V dc 220-240V ac power supply
- 1 x 2-way Passive speaker
- 10 metre speaker cable
- 2 speaker grilles
- A cardboard cutting template is included in the box.



MESPP



MESPBT



Catalogue Number	Description
MESPBT	Speaker Bluetooth 6.5 inch 30 Watt, 2 Speakers
MESPP	Speaker Passive 6.5 inch 30 Watts
MESPGRMBK	Speaker Grille Matt Black

**Certification Number:** TBC

**GSM Electrical (Australia) Pty Ltd**

Level 2, 142-144 Fullarton Road, Rose Park SA 5067

P: 1300 301 838 F: 1300 301 778 E: service@gsme.com.au

[www.gsme.com.au](http://www.gsme.com.au)





**MESPBT  
MESPP**

Page 2 of 2



**MESPGRMBK**

Speaker Grille Matt Black  
(available as a separate component)



**Cleaning Guide:**

Spraying cleaning products directly on to electrical switches or power points (sockets) is not recommended.

It is important to ensure that switches are turned off before cleaning.

Do not use any cleaning sprays - only wipe down with damp cloth or rub with dry cloth. Do not use an abrasive cloth as it may scratch the plastic.

Do not use harsh chemical cleaners as these can break down the plastic and cause it to crack.



## Meerkat Speaker Set, Bluetooth, 2 Speakers, 1 x Active / 1 x Passive, 6.5 inch 8 Ohm 30 Watts each

**Active speaker:**

- Power RMS: 30 Watts per speaker
- Power Max approx.: Max peak power 50W
- Impedance: 8 Ohm
- Frequency response: 100Hz-20kHz
- SPL@1W/1m:86dB (Sensitivity: 86dB 1W/1m)
- Speaker type: 2-way
- Woofer Diameter: 165mm (6.5")
- Tweeter: 25.4mm (1") Silk Dome
- Overall Diameter: 245mm
- Depth: 112.5mm
- Mounting hole diameter: 202mm
- Mounting depth from flange: 105mm
- Weight: Approx: 3kg
- Amplifier: Class D
- Stereo Amplifier: Yes
- Output Speaker channels total:  
(1 active + 3 passive)
- Plug power pack input: 220-240V ac 50/60Hz
- Amplifier input from power pack: 15V dc 2A
- Bluetooth System: V4.2 EDR
- Bluetooth range: Up to 10 metres
- Uniquely addressable: Yes
- Auxiliary connection: Yes
- Standby power: Max 1.65W
- Speaker cable length supplied: 10 metres
- IP Rating: N/A
- Speaker cone colour: Black
- Speaker cover colour: White

**Passive speaker:**

- Power RMS: 30 Watt per speaker
- Power Max approx.: Max peak power 50W
- Impedance: 8 Ohm
- Frequency response: 100Hz-20kHz
- SPL@1W/1m: 86dB
- Speaker type: 2-way
- Woofer Diameter: 165mm (6.5")
- Tweeter: 25.4mm (1") Silk Dome
- Overall Diameter: 245mm
- Depth: 112.5mm
- Mounting hole diameter: 202mm
- Mounting depth from flange: 105mm
- Weight: Approx: 3kg
- Auxiliary connection: No
- Speaker cable length supplied: 10 metres
- IP Rating: N/A
- Speaker cone colour: Black
- Speaker cover colour: White

Catalogue Number	Description
MESPBT	Speaker Bluetooth 6.5 inch 30 Watt, 2 Speakers
MESPP	Speaker Passive 6.5 inch 30 Watts
MESPGRMBK	Speaker Grille Matt Black

**Certification Number:** TBC

**GSM Electrical (Australia) Pty Ltd**

Level 2, 142-144 Fullarton Road, Rose Park SA 5067

P: 1300 301 838 F: 1300 301 778 E: service@gsme.com.au

[www.gsme.com.au](http://www.gsme.com.au)

