

Chemist Warehouse Case Study





Case Study:
Chemist Warehouse
 Electrical Contractor:
Miffy Electrical Services
 Trader Electrical Products used:
Hyena

Hanging around Chemist Warehouse

Chemist Warehouse is the number one pharmacy retailer in Australia. There are over 300 stores nationally, all known for the value offer they provide to customers.

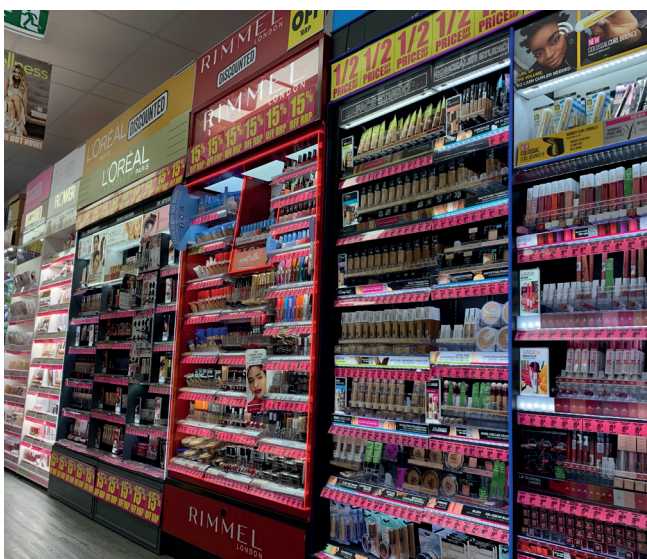
In Victoria, Chemist Warehouse stores are being retrofitted with trader Hyena Suspension sockets. This one pictured is at Bulleen Plaza.

There are well over 100 stores in VIC alone and as each store is refurbished, James Mifsud from Miffy Electrical Services is one of the Electrical contractors called in to upgrade the electrical wiring.

Store layouts are standardised with centralised aisles, each requiring power for displays and LED lighting. Suspended ceilings make it difficult to install fixed power points.

“Hard-wiring with conduit or trunking systems can be very time-consuming and expensive,” says James. “That’s where suspension sockets are a much easier way to go. We wire in flex cable from the 10A suspension socket straight into the designated circuits, using Jack chain and cable ties for support. By wiring these circuits into the lighting contractors, customers can switch these on or off at the light switch. The result is very neat and inexpensive.”

Hyena suspension sockets are very simple to install and if the store layout changes in the future, repositioning is straightforward. This is a big advantage when each store would typically have 10-15 sockets installed.



Store layouts are standardised with centralised aisles.



Hyena suspension sockets provide versatility and functionality.



Hyena sockets supplied by Ben Massloch, AWM Doncasterhere with Peter Burgess, Major Projects & Partners - VIC, GSM Electrical



The main housing contains a solid loop for chain or wire rope connection, to provide support and strain relief for electrical cabling.



Providing overhead power in convenient places above the aisle, (benches or work areas) where other fixed sockets cannot be located.

Hyena First Fix Accessories





Partner with Trader on your next build

Partner with Trader on your next build If you have a similar project that you would like discuss with Trader, please contact us on the details below.

Visit: gsme.com.au

Email: service@gsme.com.au

Call: 1300 301 838

For Major Projects:

Pippa Hemmings

Director, Major Partners and Projects

Pippa.hemmings@gsme.com.au

M 0451 028 484 | T (08) 8122 2382

