

**TRADER**<sup>®</sup>

100 Years of Gerard Electrical Tradition

# BUFFALO <sup>TM</sup> INDUSTRIAL SWITCHGEAR



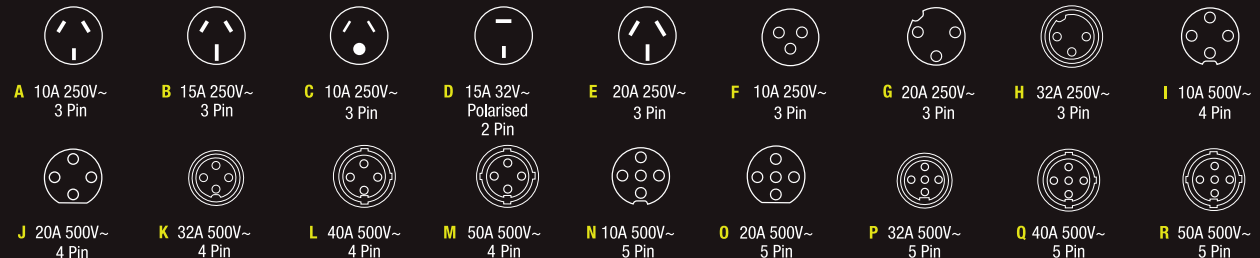
**INCLUDES**  
Buffalo Chemical Resistant  
For long life performance

## CONTENTS

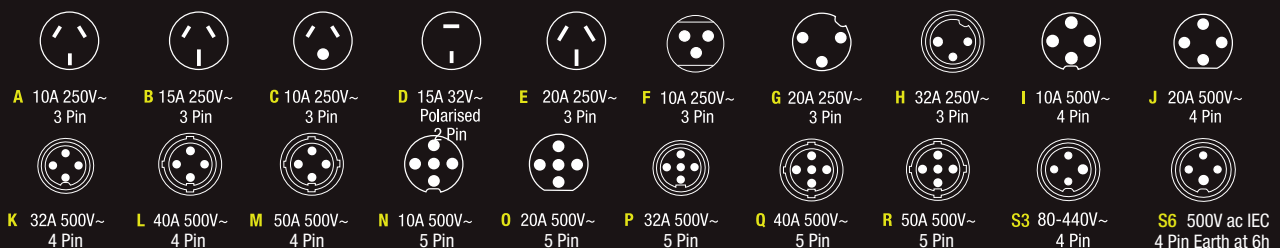
|   |       |
|---|-------|
| Combination Switched Sockets . . . . .  | 5     |
| Combination Switched Sockets and RCD . . . . .                                    | 6     |
| Heavy Duty Switches . . . . .   | 7     |
| Key Lock Switches . . . . .   | 8     |
| Appliance Inlets . . . . .  | 9     |
| Auto-Switched and Heavy Duty Sockets . . . . .                                    | 10    |
| Extension Sockets . . . . .   | 11    |
| Angled Extension Sockets . . . . .  | 12    |
| Plugs . . . . .   | 13    |
| Angled Plugs . . . . .  | 14    |
| Heavy Duty Push Buttons and Enclosures . . . . .                                  | 15    |
| Accessories . . . . .   | 16    |
| Less Enclosures . . . . .   | 17-18 |
| Chemical Resistant Grey Combinations Switched Sockets and Switches . . . . .      | 20    |
| Chemical Resistant Grey Enclosures, lids and Sockets . . . . .                    | 21    |
| Chemical Resistant Grey Extensions Sockets . . . . .                              | 22    |
| Chemical Resistant Grey Plugs . . . . .   | 23    |
| Chemical Resistant Orange Combinations Switched Sockets and Switches . . . . .    | 24    |
| Chemical Resistant Orange Enclosures, Lids and Sockets . . . . .                  | 25    |
| Chemical Resistant White Combinations Switched Sockets and Switches . . . . .     | 26    |
| Chemical Resistant White Enclosures, Lids, Sockets and Mounting Bracket . . . . . | 27    |
| Chemical Resistant Orange and White Extension Sockets . . . . .                   | 28    |
| Chemical Resistant Orange and White Plugs . . . . .                               | 29    |
| Alternatives . . . . .  | 30-31 |

*Please check availability. Some future release items may not be ready at time of print*

### Plug Pin Configurations



### Socket Pin Configurations





# BUFFALO

## Industrial Switchgear

A Comprehensive Backward Compatible Range of Industrial Switchgear which performs in the dust and wet, with the strength, safety and performance of a Buffalo.

**It's time to get on board with Buffalo, Australia's fastest growing range of industrial switchgear.**

- Super quality, engineered for contractors
- Great range including chemical resistant orange, grey and white
- Backwards compatible and interchangeable with other switchgear brands
- Top representation & back-up in electrical wholesalers, sales representation and customer relations
  - Excellent value backed by a solid 10 Year warranty.

**So get onboard and get buff with Buffalo.**

**TRADER**<sup>®</sup>

100 Years of Gerard Electrical Tradition

## Trader's Buffalo includes a variety of exciting features and benefits:



### A NEW LOOK

Instantly recognisable as Buffalo, mix and match with other brands



### BLACK BRIDGE PIECES

On switched sockets sit nice and snug



### BREATHER / BREATHER DRAIN

Prevents moisture build up inside enclosures.



### LOCKING FACILITY

On BUSW products, designed around standard 70mm padlocks



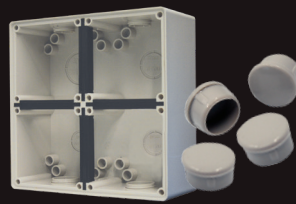
### NEW APPLIANCE INLETS

Designed to fit various plug designs



### EXTRA DEEP SINGLE BACKBOX

eg. BUBB1GD for rotary cam switches



### BACK BOXES & CAPS

Made from PVC, better for gluing in conduit



Add Neutral wire to make double pole

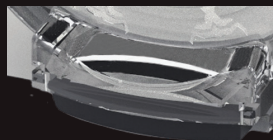
### SINGLE POLE COMBINATION SOCKETS

Supplied with a double pole switch to allow easy upgrade



### O-RINGS

On backbox threaded entries to assist in sealing



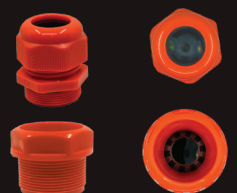
### SOCKET LATCHES

Extra wide and easy to grip



### DIN COVERS

With neon indicators. Has extra-long wiring tails for better flexibility

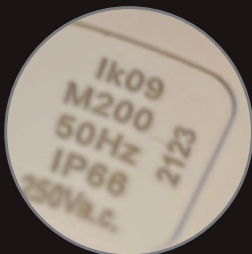


### TWO CORD GLAND SIZES

Larger gland entry supplied with 32-50A plugs

The IK Impact Protection rating marked on our switchgear indicates the level to which the Buffalo enclosure has been tested to.

Please use this impact resistant chart for reference:



### STRONG CONSTRUCTION

IK09 impact rating on standard grey switches



### BUILT TOUGH

Fascias manufactured from tough impact resistant polycarbonate while back boxes are moulded in durable PVC.

| IK RATING | IMPACT TEST DETAILS                               |
|-----------|---|
| IK00      | No protection against mechanical impact           |
| IK01      | Impact by a 0.25kg mass dropped from 56mm height  |
| IK02      | Impact by a 0.25kg mass dropped from 80mm height  |
| IK03      | Impact by a 0.25kg mass dropped from 140mm height |
| IK04      | Impact by a 0.25kg mass dropped from 200mm height |
| IK05      | Impact by a 0.25kg mass dropped from 280mm height |
| IK06      | Impact by a 0.25kg mass dropped from 400mm height |
| IK07      | Impact by a 0.5kg mass dropped from 400mm height  |
| IK08      | Impact by a 1.7 kg mass dropped from 300mm height |
| IK09      | Impact by a 5kg mass dropped from 200mm height    |
| IK10      | Impact by a 5kg mass dropped from 400mm height    |



| Combination Switch Socket Series                         |          |   | Qty Per Box |
|--|----------|---|-------------|
| <b>BUC310</b><br>*Clipsal 56C310-GY<br>^NHP ISOC310PG    | <b>A</b> | Combination Switched Socket Outlet IP66 10A 250V ac 3 Flat Pin Grey             | 1           |
| <b>BUC310L</b><br>*Clipsal 56C310L-GY<br>^NHP ISOC310LPG | <b>C</b> | Combination Switched Socket Outlet IP66 10A 250V ac 2 Flat and 1 Round Pin Grey | 1           |
| <b>BUC315</b><br>*Clipsal 56C315-GY<br>^NHP ISOC315PG    | <b>B</b> | Combination Switched Socket Outlet IP66 15A 250V ac 3 Flat Pin Grey             | 1           |
| <b>BUC320</b><br>*Clipsal 56C320-GY<br>^NHP ISOC320PG    | <b>G</b> | Combination Switched Socket Outlet IP66 20A 250V ac 3 Flat Pin Grey             | 1           |
| <b>BUC320F</b><br>*Clipsal 56C320F-GY<br>^NHP ISOC320FPG | <b>E</b> | Combination Switched Socket Outlet IP66 20A 250V ac 3 Round Pin Grey            | 1           |
| <b>BUC332</b><br>*Clipsal 56C332-GY<br>^NHP ISOC332PG    | <b>H</b> | Combination Switched Socket Outlet IP66 32A 250V ac 3 Round Pin Grey            | 1           |
| <b>BUC410</b><br>*Clipsal 56C410-GY<br>^NHP ISOC410PG    | <b>I</b> | Combination Switched Socket Outlet IP66 10A 500V ac 4 Pin Grey                  | 1           |
| <b>BUC420</b><br>*Clipsal 56C420-GY<br>^NHP ISOC420PG    | <b>J</b> | Combination Switched Socket Outlet IP66 20A 500V ac 4 Round Pin Grey            | 1           |
| <b>BUC432</b><br>*Clipsal 56C432-GY<br>^NHP ISOC432PG    | <b>K</b> | Combination Switched Socket Outlet IP66 32A 500V ac 4 Round Pin Grey            | 1           |
| <b>BUC440</b><br>*Clipsal 56C440-GY<br>^NHP ISOC440PG    | <b>L</b> | Combination Switched Socket Outlet IP66 40A 500V ac 4 Round Pin Grey            | 1           |
| <b>BUC450</b><br>*Clipsal 56C450-GY<br>^NHP ISOC450PG    | <b>M</b> | Combination Switched Socket Outlet IP66 50A 500V ac 4 Round Pin Grey            | 1           |
| <b>BUC510</b><br>*Clipsal 56C510-GY<br>^NHP ISOC510PG    | <b>N</b> | Combination Switched Socket Outlet IP66 10A 500V ac 5 Round Pin Grey            | 1           |
| <b>BUC520</b><br>*Clipsal 56C520-GY<br>^NHP ISOC520PG    | <b>O</b> | Combination Switched Socket Outlet IP66 20A 500V ac 5 Round Pin Grey            | 1           |
| <b>BUC532</b><br>*Clipsal 56C532-GY<br>^NHP ISOC532PG    | <b>P</b> | Combination Switched Socket Outlet IP66 32A 500V ac 5 Round Pin Grey            | 1           |
| <b>BUC540</b><br>*Clipsal 56C540-GY<br>^NHP ISOC540PG    | <b>Q</b> | Combination Switched Socket Outlet IP66 40A 500V ac 5 Round Pin Grey            | 1           |
| <b>BUC550</b><br>*Clipsal 56C550-GY<br>^NHP ISOC550PG    | <b>R</b> | Combination Switched Socket Outlet IP66 50A 500V ac 5 Round Pin Grey            | 1           |

**ALSO AVAILABLE AS LE "LESS ENCLOSURE" (BACK BOX) - SEE BACK OF BUFFALO SECTION**

**▲ Note: See Socket Pin Configuration diagrams on page 2**



Data Spec  
Sheets



See Trade  
Prices



Web link to  
full range

## COMBINATION SWITCHED SOCKETS AND RCD



| Combination Switch Socket with RCD (Residual Current Device) Series                  |   | Qty Per Box |
|--|---|-------------|
| <b>BUC310RC30N</b><br><small>*Clipsal - 56SC310RC-GY<br/>*NHP - ISOC310RCDPG</small> | <b>A</b> Combination Switched Socket Outlet IP66 10A 250V ac 3 Flat Pin Grey RCD 30mA BUBB4G Neon Indicator | 1           |
| <b>BUC315RC30N</b><br><small>*Clipsal - 56SC315RC-GY<br/>*NHP - ISOC315RCDPG</small> | <b>B</b> Combination Switched Socket Outlet IP66 15A 250V ac 3 Flat Pin Grey RCD 30mA BUBB4G Neon Indicator | 1           |
| <b>BUC320RC30N</b><br><small>*NHP - ISOC320RCDPG</small>                             | <b>G</b> Combination Switched Socket Outlet IP66 20A 250V ac 3 Pin Grey RCD 30mA BUBB4G Neon Indicator      | 1           |
| <b>BUC320FRC30N</b>  | <b>E</b> Combination Switched Socket Outlet IP66 20A 250V ac 3 Flat Pin Grey RCD 30mA BUBB4G Neon Indicator | 1           |
| <b>BUC332RC30N</b><br><small>*NHP - ISOC332RCDPG</small>                             | <b>H</b> Combination Switched Socket Outlet IP66 32A 250V ac 3 Pin Grey RCD 30mA BUBB4G Neon Indicator      | 1           |
| <b>BUC510RC30N</b><br><small>*Clipsal - 56C510RC-GY<br/>*NHP - ISOC510RCDPG</small>  | <b>N</b> Combination Switched Socket Outlet IP66 10A 500V ac 5 Pin Grey RCD 30mA BUBB4G Neon Indicator      | 1           |
| <b>BUC520RC30N</b><br><small>*Clipsal - 56C520RC-GY<br/>*NHP - ISOC520RCDPG</small>  | <b>O</b> Combination Switched Socket Outlet IP66 20A 500V ac 5 Pin Grey RCD 30mA BUBB4G Neon Indicator      | 1           |
| <b>BUC532RC30N</b><br><small>*Clipsal - 56C532RC-GY<br/>*NHP - ISOC532RCDPG</small>  | <b>P</b> Combination Switched Socket Outlet IP66 32A 500V ac 5 Pin Grey RCD 30mA BUBB4G Neon Indicator      | 1           |
| <b>BUC540RC30N</b><br><small>*Clipsal - 56C540RC-GY<br/>*NHP - ISOC540RCDPG</small>  | <b>Q</b> Combination Switched Socket Outlet IP66 40A 250V ac 5 Pin Grey RCD 30mA BUBB4G Neon Indicator      | 1           |
| <b>BUC550RC30N</b><br><small>*NHP - ISOC550RCDPG</small>                             | <b>P</b> Combination Switched Socket Outlet IP66 50A 500V ac 5 Pin Grey RCD 30mA BUBB4G Neon Indicator      | 1           |

**▲ Note: See Socket Pin Configuration diagrams on page 2**

Note: These units are made to order with up to 4-week lead time.  
Please enquire for availability, and pricing.



| Heavy Duty Residual Current Device Series               |   | Qty Per Box |
|---|---|-------------|
| <b>BURCD20DP30</b><br><small>*Clipsal - 56RC-GY</small> | Residual Current Device IP66 20A 230V 240V ac 2 Pole 30mA 3kA | 1           |



## HEAVY DUTY SWITCHES



| Heavy Duty Switch Series                                       |   | Qty Per Box |
|--|---|-------------|
| <b>BUSW210</b><br>*Clipsal - 56SW210/2-GY<br>*NHP - ISOSW110PG | Switch Disconnector IP66 10A 500V ac 2 Pole Grey                      | 1           |
| <b>BUSW220</b><br>*Clipsal - 56SW220-GY<br>*NHP - ISOSW120PG   | Switch Disconnector IP66 20A 500V ac 2 Pole Grey                      | 1           |
| <b>BUSW220CO</b><br>*Clipsal - 56SW220CO-GY                    | Switch Changeover IP66 20A 500V ac 2 Pole Grey                        | 1           |
| <b>BUSW232</b><br>*Clipsal - 56SW232-GY<br>*NHP - ISOSW132PG   | Switch Disconnector IP66 32A 500V ac 2 Pole Grey                      | 1           |
| <b>BUSW310</b><br>*Clipsal - 56SW310-GY<br>*NHP - ISOSW310PG   | Switch Disconnector IP66 10A 500V ac 3 Pole Grey                      | 1           |
| <b>BUSW320</b><br>*Clipsal - 56SW320-GY<br>*NHP - ISOSW320PG   | Switch Disconnector IP66 20A 500V ac 3 Pole Grey                      | 1           |
| <b>BUSW320R</b><br>*Clipsal - 56SW320R-GY                      | Switch Forward Reverse IP66 20A 500V ac 3 Pole Grey                   | 1           |
| <b>BUSW332</b><br>*Clipsal - 56SW332-GY<br>*NHP - ISOSW332PG   | Switch Disconnector IP66 32A 500V ac 3 Pole Grey                      | 1           |
| <b>BUSW363</b><br>*Clipsal - 56SW363-GY                        | Switch Disconnector IP66 63A 500V ac 3 Pole Grey                      | 1           |
| <b>BUSW420</b><br>*Clipsal - 56SW420-GY<br>*NHP - ISOSW420PG   | Switch Disconnector IP66 20A 500V ac 4 Pole Grey                      | 1           |
| <b>BUSW432</b><br>*Clipsal - 56SW432-GY<br>*NHP - ISOSW432PG   | Switch Disconnector IP66 32A 500V ac 4 Pole Grey                      | 1           |
| <b>BUSW463</b><br>*Clipsal - 56SW463-GY                        | Switch Disconnector IP66 63A 500V ac 4 Pole Deep Enclosure 100mm Grey | 1           |

**ALSO AVAILABLE AS LE "LESS ENCLOSURE" (BACK BOX) - SEE BACK OF BUFFALO SECTION**



| Heavy Duty 2 Way Switch Series             |   | Qty Per Box |
|--|---|-------------|
| <b>BUSW1102</b><br>*Clipsal - 56SW110/2-gy | Switch 2 Way IP66 10A 250V ac 1 Pole Grey | 1           |
| <b>BUSW1202</b>                            | Switch 2 Way IP66 20A 250V ac 1 Pole Grey | 1           |



| Heavy Duty Sunset Switch Series      |  | Qty Per Box |
|--------------------------------------|--|-------------|
| <b>BUSUNSW</b><br>*Clipsal - 56SSR/3 | Sunset Switch Weatherproof IP66 16A 220V 240V ac 250W LED Rated 3 Wire Programmable 1hr Dusk to Dawn | 1           |



Data Spec  
Sheets



See Trade  
Prices



Web link to  
full range

## KEY LOCK SWITCHES



| Heavy Duty Key Lock Switch Series   |  | Qty Per Box |
|---|--|-------------|
| <b>BUSW210K1</b>  | Switch Disconnecter IP66 10A 500V ac 2 Pole Key Lock OFF Grey  | 1           |
| <b>BUSW210K2</b>  | Switch Disconnecter IP66 10A 500V ac 2 Pole Key Lock OFF ON Grey                                       | 1           |
| <b>BUSW220K1</b><br><small>*Clipsal - 56K1SW220<br/>^NHP - ISOK1SW120PG</small> | Switch Disconnecter IP66 20A 500V ac 2 Pole Key Lock OFF Grey  | 1           |
| <b>BUSW220K2</b><br><small>^NHP - ISOK2SW120PG</small>                          | Switch Disconnecter IP66 20A 500V ac 2 Pole Key Lock OFF ON Grey                                       | 1           |
| <b>BUSW320K1</b><br><small>*Clipsal - 56K1SW320<br/>^NHP - ISOK1SW320PG</small> | Switch Disconnecter IP66 20A 500V ac 3 Pole Key Lock OFF Grey  | 1           |
| <b>BUSW320K2</b><br><small>*Clipsal - 56K2SW320<br/>^NHP - ISOK2SW320PG</small> | Switch Disconnecter IP66 20A 500V ac 3 Pole Key Lock OFF ON Grey                                       | 1           |
| <b>BUSW332K1</b><br><small>*Clipsal - 56K1SW332<br/>^NHP - ISOK1SW332PG</small> | Switch Disconnecter IP66 32A 500V ac 3 Pole Key Lock OFF Grey  | 1           |
| <b>BUSW332K2</b><br><small>*Clipsal - 56K2SW332<br/>^NHP - ISOK2SW332PG</small> | Switch Disconnecter IP66 32A 500V ac 3 Pole Key Lock OFF ON Grey                                       | 1           |
| <b>SKCUSTOMKEY</b>  | Custom Key Barrel Service for Trader Buffalo Keylock Switches - Contact Trader Customer Relations Team | 1           |

## NEW Buffalo Key Lock Switches

**BUSW Key Lock Switch Series** comes as standard in various current and phase configurations and features a lock-off function, indicated by the **K1** code at the end of the product code.

When the key is removed in the OFF position, the switch locks to prevent unintentional operation. These switches also include an overriding padlock-off facility, consistent with the standard Buffalo range.

In addition to the K1 model, the range includes a K2 variant that allows the key to be removed in either the on or off position, preventing unintentional operation.

To change modes, the key must be inserted.

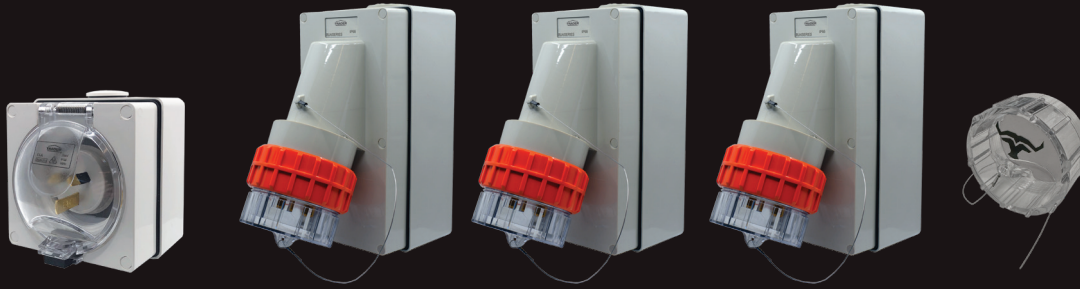
The key switch system uses barrels for either common key systems or random configurations, depending on requirements.

These specifications must be provided when ordering through the Customer Service Team.

Special key combinations may have longer lead times.

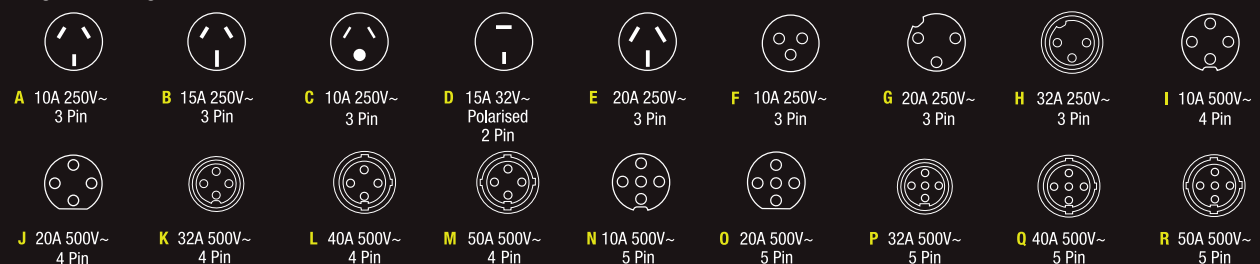


## APPLIANCE INLETS



| Appliance Inlet Series  |                                       |   | Qty Per Box |
|---|---------------------------------------|---|-------------|
| <b>BUAI310</b><br><small>*Clipsal - 56AI310-GY<br/>^NHP - ISOAI310PG</small>          | <b>A</b>                              | Appliance Inlet IP66 10A 250V ac Grey             | 1           |
| <b>BUAI315</b><br><small>*Clipsal - 56AI315-GY<br/>^NHP - ISOAI315PG</small>          | <b>B</b>                              | Appliance Inlet IP66 15A 250V ac Grey             | 1           |
| <b>BUAI320</b><br><small>*Clipsal - 56AI320-GY<br/>^NHP - ISOAI320PG</small>          | <b>G</b>                              | Appliance Inlet IP66 20A 250V ac 3 Round Pin Grey | 1           |
| <b>BUAI332</b><br><small>*Clipsal - 56AI332-GY<br/>^NHP - ISOAI332PG</small>          | <b>H</b>                              | Appliance Inlet IP66 32A 250V ac 3 Round Pin Grey | 1           |
| <b>BUAI410</b><br><small>*Clipsal - 56AI410-GY<br/>^NHP - ISOAI410PG</small>          | <b>I</b>                              | Appliance Inlet IP66 10A 500V ac 4 Round Pin Grey | 1           |
| <b>BUAI420</b><br><small>*Clipsal - 56AI420-GY<br/>^NHP - ISOAI420PG</small>          | <b>J</b>                              | Appliance Inlet IP66 20A 500V ac 4 Round Pin Grey | 1           |
| <b>BUAI432</b><br><small>*Clipsal - 56AI432-GY<br/>^NHP - ISOAI432PG</small>          | <b>K</b>                              | Appliance Inlet IP66 32A 500V ac 4 Round Pin Grey | 1           |
| <b>BUAI440</b><br><small>^NHP - ISOAI440PG</small>                                    | <b>L</b>                              | Appliance Inlet IP66 40A 500V ac 4 Round Pin Grey | 1           |
| <b>BUAI450</b><br><small>*Clipsal - 56AI450-GY<br/>^NHP - ISOAI450PG</small>          | <b>M</b>                              | Appliance Inlet IP66 50A 500V ac 4 Round Pin Grey | 1           |
| <b>BUAI510</b><br><small>*Clipsal - 56AI510-GY<br/>^NHP - ISOAI510PG</small>          | <b>N</b>                              | Appliance Inlet IP66 10A 500V ac 5 Round Pin Grey | 1           |
| <b>BUAI520</b><br><small>*Clipsal - 56AI520-GY<br/>^NHP - ISOAI520PG</small>          | <b>O</b>                              | Appliance Inlet IP66 20A 500V ac 5 Round Pin Grey | 1           |
| <b>BUAI532</b><br><small>*Clipsal - 56AI532-GY<br/>^NHP - ISOAI532PG</small>          | <b>P</b>                              | Appliance Inlet IP66 32A 500V ac 5 Round Pin Grey | 1           |
| <b>BUAI540</b><br><small>*Clipsal - 56AI540-GY<br/>^NHP - ISOAI540PG</small>          | <b>Q</b>                              | Appliance Inlet IP66 40A 500V ac 5 Round Pin Grey | 1           |
| <b>BUAI550</b><br><small>*Clipsal - 56AI550-GY<br/>^NHP - ISOAI550PG</small>          | <b>R</b>                              | Appliance Inlet IP66 50A 500V ac 5 Round Pin Grey | 1           |
| <b>ALSO AVAILABLE AS LE "LESS ENCLOSURE" (BACK BOX) - SEE BACK OF BUFFALO SECTION</b> |                                       |   |             |
| <b>BUAICAP</b><br><small>*Clipsal - 56PC2<br/>^NHP - 3PS9PC</small>                   | Appliance Inlet Cap for Buffalo Range |   | 12          |

### Plug Pin Configurations





Data Spec  
Sheets



See Trade  
Prices



Web link to  
full range

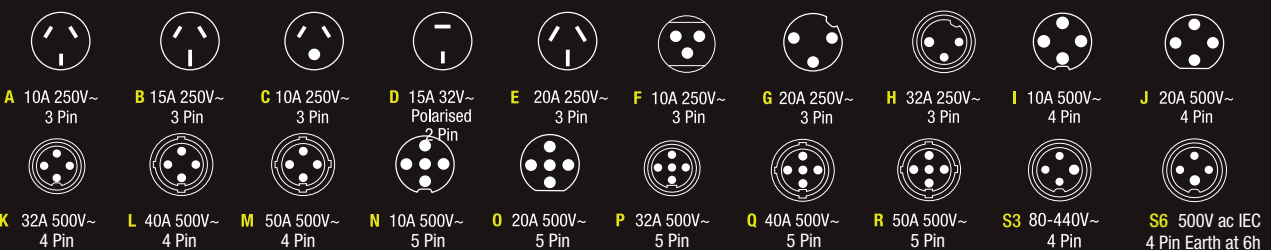
## AUTO-SWITCHED AND HEAVY DUTY SOCKETS



| Sockets Auto-Switched Series  |           |   | Qty Per Box |
|---|-----------|---|-------------|
| <b>BUSOAU310</b><br><small>*Clipsal - 56SO310A-GY</small>                       | <b>A</b>  | Socket Auto Switched IP66 10A 250V ac 3 Flat Pin Grey   | 1           |
| <b>BUSOAU315</b><br><small>*Clipsal - 56SO315A-GY</small>                       | <b>B</b>  | Socket Auto Switched IP66 15A 250V ac 3 Flat Pin Grey   | 1           |
| Sockets Heavy Duty Series   |           |   |             |
| <b>BUSO215P32</b><br><small>*Clipsal - 56SO215/32-GY</small>                    | <b>D</b>  | Socket Outlet IP66 15A 32V ac 2 Pin Polarised Grey  | 1           |
| <b>BUSO310</b><br><small>*Clipsal - 56SO310-L-GY<br/>*NHP - ISOSO310PG</small>  | <b>A</b>  | Socket Outlet IP66 10A 250V ac 3 Flat Pin Grey  | 1           |
| <b>BUSO310L</b><br><small>*Clipsal - 56SO310L-GY<br/>*NHP - ISOSO310LPG</small> | <b>C</b>  | Socket Outlet IP66 10A 250V ac 2 Flat & 1 Round Pin Grey  | 1           |
| <b>BUSO310RP</b><br><small>*Clipsal - 56SO310RP-GY</small>                      | <b>F</b>  | Socket Outlet IP66 10A 250V ac 3 Round Pin Grey   | 1           |
| <b>BUSO315</b><br><small>*Clipsal - 56SO315-GY<br/>*NHP - ISOSO315PG</small>    | <b>B</b>  | Socket Outlet IP66 15A 250V ac 3 Flat Pin Grey  | 1           |
| <b>BUSO320</b><br><small>*Clipsal - 56SO320-GY<br/>*NHP - ISOSO320PG</small>    | <b>E</b>  | Socket Outlet IP66 20A 250V ac 3 Round Pin Grey   | 1           |
| <b>BUSO320F</b><br><small>*Clipsal - 56SO320F-GY<br/>*NHP - ISOSO320FPG</small> | <b>G</b>  | Socket Outlet IP66 20A 250V ac 3 Flat Pin Grey  | 1           |
| <b>BUSO332</b><br><small>*Clipsal - 56SO332-GY<br/>*NHP - ISOSO332PG</small>    | <b>H</b>  | Socket Outlet IP66 32A 250V ac 3 Round Pin Grey   | 1           |
| <b>BUSO410</b><br><small>*Clipsal - 56SO410-GY</small>                          | <b>I</b>  | Socket Outlet IP66 10A 500V ac 4 Round Pin Grey   | 1           |
| <b>BUSO420</b><br><small>*Clipsal - 56SO420-GY<br/>*NHP - ISOSO420PG</small>    | <b>J</b>  | Socket Outlet IP66 20A 500V ac 4 Round Pin Grey   | 1           |
| <b>BUSO432</b><br><small>*Clipsal - 56SO432-GY<br/>*NHP - ISOSO432PG</small>    | <b>K</b>  | Socket Outlet IP66 32A 500V ac 4 Round Pin Grey   | 1           |
| <b>BUSO432E3HLE</b><br><small>*Clipsal - 67CSC432/3</small>                     | <b>S3</b> | Socket Outlet IP66 32A 380 440V ac 4 Pin IEC60309 Earth 3 Hour Clock Position Grey Less Enclosure | 1           |
| <b>BUSO432E6HLE</b>   | <b>S6</b> | Socket Outlet IP66 32A 380 440V ac 4 Pin IEC60309 Earth 6 Hour Clock Position Grey Less Enclosure | 1           |
| <b>BUSO440</b><br><small>*Clipsal - 56SO440-GY<br/>*NHP - ISOSO440PG</small>    | <b>L</b>  | Socket Outlet IP66 40A 500V ac 4 Round Pin Grey   | 1           |
| <b>BUSO450</b><br><small>*Clipsal - 56SO450-GY<br/>*NHP - ISOSO450PG</small>    | <b>M</b>  | Socket Outlet IP66 50A 500V ac 4 Round Pin Grey   | 1           |
| <b>BUSO510</b><br><small>*Clipsal - 56SO510-GY<br/>*NHP - ISOSO510PG</small>    | <b>N</b>  | Socket Outlet IP66 10A 500V ac 5 Round Pin Grey   | 1           |
| <b>BUSO520</b><br><small>*Clipsal - 56SO520-GY<br/>*NHP - ISOSO520PG</small>    | <b>O</b>  | Socket Outlet IP66 20A 500V ac 5 Round Pin Grey   | 1           |
| <b>BUSO532</b><br><small>*Clipsal - 56SO532-GY<br/>*NHP - ISOSO532PG</small>    | <b>P</b>  | Socket Outlet IP66 32A 500V ac 5 Round Pin Grey   | 1           |
| <b>BUSO540</b><br><small>*Clipsal - 56SO540-GY<br/>*NHP - ISOSO540PG</small>    | <b>Q</b>  | Socket Outlet IP66 40A 500V ac 5 Round Pin Grey   | 1           |
| <b>BUSO550</b><br><small>*Clipsal - 56SO550-GY<br/>*NHP - ISOSO550PG</small>    | <b>R</b>  | Socket Outlet IP66 50A 500V ac 5 Round Pin Grey   | 1           |

ALSO AVAILABLE AS LE "LESS ENCLOSURE" (BACK BOX) - SEE BACK OF BUFFALO SECTION

### Socket Pin Configurations



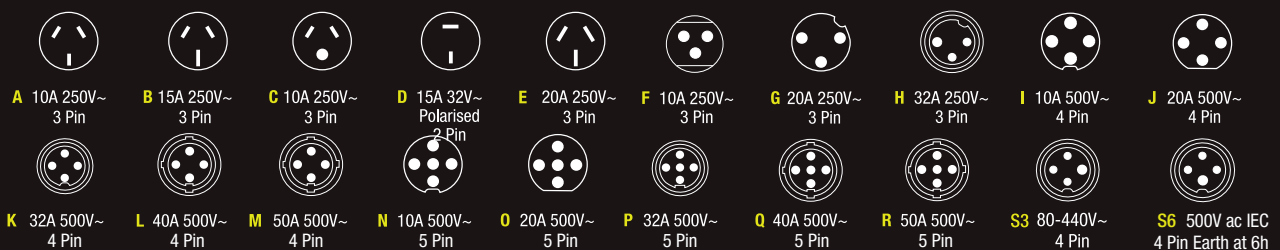


## EXTENSION SOCKETS



| Socket Extension Cord Series  |          |   | Qty Per Box |
|---|----------|---|-------------|
| <b>BUEXO310</b><br><small>*Clipsal - 56CSC310-EO<br/>^NHP - ISOEX310P</small> | <b>A</b> | Socket Extension Cord IP66 10A 250V ac 3 Flat Pin Orange  | 1           |
| <b>BUEXO315</b><br><small>*Clipsal - 56CSC315-EO<br/>^NHP - ISOEX315P</small> | <b>B</b> | Socket Extension Cord IP66 15A 250V ac 3 Flat Pin Orange  | 1           |
| <b>BUEXO320</b><br><small>*Clipsal - 56CSC320-EO<br/>^NHP - ISOEX320P</small> | <b>E</b> | Socket Extension Cord IP66 20A 250V ac 3 Round Pin Orange | 1           |
| <b>BUEXO320F</b>  | <b>G</b> | Socket Extension Cord IP66 20A 250V ac 3 Flat Pin Orange  | 1           |
| <b>BUEXO332</b><br><small>*Clipsal - 56CSC332-EO<br/>^NHP - ISOEX332P</small> | <b>H</b> | Socket Extension Cord IP66 32A 250V ac 3 Round Pin Orange | 1           |
| <b>BUEXO410</b><br><small>*Clipsal - 56CSC410-EO<br/>^NHP - ISOEX410P</small> | <b>I</b> | Socket Extension Cord IP66 10A 500V ac 4 Round Pin Orange | 1           |
| <b>BUEXO420</b><br><small>*Clipsal - 56CSC420-EO<br/>^NHP - ISOEX420P</small> | <b>J</b> | Socket Extension Cord IP66 20A 500V ac 4 Round Pin Orange | 1           |
| <b>BUEXO432</b><br><small>*Clipsal - 56CSC432-EO<br/>^NHP - ISOEX432P</small> | <b>K</b> | Socket Extension Cord IP66 32A 500V ac 4 Round Pin Orange | 1           |
| <b>BUEXO440</b><br><small>*Clipsal - 56CSC440-EO<br/>^NHP - ISOEX440P</small> | <b>L</b> | Socket Extension Cord IP66 40A 500V ac 4 Round Pin Orange | 1           |
| <b>BUEXO450</b><br><small>*Clipsal - 56CSC450-EO<br/>^NHP - ISOEX450P</small> | <b>M</b> | Socket Extension Cord IP66 50A 500V ac 4 Round Pin Orange | 1           |
| <b>BUEXO510</b><br><small>*Clipsal - 56CSC510-EO<br/>^NHP - ISOEX510P</small> | <b>N</b> | Socket Extension Cord IP66 10A 500V ac 5 Round Pin Orange | 1           |
| <b>BUEXO520</b><br><small>*Clipsal - 56CSC520-EO<br/>^NHP - ISOEX520P</small> | <b>O</b> | Socket Extension Cord IP66 20A 500V ac 5 Round Pin Orange | 1           |
| <b>BUEXO532</b><br><small>*Clipsal - 56CSC532-EO<br/>^NHP - ISOEX532P</small> | <b>P</b> | Socket Extension Cord IP66 32A 500V ac 5 Round Pin Orange | 1           |
| <b>BUEXO540</b><br><small>*Clipsal - 56CSC540-EO<br/>^NHP - ISOEX540P</small> | <b>Q</b> | Socket Extension Cord IP66 40A 500V ac 5 Round Pin Orange | 1           |
| <b>BUEXO550</b><br><small>*Clipsal - 56CSC550-EO<br/>^NHP - ISOEX550P</small> | <b>R</b> | Socket Extension Cord IP66 50A 500V ac 5 Round Pin Orange | 1           |

### Socket Pin Configurations





Data Spec  
Sheets



See Trade  
Prices



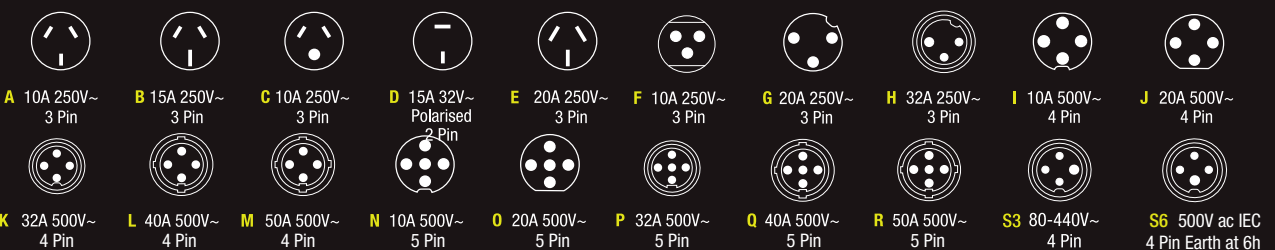
Web link to  
full range

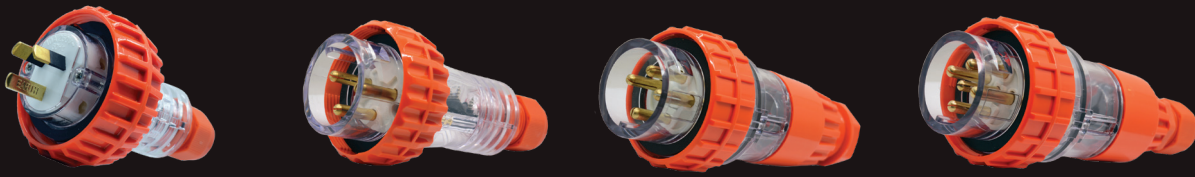
## ANGLED EXTENSION SOCKET



| Angled Socket Extension Cord Series |          |  | Qty Per Box |
|-------------------------------------|----------|--|-------------|
| <b>BUEXSOA320</b>                   | <b>E</b> | Socket Extension Cord Angled IP66 20A 250V ac 3 Round Pin Orange | 1           |
| <b>BUEXSOA332</b>                   | <b>H</b> | Socket Extension Cord Angled IP66 32A 250V ac 3 Round Pin Orange | 1           |
| <b>BUEXSOA410</b>                   | <b>I</b> | Socket Extension Cord Angled IP66 10A 500V ac 4 Round Pin Orange | 1           |
| <b>BUEXSOA420</b>                   | <b>J</b> | Socket Extension Cord Angled IP66 20A 500V ac 4 Round Pin Orange | 1           |
| <b>BUEXSOA432</b>                   | <b>K</b> | Socket Extension Cord Angled 32A 500V ac 4 Round Pin Orange      | 1           |
| <b>BUEXSOA440</b>                   | <b>L</b> | Socket Extension Cord Angled IP66 40A 500V ac 4 Round Pin Orange | 1           |
| <b>BUEXSOA450</b>                   | <b>M</b> | Socket Extension Cord Angled IP66 50A 500V ac 4 Round Pin Orange | 1           |
| <b>BUEXSOA510</b>                   | <b>N</b> | Socket Extension Cord Angled IP66 10A 500V ac 5 Round Pin Orange | 1           |
| <b>BUEXSOA520</b>                   | <b>O</b> | Socket Extension Cord Angled IP66 20A 500V ac 5 Round Pin Orange | 1           |
| <b>BUEXSOA532</b>                   | <b>P</b> | Socket Extension Cord Angled IP66 32A 500V ac 5 Round Pin Orange | 1           |
| <b>BUEXSOA540</b>                   | <b>Q</b> | Socket Extension Cord Angled IP66 40A 500V ac 5 Round Pin Orange | 1           |
| <b>BUEXSOA550</b>                   | <b>R</b> | Socket Extension Cord Angled IP66 50A 500V ac 5 Round Pin Orange | 1           |

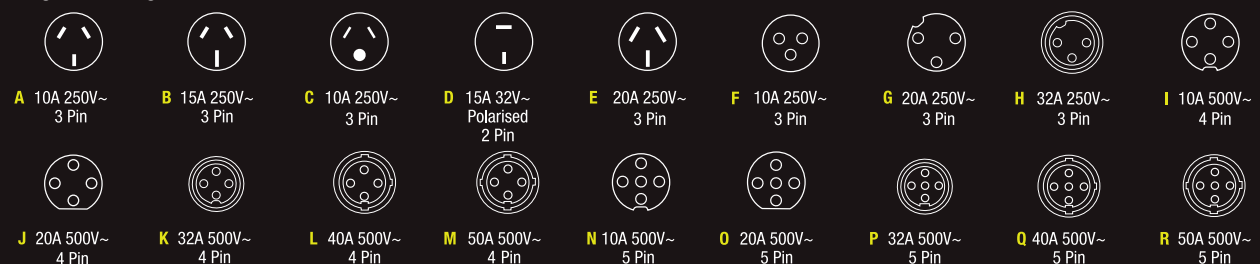
### Socket Pin Configurations





| Plugs Series  |          | Qty Per Box   |   |
|---|----------|---|---|
| <b>BUP310</b><br><small>*Clipsal - 56P310-EO<br/>*NHP - ISOPS310P</small>                         | <b>A</b> | Plug IP66 10A 250V ac 3 Flat Pin Orange             | 1 |
| <b>BUP310L</b><br><small>*Clipsal - 56P310SL-EO<br/>*NHP - ISOPS310SLP</small>                    | <b>C</b> | Plug IP66 10A 250V ac 2 Flat and 1 Round Pin Orange | 1 |
| <b>BUP310RP</b><br><small>*Clipsal - 56P310RP-EO</small>  | <b>F</b> | Plug IP66 10A 250V ac 3 Round Pin Orange            | 1 |
| <b>BUP315</b><br><small>*Clipsal - 56P315-EO<br/>*NHP - ISOPS315P</small>                         | <b>B</b> | Plug IP66 15A 250V ac 3 Flat Pin Orange             | 1 |
| <b>BUP320</b><br><small>*Clipsal - 56P320-EO<br/>*NHP - ISOPS320P</small>                         | <b>E</b> | Plug IP66 20A 250V ac 3 Round Pin Orange            | 1 |
| <b>BUP320F</b><br><small>*Clipsal - 56P320F-EO<br/>*NHP - ISOPS320FP</small>                      | <b>G</b> | Plug IP66 20A 250V ac 3 Flat Pin Orange             | 1 |
| <b>BUP332</b><br><small>*Clipsal - 56P332-EO<br/>*NHP - ISOPS332P</small>                         | <b>H</b> | Plug IP66 32A 250V ac 3 Round Pin Orange            | 1 |
| <b>BUP410</b><br><small>*Clipsal - 56P410-EO<br/>*NHP - ISOPS410P</small>                         | <b>I</b> | Plug IP66 10A 500V ac 4 Round Pin Orange            | 1 |
| <b>BUP420</b><br><small>*Clipsal - 56P420-EO<br/>*NHP - ISOPS420P</small>                         | <b>J</b> | Plug IP66 20A 500V ac 4 Round Pin Orange            | 1 |
| <b>BUP432</b><br><small>*Clipsal - 56P432-EO<br/>*NHP - ISOPS432P</small>                         | <b>K</b> | Plug IP66 32A 500V ac 4 Round Pin Orange            | 1 |
| <b>BUP440</b><br><small>*Clipsal - 56P440-EO<br/>*NHP - ISOPS440P</small>                         | <b>L</b> | Plug IP66 40A 500V ac 4 Round Pin Orange            | 1 |
| <b>BUP450</b><br><small>*Clipsal - 56P450-EO<br/>*NHP - ISOPS450P</small>                         | <b>M</b> | Plug IP66 50A 500V ac 4 Round Pin Orange            | 1 |
| <b>BUP510</b><br><small>*Clipsal - 56P510-EO<br/>*NHP - ISOPS510P</small>                         | <b>N</b> | Plug IP66 10A 500V ac 5 Round Pin Orange            | 1 |
| <b>BUP520</b><br><small>*Clipsal - 56P520-EO<br/>*NHP - ISOPS520P</small>                         | <b>O</b> | Plug IP66 20A 500V ac 5 Round Pin Orange            | 1 |
| <b>BUP532</b><br><small>*Clipsal - 56P532-EO<br/>*Clipsal - EY56P532<br/>*NHP - ISOPS532P</small> | <b>P</b> | Plug IP66 32A 500V ac 5 Round Pin Orange            | 1 |
| <b>BUP540</b><br><small>*Clipsal - 56P540-EO<br/>*NHP - ISOPS540P</small>                         | <b>Q</b> | Plug IP66 40A 500V ac 5 Round Pin Orange            | 1 |
| <b>BUP550</b><br><small>*Clipsal - 56P550-EO<br/>*NHP - ISOPS550P</small>                         | <b>R</b> | Plug IP66 50A 500V ac 5 Round Pin Orange            | 1 |

### Plug Pin Configurations





Data Spec  
Sheets

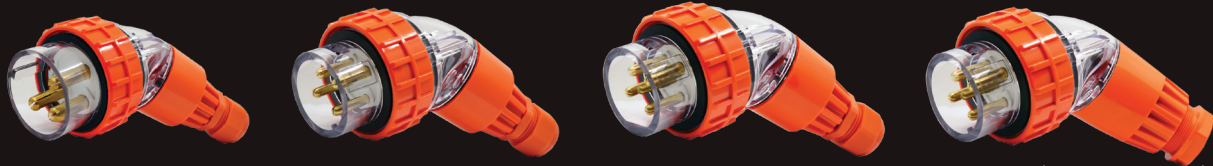


See Trade  
Prices



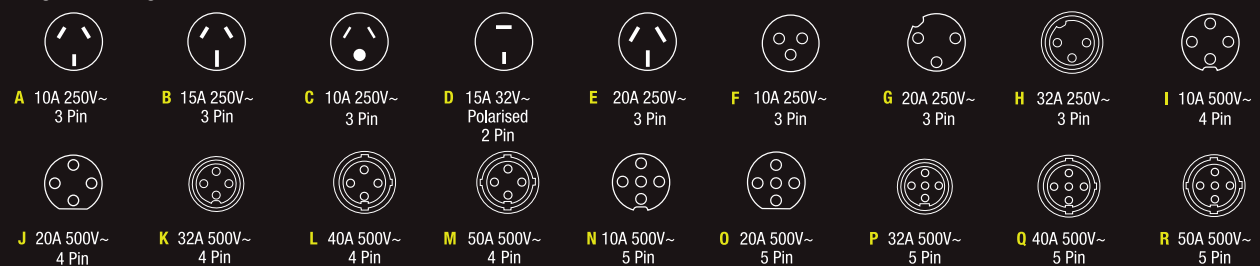
Web link to  
full range

## ANGLED PLUGS



| Plugs Angled Series   |          |   | Qty Per Box |
|---|----------|---|-------------|
| <b>BUPA320</b><br><small>*Clipsal - 56PA320-EO</small>                      | <b>G</b> | Plug Angled IP66 20A 250V ac 3 Round Pin Orange | 1           |
| <b>BUPA332</b><br><small>*Clipsal - 56PA332-EO</small>                      | <b>H</b> | Plug Angled IP66 32A 250V ac 3 Round Pin Orange | 1           |
| <b>BUPA410</b><br><small>*Clipsal - 56PA410-EO</small>                      | <b>I</b> | Plug Angled IP66 10A 500V ac 4 Round Pin Orange | 1           |
| <b>BUPA420</b><br><small>*Clipsal - 56PA420-EO<br/>*NHP - ISOPA420P</small> | <b>J</b> | Plug Angled IP66 20A 500V ac 4 Round Pin Orange | 1           |
| <b>BUPA432</b><br><small>*Clipsal - 56PA432-EO<br/>*NHP - ISOPA432P</small> | <b>K</b> | Plug Angled IP66 32A 500V ac 4 Round Pin Orange | 1           |
| <b>BUPA440</b><br><small>*Clipsal - 56PA440-EO<br/>*NHP - ISOPA440P</small> | <b>L</b> | Plug Angled IP66 40A 500V ac 4 Round Pin Orange | 1           |
| <b>BUPA450</b><br><small>*Clipsal - 56PA450-EO<br/>*NHP - ISOPA450P</small> | <b>M</b> | Plug Angled IP66 50A 500V ac 4 Round Pin Orange | 1           |
| <b>BUPA510</b><br><small>*Clipsal - 56PA510-EO</small>                      | <b>N</b> | Plug Angled IP66 10A 500V ac 5 Round Pin Orange | 1           |
| <b>BUPA520</b><br><small>*Clipsal - 56PA520-EO<br/>*NHP - ISOPA520P</small> | <b>O</b> | Plug Angled IP66 20A 500V ac 5 Round Pin Orange | 1           |
| <b>BUPA532</b><br><small>*Clipsal - 56PA532-EO<br/>*NHP - ISOPA532P</small> | <b>P</b> | Plug Angled IP66 32A 500V ac 5 Round Pin Orange | 1           |
| <b>BUPA540</b><br><small>*Clipsal - 56PA540-EO<br/>*NHP - ISOPA540P</small> | <b>Q</b> | Plug Angled IP66 40A 500V ac 5 Round Pin Orange | 1           |
| <b>BUPA550</b><br><small>*Clipsal - 56PA550-EO<br/>*NHP - ISOPA550P</small> | <b>R</b> | Plug Angled IP66 50A 500V ac 5 Round Pin Orange | 1           |

### Plug Pin Configurations





| Push Buttons Series   |  | Qty Per Box |
|---|--|-------------|
| <b>BUPBCBNC</b><br>*Clipsal - ZBE102<br>*NHP - D7X01              | Push Button Contact Block Normally Closed 10A 600V ac  | 1           |
| <b>BUPCBNO</b><br>*Clipsal - ZBE101<br>*NHP - D7X10               | Push Button Contact Block Normally Open 10A 600V ac  | 1           |
| <b>BUPBESTO</b><br>*Clipsal - 56PBS1<br>*NHP - 800F1YM3           | Push Button Emergency Stop Control Station Mushroom Button Twist Release Normally Closed Contact 10A | 1           |
| <b>BUPBESTOSW</b><br>*Clipsal - XB5AS8442<br>*NHP - 800FPMT44PX01 | Push Button Stop Switch Mushroom Button Twist Release Normally Closed 10A 600V ac IP65               | 1           |
| <b>BUPBSTA</b><br>*Clipsal - 56PB                                 | Push Button Start Control Station Normally Open Contact 10A 600V ac IP66                             | 1           |
| <b>BUPBSTACOV1</b><br>*Clipsal - 56L1/22-GY<br>*NHP - ISOL1H1G    | Push Button Start Control Station Cover Only 1 Aperture  | 1           |
| <b>BUPBSTACOV2</b><br>*NHP - ISOL1H2G                             | Push Button Start Control Station Cover Only 2 Apertures   | 1           |
| <b>BUPBSTAESTO</b><br>*Clipsal - 56/2PBS1-GY                      | Push Button Start Emergency Stop Control Station Mushroom Button Twist Release Normally Open Normal  | 1           |
| <b>BUPBSTASTO</b><br>*Clipsal - 56/2PB-GY                         | Push Button Start Stop Control Station Twist Release Normally Open Normally Closed Contacts 10A 600V | 1           |
| <b>BUPBSTASW</b><br>*Clipsal - XB5AA31<br>*NHP - D7PF301PX10      | Push Button Start Switch Normally Open 10A 600V ac IP65  | 1           |
| <b>BUPBSTOSW</b><br>*Clipsal - XB5AA42<br>*NHP - D7PF402PX01      | Push Button Stop Switch Normally Closed 10A 600V ac IP65   | 1           |



| Enclosures (Back Box) Series                              |  |   |
|---|--|---|
| <b>BUBB1G</b><br>*Clipsal - 56E1-GY<br>*NHP - ISOB1G      | Enclosure Back Box 1 Gang with 32mm and 2x25mm Entries Grey          | 1 |
| <b>BUBB1GS</b><br>*Clipsal - 56ES1-GY<br>*NHP - ISOBBS1G  | Enclosure Back Box Shallow 1 Gang with 25mm and 2x20mm Entries Grey  | 1 |
| <b>BUBB1GD</b>  | Enclosure Back Box Deep 1 Gang with 2x40mm Entries Grey              | 1 |
| <b>BUBB2G</b><br>*Clipsal - 56E2-GY<br>*NHP - ISOB2G      | Enclosure Back Box 2 Gang with 32mm and 2x25mm Entries Grey          | 1 |
| <b>BUBB2GS</b><br>*Clipsal - 56ES2-GY<br>*NHP - ISOBBS2G  | Enclosure Back Box Shallow 2 Gang with 25mm and 2x20mm Entries Grey  | 1 |
| <b>BUBB2GD</b><br>*Clipsal - 56ED2-GY<br>*NHP - ISOB2EDG  | Enclosure Back Box Deep 2 Gang with 2x40mm Entries Grey              | 1 |
| <b>BUBB3G</b><br>*Clipsal - 56E3-GY<br>*NHP - ISOB3G      | Enclosure Back Box 3 Gang with 32mm and 2x25mm Entries Grey          | 1 |
| <b>BUBB4G</b><br>*Clipsal - 56E4-GY<br>*NHP - ISOB4G      | Enclosure Back Box 4 Gang with 2x32mm and 2x25mm Entries Grey        | 1 |
| <b>BUBB4GV</b><br>*Clipsal - 56E4VH-GY<br>*NHP - ISOB4VHG | Enclosure Back Box 4 Gang Vertical with 32mm and 2x25mm Entries Grey | 1 |
| <b>BUBB6G</b><br>*Clipsal - 56E6-GY<br>*NHP - ISOB6G      | Enclosure Back Box 6 Gang with 2x32mm and 2x25mm Entries Grey        | 1 |



Data Spec  
Sheets



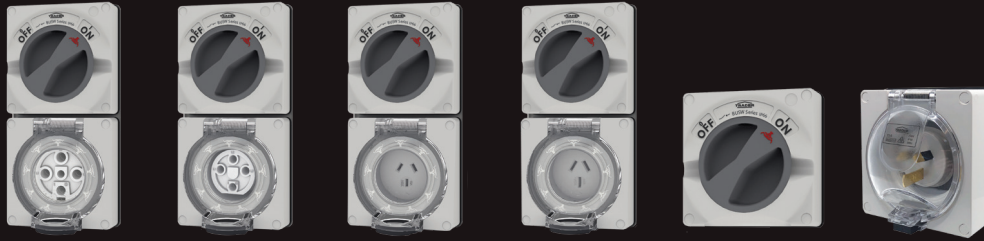
See Trade  
Prices



Web link to  
full range



| Enclosure Lid Series  |   | Qty Per Box |
|---|---|-------------|
| <b>BUL1</b><br><small>*Clipsal - 56L1-GY<br/>^NHP - ISOBBL1G</small>        | Lid for 1 Gang Enclosures Grey  | 1           |
| <b>BUL2</b><br><small>*Clipsal - 56L2-GY<br/>^NHP - ISOBBL2G</small>        | Lid for 2 Gang Enclosures Grey  | 1           |
| Junction Box Series   |   |             |
| <b>BUJB1</b><br><small>*Clipsal - 56JB1-GY</small>                          | Junction Box 1 Gang IP66 2x20mm and 1x25mm Entries 40A Connectors for 3x6mm <sup>2</sup> or 4x2.5m <sup>2</sup> Cables Grey | 1           |
| <b>BUJB2</b><br><small>*Clipsal - 56JB2-GY</small>                          | Junction Box 2 Gang IP66 2x25mm and 1x32mm Entries 40A Connectors for 3x6mm <sup>2</sup> or 4x2.5m <sup>2</sup> Cables Grey | 1           |
| Enclosure DIN Series  |   |             |
| <b>BU4DIN</b><br><small>*Clipsal - 56SB4-GY</small>                         | Enclosure DIN 4 Pole IP66 Grey  | 1           |
| <b>BU4DINLED</b><br><small>*Clipsal - 56CB4NM<br/>^NHP - ISORCDINPG</small> | Enclosure DIN 4 Pole IP66 Grey with LED Indicator   | 1           |
| DIN Rail Assembly and Bridge for BUBB Back Box                              |   |             |
| <b>BU4DINKIT</b><br><small>*Clipsal - 56DINASS</small>                      | DIN Rail Assembly Kit 4 Pole Grey   | 15          |
| <b>BUBRIDGE</b><br><small>*Clipsal - 56B-BK</small>                         | Bridge for BUBB Enclosure Back Box Range Black  | 10          |
| <b>BUBRIDGED</b><br><small>*Clipsal - 56DV-BK</small>                       | Bridge Divider for BUBB Enclosure Back Box Range Black  | 10          |
| <b>BUCAP9</b><br><small>*Clipsal - 9-LG</small>                             | Cover Screw Caps for Buffalo Range Grey Pack of 4   | 25          |
| <b>BUSPOK</b><br><small>*Clipsal - 56SPOK<br/>^NHP - ISOBKBB</small>        | Pendant Kit Stainless Steel for Switched Outlets Grey   | 10          |
| Switchboard   |   |             |
| <b>BUSB13</b><br><small>*Clipsal - 56CB13-GY</small>                        | Switchboard 13 Module IP66 100A Grey  | 1           |
| Breather and Pressure Equaliser Series                                      |   |             |
| <b>BUBR</b>   | Breather and Pressure Equaliser M25 Thread IP68 Black   | 10          |
| <b>BUBRD</b><br><small>*Clipsal - 56D</small>                               | Breather and Pressure Equaliser with Drain M25 Thread IP64 Green  | 10          |
| Socket Flap Assembly  |   |             |
| <b>BUSOFA</b>   | Socket Flap Assembly Spare Part for Buffalo Socket Outlets Transparent  | 6           |
| Gasket  |   |             |
| <b>BUHPG1G</b><br><small>*Clipsal - 56HPG1-CM</small>                       | Gasket Weatherproof High Pressure 1 Gang Cream for Buffalo Range  | TBC         |
| <b>BUHPG2G</b><br><small>*Clipsal - 56HPG2/2-CM</small>                     | Gasket Weatherproof High Pressure 2 Gang Cream for Buffalo Range  | 10          |
| Mounting Feet   |   |             |
| <b>BUMF</b><br><small>*Clipsal - 56MF</small>                               | Mounting Feet Kit for Buffalo Enclosures 304 Stainless Steel  | 12          |
| Pendant Outlet Adaption Kit   |   |             |
| <b>BUPOA22</b>  | Pendant Outlet Adaption Kit Metal Diameter 22.4mm Small   | 20          |
| <b>BUPOA50</b><br><small>*Clipsal - 56POK</small>                           | Pendant Outlet Adaption Kit Metal Diameter 50.5mm Large   | 20          |



| Combination Switch Socket Series - LESS ENCLOSURE                                  |          |   | Qty Per Box |
|--|----------|---|-------------|
| <b>BUC310LE</b><br><small>*Clipsal - 56C310LE-GY</small>                           | <b>A</b> | Combination Switched Socket Outlet IP66 10A 250V ac 3 Flat Pin Grey Less Enclosure  | 1           |
| <b>BUC315LE</b><br><small>*Clipsal - 56C315LE-GY</small>                           | <b>B</b> | Combination Switched Socket Outlet IP66 15A 250V ac 3 Flat Pin Grey Less Enclosure  | 1           |
| <b>BUC320LE</b><br><small>*Clipsal - 56C320LE-GY</small>                           | <b>G</b> | Combination Switched Socket Outlet IP66 20A 250V ac 3 Round Pin Grey Less Enclosure | 1           |
| <b>BUC320FLE</b><br><small>*Clipsal - 56C320FLE-GY</small>                         | <b>E</b> | Combination Switched Socket Outlet IP66 20A 250V ac 3 Flat Pin Grey Less Enclosure  | 1           |
| <b>BUC332LE</b><br><small>*Clipsal - 56C332LE-GY</small>                           | <b>H</b> | Combination Switched Socket Outlet IP66 32A 250V ac 3 Round Pin Grey Less Enclosure | 1           |
| <b>BUC410LE</b><br><small>*Clipsal - 56C410LE-GY</small>                           | <b>I</b> | Combination Switched Socket Outlet IP66 10A 500V ac 4 Round Pin Grey Less Enclosure | 1           |
| <b>BUC420LE</b><br><small>*Clipsal - 56C420LE-GY</small>                           | <b>J</b> | Combination Switched Socket Outlet IP66 20A 500V ac 4 Round Pin Grey Less Enclosure | 1           |
| <b>BUC432LE</b><br><small>*Clipsal - 56C432LE-GY</small>                           | <b>K</b> | Combination Switched Socket Outlet IP66 32A 500V ac 4 Round Pin Grey Less Enclosure | 1           |
| <b>BUC440LE</b>  | <b>L</b> | Combination Switched Socket Outlet IP66 40A 500V ac 4 Round Pin Grey Less Enclosure | 1           |
| <b>BUC450LE</b><br><small>*Clipsal - 56C450LE-GY</small>                           | <b>M</b> | Combination Switched Socket Outlet IP66 50A 500V ac 4 Round Pin Grey Less Enclosure | 1           |
| <b>BUC510LE</b><br><small>*Clipsal - 56C510LE-GY</small>                           | <b>N</b> | Combination Switched Socket Outlet IP66 10A 500V ac 5 Round Pin Grey Less Enclosure | 1           |
| <b>BUC520LE</b><br><small>*Clipsal - 56C520LE-GY</small>                           | <b>O</b> | Combination Switched Socket Outlet IP66 20A 500V ac 5 Round Pin Grey Less Enclosure | 1           |
| <b>BUC532LE</b><br><small>*Clipsal - 56C532LE-GY</small>                           | <b>P</b> | Combination Switched Socket Outlet IP66 32A 500V ac 5 Round Pin Grey Less Enclosure | 1           |
| <b>BUC540LE</b>  | <b>Q</b> | Combination Switched Socket Outlet IP66 40A 500V ac 5 Round Pin Grey Less Enclosure | 1           |
| <b>BUC550LE</b><br><small>*Clipsal - 56C550LE-GY</small>                           | <b>R</b> | Combination Switched Socket Outlet IP66 50A 500V ac 5 Round Pin Grey Less Enclosure | 1           |
| <b>Switch Series - LESS ENCLOSURE</b>  |          |   |             |
| <b>BUSW210LE</b><br><small>*Clipsal - 56SW210LE-GY<br/>^NHP - ISOSW110PGLB</small> |          | Switch Disconnecter IP66 10A 500V ac 2 Pole Grey Less Enclosure                     | 1           |
| <b>BUSW220LE</b><br><small>*Clipsal - 56SW220LE-GY<br/>^NHP - ISOSW120PGLB</small> |          | Switch Disconnecter IP66 20A 500V ac 2 Pole Grey Less Enclosure                     | 1           |
| <b>BUSW220COLE</b><br><small>*Clipsal - 56SW220COLE-GY</small>                     |          | Switch Changeover IP66 20A 500V ac 2 Pole Grey Less Enclosure                       | 1           |
| <b>BUSW232LE</b><br><small>*Clipsal - 56SW232LE-GY<br/>^NHP - ISOSW132PGLB</small> |          | Switch Disconnecter IP66 32A 500V ac 2 Pole Grey Less Enclosure                     | 1           |
| <b>BUSW310LE</b><br><small>*Clipsal - 56SW310LE-GY<br/>^NHP - ISOSW310PGLB</small> |          | Switch Disconnecter IP66 10A 250V ac 3 Pole Grey Less Enclosure                     | 1           |
| <b>BUSW320LE</b><br><small>*Clipsal - 56SW320LE-GY<br/>^NHP - ISOSW320PGLB</small> |          | Switch Disconnecter IP66 20A 250V ac 3 Pole Grey Less Enclosure                     | 1           |
| <b>BUSW320RLE</b><br><small>*Clipsal - 56SW320RLE-GY</small>                       |          | Switch Forward Reverse IP66 20A 500V ac 3 Pole Grey Less Enclosure                  | 1           |
| <b>BUSW332LE</b><br><small>*Clipsal - 56SW332LE-GY<br/>^NHP - ISOSW332PGLB</small> |          | Switch Disconnecter IP66 32A 500V ac 3 Pole Grey Less Enclosure                     | 1           |
| <b>BUSW363LE</b><br><small>*Clipsal - 56SW363LE-GY</small>                         |          | Switch Disconnecter IP66 63A 500V ac 3 Pole Grey Less Enclosure                     | 1           |
| <b>BUSW420LE</b><br><small>*Clipsal - 56SW420LE-GY</small>                         |          | Switch Disconnecter IP66 20A 500V ac 4 Pole Grey Less Enclosure                     | 1           |
| <b>BUSW432LE</b><br><small>*Clipsal - 56SW432LE-GY</small>                         |          | Switch Disconnecter IP66 32A 500V ac 4 Pole Grey Less Enclosure                     | 1           |
| <b>BUSW463LE</b><br><small>*Clipsal - 56SW463LE-GY</small>                         |          | Switch Disconnecter IP66 63A 500V ac 4 Pole Grey Less Enclosure                     | 1           |

▲ Note: See Socket Pin Configuration diagrams on page 2



Data Spec  
Sheets



See Trade  
Prices



Web link to  
full range

**LESS ENCLOSURES  
(BACK BOXES)**



| Appliance Inlet Series - LESS ENCLOSURE   |          |   | Qty Per Box |
|---|----------|---|-------------|
| <b>BUAI310LE</b><br><small>*Clipsal - 56AI310LE-GY<br/>^NHP - ISOAI310PGLB</small>    | <b>A</b> | Appliance Inlet IP66 10A 250V ac 3 Flat Pin Grey Less Enclosure           | 1           |
| <b>BUAI315LE</b><br><small>*Clipsal - 56AI315LE-GY<br/>^NHP - ISOAI315PGLB</small>    | <b>B</b> | Appliance Inlet IP66 15A 250V ac 3 Flat Pin Grey Less Enclosure           | 1           |
| Sockets Heavy Duty Series - LESS ENCLOSURE  |          |   |             |
| <b>BUSOAU310LE</b><br><small>*Clipsal - 56SO310ALE-GY</small>                         | <b>A</b> | Socket Auto Switched IP66 10A 250V ac 3 Flat Pin Grey Less Enclosure      | 1           |
| <b>BUSOAU315LE</b><br><small>*Clipsal - 56SO315ALE-GY</small>                         | <b>B</b> | Socket Auto Switched IP66 15A 250V ac 3 Flat Pin Grey Less Enclosure      | 1           |
| <b>BUSO215P32LE</b><br><small>*Clipsal - 56SO215/32LE-GY</small>                      | <b>D</b> | Socket Outlet IP66 15A 32V ac 2 Pin Polarised Grey Less Enclosure         | 1           |
| <b>BUSO310LE</b><br><small>*Clipsal - 56SO310LE-GY<br/>^NHP - ISOSO310PGLB</small>    | <b>A</b> | Socket Outlet IP66 10A 250V ac 3 Flat Pin Grey Less Enclosure             | 1           |
| <b>BUSO310LLE</b><br><small>*Clipsal - 56SO310LLE-GY<br/>^NHP - ISOSO310LPGLB</small> | <b>C</b> | Socket Outlet IP66 10A 250V ac 2 Flat and 1 Round Pin Grey Less Enclosure | 1           |
| <b>BUSO310RPLE</b><br><small>*Clipsal - 56SO310RPLE-GY</small>                        | <b>F</b> | Socket IP66 10A 250V ac 3 Round Pin Grey Less Enclosure                   | 1           |
| <b>BUSO315LE</b><br><small>*Clipsal - 56SO315LE-GY<br/>^NHP - ISOSO315PGLB</small>    | <b>B</b> | Socket Outlet IP66 15A 250V ac 3 Flat Pin Grey Less Enclosure             | 1           |
| <b>BUSO320LE</b><br><small>*Clipsal - 56SO320LE-GY<br/>^NHP - ISOSO320PGLB</small>    | <b>G</b> | Socket Outlet IP66 20A 250V ac 3 Round Pin Grey Less Enclosure            | 1           |
| <b>BUSO320FLE</b><br><small>*Clipsal - 56SO320FLE-GY<br/>^NHP - ISOSO320FPGLB</small> | <b>E</b> | Socket Outlet IP66 20A 250V ac 3 Flat Pin Grey Less Enclosure             | 1           |
| <b>BUSO332LE</b><br><small>*Clipsal - 56SO332LE-GY<br/>^NHP - ISOSO332PGLB</small>    | <b>H</b> | Socket Outlet IP66 32A 250V ac 3 Round Pin Grey Less Enclosure            | 1           |
| <b>BUSO410LE</b><br><small>*Clipsal - 56SO410LE-GY<br/>^NHP - ISOSO410PGLB</small>    | <b>I</b> | Socket Outlet IP66 10A 500V ac 4 Round Pin Grey Less Enclosure            | 1           |
| <b>BUSO420LE</b><br><small>*Clipsal - 56SO420LE-GY<br/>^NHP - ISOSO420PGLB</small>    | <b>J</b> | Socket Outlet IP66 20A 500V ac 4 Round Pin Grey Less Enclosure            | 1           |
| <b>BUSO432LE</b><br><small>*Clipsal - 56SO432LE-GY<br/>^NHP - ISOSO432PGLB</small>    | <b>K</b> | Socket Outlet IP66 32A 500V ac 4 Round Pin Grey Less Enclosure            | 1           |
| <b>BUSO440LE</b><br><small>*NHP - ISOSO440PGLB</small>                                | <b>L</b> | Socket Outlet IP66 40A 500V ac 4 Round Pin Grey Less Enclosure            | 1           |
| <b>BUSO450LE</b><br><small>*Clipsal - 56SO450LE-GY<br/>^NHP - ISOSO450PGLB</small>    | <b>M</b> | Socket Outlet IP66 50A 500V ac 4 Round Pin Grey Less Enclosure            | 1           |
| <b>BUSO510LE</b><br><small>*Clipsal - 56SO510LE-GY<br/>^NHP - ISOSO510PGLB</small>    | <b>N</b> | Socket Outlet IP66 10A 500V ac 5 Round Pin Grey Less Enclosure            | 1           |
| <b>BUSO520LE</b><br><small>*Clipsal - 56SO520LE-GY<br/>^NHP - ISOSO520PGLB</small>    | <b>O</b> | Socket Outlet IP66 20A 500V ac 5 Round Pin Grey Less Enclosure            | 1           |
| <b>BUSO532LE</b><br><small>*Clipsal - 56SO532LE-GY<br/>^NHP - ISOSO532PGLB</small>    | <b>P</b> | Socket Outlet IP66 32A 500V ac 5 Round Pin Grey Less Enclosure            | 1           |
| <b>BUSO540LE</b><br><small>*Clipsal - 56SO540LE-GY<br/>^NHP - ISOSO540PGLB</small>    | <b>Q</b> | Socket Outlet IP66 40A 500V ac 5 Round Pin Grey Less Enclosure            | 1           |
| <b>BUSO550LE</b><br><small>*Clipsal - 56SO550LE-GY<br/>^NHP - ISOSO550PGLB</small>    | <b>R</b> | Socket Outlet IP66 50A 500V ac 5 Round Pin Grey Less Enclosure            | 1           |
| Enclosure DIN Series - LESS ENCLOSURE   |          |   |             |
| <b>BU4DINLE</b><br><small>*Clipsal - 56CB4-GY</small>                                 |          | Enclosure DIN 4 Pole IP66 Grey Less Enclosure                             | 1           |
| <b>BU4DINLEDLE</b><br><small>*Clipsal - 56CB4N-GY<br/>^NHP - ISORCDNPG</small>        |          | Enclosure DIN 4 Pole IP66 Grey with LED Less Enclosure                    | 1           |
| MECH APERTURE - LESS ENCLOSURE  |          |   |             |
| <b>BUMAE2GLE</b><br><small>*Clipsal - 56/32LE-GY</small>                              |          | Enclosure Mechanism Aperture 2 Gang IP66 Grey Less Enclosure              | 1           |

**▲ Note: See Socket Pin Configuration diagrams on page 2**

# BUFFALO ™

## Chemical Resistant Range - Acid test proven

Our new Buffalo Chemical Resistant range is designed to meet the needs of harsh industrial environments where intensive cleaning and chemical contact would otherwise damage standard switchgear surfaces.

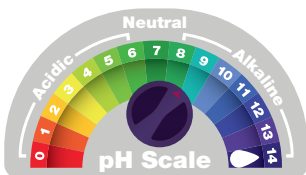


**BUFFALO**   
CHEMICAL RESISTANT  
GREY FOR ALKALINE/CAUSTIC

### Grey & Purple

Resists: Alkaline and caustic cleaners and foaming agents eg. Sodium Hydroxide and Potassium Hydroxide

Typical applications: Food processing plants, fast food outlets & workshops

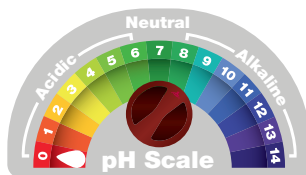


**BUFFALO**   
CHEMICAL RESISTANT  
ORANGE FOR ACIDIC

### Orange & Dark Red

Resists: Acidic based cleaners eg. Hydrochloric, Nitric and Sulphuric.

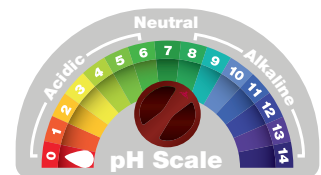
Typical applications: Wineries, commercial kitchens & food preparation storage tanks



**BUFFALO**   
CHEMICAL RESISTANT  
WHITE FOR ACIDIC

### White & Dark Red

Typical applications:  
For food preparation areas that use acidic type cleaners but require a stylish presentation to match the decor. Typical applications include supermarket deli areas, restaurants and food preparation facilities.



**Buffalo Chemical Resistant for long life performance.**



**SCAN QR CODE TO FIND OUT MORE**



Data Spec  
Sheets

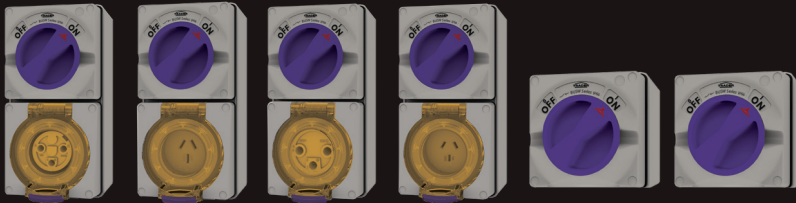


See Trade  
Prices



Web link to  
full range

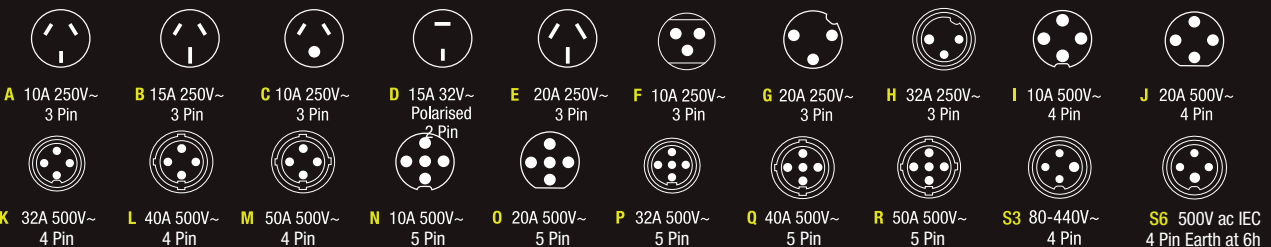
**COMBINATION SWITCHED SOCKETS  
AND SWITCHES**



| Combination Switch Socket Series - Chemical Resistant Grey |          |   | Qty Per Box |
|--|----------|---|-------------|
| <b>BUC310RG</b><br><small>*Clipsal - 56C310-CG</small>     | <b>A</b> | Combination Switched Socket IP66 10A 250V 3 Flat Pin Chemical Resistant Grey  | 1           |
| <b>BUC315RG</b><br><small>*Clipsal - 56C315-CG</small>     | <b>B</b> | Combination Switched Socket IP66 15A 250V 3 Flat Pin Chemical Resistant Grey  | 1           |
| <b>BUC320RG</b><br><small>*Clipsal - 56C320-CG</small>     | <b>G</b> | Combination Switched Socket IP66 20A 250V 3 Round Pin Chemical Resistant Grey | 1           |
| <b>BUC320FRG</b><br><small>*Clipsal - 56C320F-CG</small>   | <b>E</b> | Combination Switched Socket IP66 20A 250V 3 Flat Pin Chemical Resistant Grey  | 1           |
| <b>BUC332RG</b><br><small>*Clipsal - 56C332-CG</small>     | <b>H</b> | Combination Switched Socket IP66 32A 250V 3 Round Pin Chemical Resistant Grey | 1           |
| <b>BUC410RG</b><br><small>*Clipsal - 56C410-CG</small>     | <b>I</b> | Combination Switched Socket IP66 10A 500V 4 Round Pin Chemical Resistant Grey | 1           |
| <b>BUC420RG</b><br><small>*Clipsal - 56C420-CG</small>     | <b>J</b> | Combination Switched Socket IP66 20A 500V 4 Round Pin Chemical Resistant Grey | 1           |
| <b>BUC432RG</b><br><small>*Clipsal - 56C432-CG</small>     | <b>K</b> | Combination Switched Socket IP66 32A 500V 4 Round Pin Chemical Resistant Grey | 1           |
| <b>BUC440RG</b><br><small>*Clipsal - 56C440-CG</small>     | <b>L</b> | Combination Switched Socket IP66 40A 500V 4 Round Pin Chemical Resistant Grey | 1           |
| <b>BUC450RG</b><br><small>*Clipsal - 56C450-CG</small>     | <b>M</b> | Combination Switched Socket IP66 50A 500V 4 Round Pin Chemical Resistant Grey | 1           |
| <b>BUC510RG</b><br><small>*Clipsal - 56C510-CG</small>     | <b>N</b> | Combination Switched Socket IP66 10A 500V 5 Round Pin Chemical Resistant Grey | 1           |
| <b>BUC520RG</b><br><small>*Clipsal - 56C520-CG</small>     | <b>O</b> | Combination Switched Socket IP66 20A 500V 5 Round Pin Chemical Resistant Grey | 1           |
| <b>BUC532RG</b><br><small>*Clipsal - 56C532-CG</small>     | <b>P</b> | Combination Switched Socket IP66 32A 500V 5 Round Pin Chemical Resistant Grey | 1           |
| <b>BUC540RG</b><br><small>*Clipsal - 56C540-CG</small>     | <b>Q</b> | Combination Switched Socket IP66 40A 500V 5 Round Pin Chemical Resistant Grey | 1           |
| <b>BUC550RG</b><br><small>*Clipsal - 56C550-CG</small>     | <b>R</b> | Combination Switched Socket IP66 50A 500V 5 Round Pin Chemical Resistant Grey | 1           |

| Heavy Duty Switch Series - Chemical Resistant Grey         |  |  |
|--|--|--|
| <b>BUSW210RG</b><br><small>*Clipsal - 56SW210/2-CG</small> | Switch Disconnecter IP66 10A 500V 2 Pole Chemical Resistant Grey |  |
| <b>BUSW220RG</b><br><small>*Clipsal - 56SW220-CG</small>   | Switch Disconnecter IP66 20A 500V 2 Pole Chemical Resistant Grey |  |
| <b>BUSW232RG</b><br><small>*Clipsal - 56SW232/2-CG</small> | Switch Disconnecter IP66 32A 500V 2 Pole Chemical Resistant Grey |  |
| <b>BUSW310RG</b><br><small>*Clipsal - 56SW310-CG</small>   | Switch Disconnecter IP66 10A 500V 3 Pole Chemical Resistant Grey |  |
| <b>BUSW320RG</b><br><small>*Clipsal - 56SW320-CG</small>   | Switch Disconnecter IP66 20A 500V 3 Pole Chemical Resistant Grey |  |
| <b>BUSW332RG</b><br><small>*Clipsal - 56SW332-CG</small>   | Switch Disconnecter IP66 32A 500V 3 Pole Chemical Resistant Grey |  |
| <b>BUSW363RG</b><br><small>*Clipsal - 56SW363-CG</small>   | Switch Disconnecter IP66 63A 500V 3 Pole Chemical Resistant Grey |  |

Socket Pin Configurations





| Enclosure DIN Series - Chemical Resistant Grey         |  | Qty Per Box |
|--|--|-------------|
| <b>BU4DINRG</b><br><i>*Clipsal - 56CB4N-CG</i>         | Enclosure DIN 4 Pole IP66 Chemical Resistant Grey  | 1           |
| Enclosure Lid Series - Chemical Resistant Grey         |  |             |
| <b>BUL1RG</b><br><i>*Clipsal - 56L1-CG</i>             | Lid for 1 Gang Enclosures Chemical Resistant Grey  | 1           |
| <b>BUL2RG</b><br><i>*Clipsal - 56L2-CG</i>             | Lid for 2 Gang Enclosures Chemical Resistant Grey  | 1           |
| Enclosures (Back Box) Series - Chemical Resistant Grey |  |             |
| <b>BUBB1GRG</b><br><i>*Clipsal - 56E1-CG</i>           | Enclosure Back Box 1 Gang with 32mm and 2x25mm Entries Chemical Resistant Grey           | 1           |
| <b>BUBB1GSRG</b>                                       | Enclosure Back Box Shallow 1 Gang with 25mm and 2 x 20mm Entries Chemical Resistant Grey | 1           |
| <b>BUBB2GRG</b><br><i>*Clipsal - 56E2-CG</i>           | Enclosure Back Box 2 Gang with 32mm and 2x25mm Entries Chemical Resistant Grey           | 1           |
| <b>BUBB2GSRG</b>                                       | Enclosure Back Box Shallow 2 Gang with 25mm and 2 x 20mm Entries Chemical Resistant Grey | 1           |
| <b>BUBB4GRG</b><br><i>*Clipsal - 56E4-CG</i>           | Enclosure Back Box 4 Gang with 2x32mm 2x25mm Entries Chemical Resistant Grey             | 1           |



**Sockets Heavy Duty Series - Chemical Resistant Grey**

|  |          |  |   |
|--|----------|--|---|
| <b>BUSO310RG</b><br><i>*Clipsal - 56SO310-CG</i> | <b>A</b> | Socket Outlet IP66 10A 250V ac 3 Flat Pin Chemical Resistant Grey  | 1 |
| <b>BUSO315RG</b><br><i>*Clipsal - 56SO315-CG</i> | <b>B</b> | Socket Outlet IP66 15A 250V ac 3 Flat Pin Chemical Resistant Grey  | 1 |
| <b>BUSO320RG</b><br><i>*Clipsal - 56SO320-CG</i> | <b>G</b> | Socket Outlet IP66 20A 250V ac 3 Round Pin Chemical Resistant Grey | 1 |
| <b>BUSO320FRG</b>                                | <b>E</b> | Socket Outlet IP66 20A 250V ac 3 Flat Pin Chemical Resistant Grey  | 1 |
| <b>BUSO332RG</b>                                 | <b>H</b> | Socket Outlet IP66 32A 250V ac 3 Round Pin Chemical Resistant Grey | 1 |
| <b>BUSO410RG</b>                                 | <b>I</b> | Socket Outlet IP66 10A 500V ac 4 Pin Chemical Resistant Grey       | 1 |
| <b>BUSO420RG</b>                                 | <b>J</b> | Socket Outlet IP66 20A 500V ac 4 Pin Chemical Resistant Grey       | 1 |
| <b>BUSO432RG</b>                                 | <b>K</b> | Socket Outlet IP66 32A 500V ac 4 Pin Chemical Resistant Grey       | 1 |
| <b>BUSO440RG</b>                                 | <b>L</b> | Socket Outlet IP66 40A 500V ac 4 Pin Chemical Resistant Grey       | 1 |
| <b>BUSO450RG</b>                                 | <b>M</b> | Socket Outlet IP66 50A 500V ac 4 Pin Chemical Resistant Grey       | 1 |
| <b>BUSO510RG</b>                                 | <b>N</b> | Socket Outlet IP66 10A 500V ac 5 Pin Chemical Resistant Grey       | 1 |
| <b>BUSO520RG</b>                                 | <b>O</b> | Socket Outlet IP66 20A 500V ac 5 Pin Chemical Resistant Grey       | 1 |
| <b>BUSO532RG</b>                                 | <b>P</b> | Socket Outlet IP66 32A 500V ac 5 Pin Chemical Resistant Grey       | 1 |
| <b>BUSO540RG</b>                                 | <b>Q</b> | Socket Outlet IP66 40A 500V ac 5 Pin Chemical Resistant Grey       | 1 |
| <b>BUSO550RG</b>                                 | <b>R</b> | Socket Outlet IP66 50A 500V ac 5 Pin Chemical Resistant Grey       | 1 |



Data Spec  
Sheets

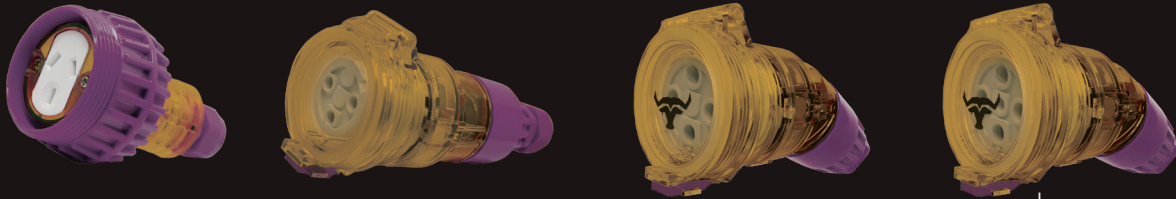


See Trade  
Prices



Web link to  
full range

**EXTENSION SOCKETS**



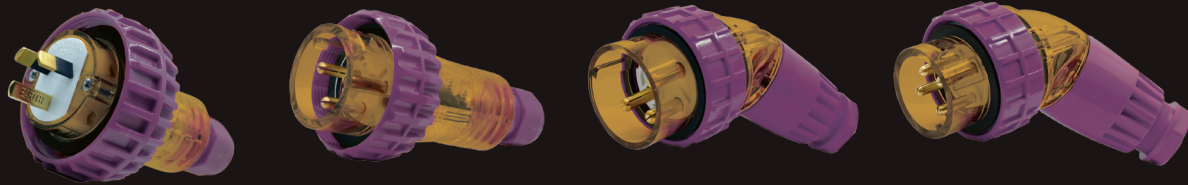
**Socket Extension Cord Series - Chemical Resistant Grey**

|              |   |  | Qty Per Box |
|--------------|---|--|-------------|
| BUEXSO310RG  | A | Socket Extension Cord IP66 10A 250V ac 3 Flat Pin Chemical Resistant Grey  | 1           |
| BUEXSO315RG  | B | Socket Extension Cord IP66 15A 250V ac 3 Flat Pin Chemical Resistant Grey  | 1           |
| BUEXSO320RG  | G | Socket Extension Cord IP66 20A 250V ac 3 Round Pin Chemical Resistant Grey | 1           |
| BUEXSO320FRG | E | Socket Extension Cord IP66 20A 250V ac 3 Flat Pin Chemical Resistant Grey  | 1           |
| BUEXSO332RG  | H | Socket Extension Cord IP66 32A 250V ac 3 Round Pin Chemical Resistant Grey | 1           |
| BUEXSO410RG  | I | Socket Extension Cord IP66 10A 500V ac 4 Round Pin Chemical Resistant Grey | 1           |
| BUEXSO420RG  | J | Socket Extension Cord IP66 20A 500V ac 4 Round Pin Chemical Resistant Grey | 1           |
| BUEXSO432RG  | K | Socket Extension Cord IP66 32A 500V ac 4 Round Pin Chemical Resistant Grey | 1           |
| BUEXSO440RG  | L | Socket Extension Cord IP66 40A 500V ac 4 Round Pin Chemical Resistant Grey | 1           |
| BUEXSO450RG  | M | Socket Extension Cord IP66 50A 500V ac 4 Round Pin Chemical Resistant Grey | 1           |
| BUEXSO510RG  | N | Socket Extension Cord IP66 10A 500V ac 5 Round Pin Chemical Resistant Grey | 1           |
| BUEXSO520RG  | O | Socket Extension Cord IP66 20A 500V ac 5 Round Pin Chemical Resistant Grey | 1           |
| BUEXSO532RG  | P | Socket Extension Cord IP66 32A 500V ac 5 Round Pin Chemical Resistant Grey | 1           |
| BUEXSO540RG  | Q | Socket Extension Cord IP66 40A 500V ac 5 Round Pin Chemical Resistant Grey | 1           |
| BUEXSO550RG  | R | Socket Extension Cord IP66 50A 500V ac 5 Round Pin Chemical Resistant Grey | 1           |

**Angled Socket Extension Cord Series - Chemical Resistant Grey**

|              |   |   |   |
|--------------|---|---|---|
| BUEXSOA320RG | E | Socket Extension Cord Angled IP66 20A 250V ac 3 Round Pin Chemical Resistant Grey | 1 |
| BUEXSOA332RG | H | Socket Extension Cord Angled IP66 32A 250V ac 3 Round Pin Chemical Resistant Grey | 1 |
| BUEXSOA410RG | I | Socket Extension Cord Angled IP66 10A 500V ac 4 Round Pin Chemical Resistant Grey | 1 |
| BUEXSOA420RG | J | Socket Extension Cord Angled IP66 20A 500V ac 4 Round Pin Chemical Resistant Grey | 1 |
| BUEXSOA432RG | K | Socket Extension Cord Angled IP66 32A 500V ac 4 Round Pin Chemical Resistant Grey | 1 |
| BUEXSOA440RG | L | Socket Extension Cord Angled IP66 40A 500V ac 4 Round Pin Chemical Resistant Grey | 1 |
| BUEXSOA450RG | M | Socket Extension Cord Angled IP66 50A 500V ac 4 Round Pin Chemical Resistant Grey | 1 |
| BUEXSOA510RG | N | Socket Extension Cord Angled IP66 10A 500V ac 5 Round Pin Chemical Resistant Grey | 1 |
| BUEXSOA520RG | O | Socket Extension Cord Angled IP66 20A 500V ac 5 Round Pin Chemical Resistant Grey | 1 |
| BUEXSOA532RG | P | Socket Extension Cord Angled IP66 32A 500V ac 5 Round Pin Chemical Resistant Grey | 1 |
| BUEXSOA540RG | Q | Socket Extension Cord Angled IP66 40A 500V ac 5 Round Pin Chemical Resistant Grey | 1 |
| BUEXSOA550RG | R | Socket Extension Cord Angled IP66 50A 500V ac 5 Round Pin Chemical Resistant Grey | 1 |

▲ Note: See Socket Pin Configuration diagrams on page 2



| Plugs Series - Chemical Resistant Grey        |          |  | Qty Per Box |
|---|----------|--|-------------|
| BUP310RG                                      | <b>A</b> | Plug IP66 10A 250V ac 3 Flat Pin Chemical Resistant Grey             | 1           |
| BUP310LRG                                     | <b>C</b> | Plug IP66 10A 250V ac 2 Flat and 1 Round Pin Chemical Resistant Grey | 1           |
| BUP315RG                                      | <b>B</b> | Plug IP66 15A 250V ac 3 Flat Pin Chemical Resistant Grey             | 1           |
| BUP320RG                                      | <b>E</b> | Plug IP66 20A 250V ac 3 Round Pin Chemical Resistant Grey            | 1           |
| BUP320FRG                                     | <b>G</b> | Plug IP66 20A 250V ac 3 Flat Pin Chemical Resistant Grey             | 1           |
| BUP332RG                                      | <b>H</b> | Plug IP66 32A 250V ac 3 Round Pin Chemical Resistant Grey            | 1           |
| BUP410RG                                      | <b>I</b> | Plug IP66 10A 500V ac 4 Round Pin Chemical Resistant Grey            | 1           |
| BUP420RG                                      | <b>J</b> | Plug IP66 20A 500V ac 4 Round Pin Chemical Resistant Grey            | 1           |
| BUP432RG                                      | <b>K</b> | Plug IP66 32A 500V ac 4 Round Pin Chemical Resistant Grey            | 1           |
| BUP440RG                                      | <b>L</b> | Plug IP66 40A 500V ac 4 Round Pin Chemical Resistant Grey            | 1           |
| BUP450RG                                      | <b>M</b> | Plug IP66 50A 500V ac 4 Round Pin Chemical Resistant Grey            | 1           |
| BUP510RG                                      | <b>N</b> | Plug IP66 10A 500V ac 5 Round Pin Chemical Resistant Grey            | 1           |
| BUP520RG                                      | <b>O</b> | Plug IP66 20A 500V ac 5 Round Pin Chemical Resistant Grey            | 1           |
| BUP532RG                                      | <b>P</b> | Plug IP66 32A 500V ac 5 Round Pin Chemical Resistant Grey            | 1           |
| BUP540RG                                      | <b>Q</b> | Plug IP66 40A 500V ac 5 Round Pin Chemical Resistant Grey            | 1           |
| BUP550RG                                      | <b>R</b> | Plug IP66 50A 500V ac 5 Round Pin Chemical Resistant Grey            | 1           |
| Plugs Angled Series - Chemical Resistant Grey |          |  | Qty Per Box |
| BUPA320RG                                     | <b>G</b> | Plug Angled IP66 20A 250V ac 3 Flat Pin Chemical Resistant Grey      | 1           |
| BUPA332RG                                     | <b>H</b> | Plug Angled IP66 32A 250V ac 3 Round Pin Chemical Resistant Grey     | 1           |
| BUPA410RG                                     | <b>I</b> | Plug Angled IP66 10A 500V ac 4 Round Pin Chemical Resistant Grey     | 1           |
| BUPA420RG                                     | <b>J</b> | Plug Angled IP66 20A 500V ac 4 Round Pin Chemical Resistant Grey     | 1           |
| BUPA432RG                                     | <b>K</b> | Plug Angled IP66 32A 500V ac 4 Round Pin Chemical Resistant Grey     | 1           |
| BUPA440RG                                     | <b>L</b> | Plug Angled IP66 40A 500V ac 4 Round Pin Chemical Resistant Grey     | 1           |
| BUPA450RG                                     | <b>M</b> | Plug Angled IP66 50A 500V ac 4 Round Pin Chemical Resistant Grey     | 1           |
| BUPA510RG                                     | <b>N</b> | Plug Angled IP66 10A 500V ac 5 Round Pin Chemical Resistant Grey     | 1           |
| BUPA520RG                                     | <b>O</b> | Plug Angled IP66 20A 500V ac 5 Round Pin Chemical Resistant Grey     | 1           |
| BUPA532RG                                     | <b>P</b> | Plug Angled IP66 32A 500V ac 5 Round Pin Chemical Resistant Grey     | 1           |
| BUPA540RG                                     | <b>Q</b> | Plug Angled IP66 40A 500V ac 5 Round Pin Chemical Resistant Grey     | 1           |
| BUPA550RG                                     | <b>R</b> | Plug Angled IP66 50A 500V ac 5 Round Pin Chemical Resistant Grey     | 1           |

▲ Note: See Socket Pin Configuration diagrams on page 2



Data Spec  
Sheets



See Trade  
Prices



Web link to  
full range



| Combination Switch Socket Series - Chemical Resistant Orange                           |          |   | Qty Per Box |
|--|----------|---|-------------|
| <b>BUC310RO</b><br><small>*Clipsal - 56C310-RO<br/>^NHP - ISOC310PRO</small>           | <b>A</b> | Combination Switched Socket IP66 10A 250V 3 Flat Pin Chemical Resistant Orange  | 1           |
| <b>BUC315RO</b><br><small>*Clipsal - 56C315-RO<br/>^NHP - ISOC315PRO</small>           | <b>B</b> | Combination Switched Socket IP66 15A 250V 3 Flat Pin Chemical Resistant Orange  | 1           |
| <b>BUC320RO</b><br><small>*Clipsal - 56C320-RO<br/>^NHP - ISOC320PRO</small>           | <b>G</b> | Combination Switched Socket IP66 20A 250V 3 Round Pin Chemical Resistant Orange | 1           |
| <b>BUC320FRO</b><br><small>*Clipsal - 56C320F-RO<br/>^NHP - ISOC320FPRO</small>        | <b>E</b> | Combination Switched Socket IP66 20A 250V 3 Flat Pin Chemical Resistant Orange  | 1           |
| <b>BUC332RO</b><br><small>*Clipsal - 56C332-RO<br/>^NHP - ISOC332PRO</small>           | <b>H</b> | Combination Switched Socket IP66 32A 250V 3 Round Pin Chemical Resistant Orange | 1           |
| <b>BUC410RO</b><br><small>*Clipsal - 56C410-RO<br/>^NHP - ISOC410PRO</small>           | <b>I</b> | Combination Switched Socket IP66 10A 500V 4 Round Pin Chemical Resistant Orange | 1           |
| <b>BUC420RO</b><br><small>*Clipsal - 56C420-RO<br/>^NHP - ISOC420PRO</small>           | <b>J</b> | Combination Switched Socket IP66 20A 500V 4 Round Pin Chemical Resistant Orange | 1           |
| <b>BUC432RO</b><br><small>*Clipsal - 56C432-RO<br/>^NHP - ISOC432PRO</small>           | <b>K</b> | Combination Switched Socket IP66 32A 500V 4 Round Pin Chemical Resistant Orange | 1           |
| <b>BUC440RO</b><br><small>*Clipsal - 56C440-RO<br/>^NHP - ISOC440PRO</small>           | <b>L</b> | Combination Switched Socket IP66 40A 500V 4 Round Pin Chemical Resistant Orange | 1           |
| <b>BUC450RO</b><br><small>*Clipsal - 56C450-RO<br/>^NHP - ISOC450PRO</small>           | <b>M</b> | Combination Switched Socket IP66 50A 500V 4 Round Pin Chemical Resistant Orange | 1           |
| <b>BUC510RO</b><br><small>*Clipsal - 56C510-RO<br/>^NHP - ISOC510PRO</small>           | <b>N</b> | Combination Switched Socket IP66 10A 500V 5 Round Pin Chemical Resistant Orange | 1           |
| <b>BUC520RO</b><br><small>*Clipsal - 56C520-RO<br/>^NHP - ISOC520PRO</small>           | <b>O</b> | Combination Switched Socket IP66 20A 500V 5 Round Pin Chemical Resistant Orange | 1           |
| <b>BUC532RO</b><br><small>*Clipsal - 56C532-RO<br/>^NHP - ISOC532PRO</small>           | <b>P</b> | Combination Switched Socket IP66 32A 500V 5 Round Pin Chemical Resistant Orange | 1           |
| <b>BUC540RO</b><br><small>*Clipsal - 56C540-RO<br/>^NHP - ISOC540PRO</small>           | <b>Q</b> | Combination Switched Socket IP66 40A 500V 5 Round Pin Chemical Resistant Orange | 1           |
| <b>BUC550RO</b><br><small>*Clipsal - 56C550-RO<br/>^NHP - ISOC550PRO</small>           | <b>R</b> | Combination Switched Socket IP66 50A 500V 5 Round Pin Chemical Resistant Orange | 1           |
| Heavy Duty Switch Series - Chemical Resistant Orange                                   |          |   |             |
| <b>BUSW210RO</b><br><small>*Clipsal - 56SW210/2-RO<br/>^NHP - NHPISOSW110PROLB</small> |          | Switch Disconnecter IP66 10A 500V 2 Pole Chemical Resistant Orange              | 1           |
| <b>BUSW220RO</b><br><small>*Clipsal - 56SW220-RO<br/>^NHP - NHPISOSW120PROLB</small>   |          | Switch Disconnecter IP66 20A 500V 2 Pole Chemical Resistant Orange              | 1           |
| <b>BUSW232RO</b><br><small>*Clipsal - 56SW232-RO</small>                               |          | Switch Disconnecter IP66 32A 500V 2 Pole Chemical Resistant Orange              | 1           |
| <b>BUSW310RO</b><br><small>*Clipsal - 56SW310-RO<br/>^NHP - NHPISOSW310PROLB</small>   |          | Switch Disconnecter IP66 10A 500V 3 Pole Chemical Resistant Orange              | 1           |
| <b>BUSW320RO</b><br><small>*Clipsal - 56SW320-RO<br/>^NHP - NHPISOSW320PROLB</small>   |          | Switch Disconnecter IP66 20A 500V 3 Pole Chemical Resistant Orange              | 1           |
| <b>BUSW332RO</b><br><small>*Clipsal - 56SW332-RO<br/>^NHP - NHPISOSW332PROLB</small>   |          | Switch Disconnecter IP66 32A 500V 3 Pole Chemical Resistant Orange              | 1           |
| <b>BUSW363RO</b><br><small>*Clipsal - 56SW363-RO</small>                               |          | Switch Disconnecter IP66 63A 500V 3 Pole Chemical Resistant Orange              | 1           |

▲ Note: See Socket Pin Configuration diagrams on page 2



| Enclosure DIN Series - Chemical Resistant Orange  |  | Qty Per Box |
|---|--|-------------|
| <b>BU4DINRO</b><br><small>*Clipsal - 56CB4N-RO</small>  | Enclosure DIN 4 Pole IP66 Chemical Resistant Orange  | 1           |
| Enclosure Lid Series - Chemical Resistant Orange  |  |             |
| <b>BUL1RO</b><br><small>*Clipsal - 56L1-RO<br/>*NHP - ISOBBL1RO</small>                         | Lid for 1 Gang Enclosures Chemical Resistant Orange  | 1           |
| <b>BUL2RO</b><br><small>*Clipsal - 56L2-RO<br/>*NHP - ISOBBL2RO</small>                         | Lid for 2 Gang Enclosures Chemical Resistant Orange  | 1           |
| Enclosures (Back Box) Series - Chemical Resistant Orange  |  |             |
| <b>BUBB1GRO</b><br><small>*Clipsal - 56E1-RO<br/>*NHP - ISOBB1RO</small>                        | Enclosure Back Box 1 Gang with 32mm and 2x25mm Entries Chemical Resistant Orange           | 1           |
| <b>BUBB1GSRO</b>  | Enclosure Back Box Shallow 1 Gang with 25mm and 2 x 20mm Entries Chemical Resistant Orange | 1           |
| <b>BUBB2GRO</b><br><small>*Clipsal - 56E2-RO<br/>*NHP - ISOBB2RO</small>                        | Enclosure Back Box 2 Gang with 32mm and 2x25mm Entries Chemical Resistant Orange           | 1           |
| <b>BUBB2GSRO</b>  | Enclosure Back Box Shallow 2 Gang with 25mm and 2 x 20mm Entries Chemical Resistant Orange | 1           |
| <b>BUBB4GRO</b><br><small>*Clipsal - 56E4-RO<br/>*NHP - ISOBB4RO</small>                        | Enclosure Back Box 4 Gang with 2x32mm 2x25mm Entries Chemical Resistant Orange             | 1           |
| Sockets Heavy Duty Series - Chemical Resistant Orange   |  |             |
| <b>BUSO310RO</b><br><small>*Clipsal - 66S310-RO<br/>*NHP - ISO30310PROLB<br/>+ ISOBB1RO</small> | <b>A</b> Socket Outlet IP66 10A 250V ac 3 Flat Pin Chemical Resistant Orange               | 1           |
| <b>BUSO315RO</b><br><small>*Clipsal - 66S315-RO<br/>*NHP - ISOBB4RO</small>                     | <b>B</b> Socket Outlet IP66 15A 250V ac 3 Flat Pin Chemical Resistant Orange               | 1           |
| <b>BUSO320RO</b><br><small>*Clipsal - 66S320-RO<br/>*NHP - ISO30320PROLB<br/>+ ISOBB1RO</small> | <b>G</b> Socket Outlet IP66 20A 250V ac 3 Round Pin Chemical Resistant Orange              | 1           |
| <b>BUSO320FRO</b><br><small>*NHP - ISO30320PROLB<br/>+ ISOBB1RO</small>                         | <b>E</b> Socket Outlet IP66 20A 250V ac 3 Flat Pin Chemical Resistant Orange               | 1           |
| <b>BUSO332RO</b><br><small>*NHP - ISO30320PROLB<br/>+ ISOBB1RO</small>                          | <b>H</b> Socket Outlet IP66 32A 250V ac 3 Round Pin Chemical Resistant Orange              | 1           |
| <b>BUSO410RO</b><br><small>*Clipsal - 66S410-RO<br/>*NHP - ISO30410PROLB<br/>+ ISOBB1RO</small> | <b>I</b> Socket Outlet IP66 10A 500V ac 4 Round Pin Chemical Resistant Orange              | 1           |
| <b>BUSO420RO</b><br><small>*Clipsal - 66S420-RO<br/>*NHP - ISO30420PROLB<br/>+ ISOBB1RO</small> | <b>J</b> Socket Outlet IP66 20A 500V ac 4 Round Pin Chemical Resistant Orange              | 1           |
| <b>BUSO432RO</b><br><small>*NHP - ISO30432PROLB<br/>+ ISOBB1RO</small>                          | <b>K</b> Socket Outlet IP66 32A 500V ac 4 Round Pin Chemical Resistant Orange              | 1           |
| <b>BUSO440RO</b><br><small>*NHP - ISO30440PROLB<br/>+ ISOBB1RO</small>                          | <b>L</b> Socket Outlet IP66 40A 500V ac 4 Round Pin Chemical Resistant Orange              | 1           |
| <b>BUSO450RO</b><br><small>*NHP - ISO30450PROLB<br/>+ ISOBB1RO</small>                          | <b>M</b> Socket Outlet IP66 50A 500V ac 4 Round Pin Chemical Resistant Orange              | 1           |
| <b>BUSO510RO</b><br><small>*NHP - ISO30510PROLB<br/>+ ISOBB1RO</small>                          | <b>N</b> Socket Outlet IP66 10A 500V ac 5 Round Pin Chemical Resistant Orange              | 1           |
| <b>BUSO520RO</b><br><small>*Clipsal - 66S520-RO<br/>*NHP - ISO30520PROLB<br/>+ ISOBB1RO</small> | <b>O</b> Socket Outlet IP66 20A 500V ac 5 Round Pin Chemical Resistant Orange              | 1           |
| <b>BUSO532RO</b><br><small>*Clipsal - 66S532-RO<br/>*NHP - ISO30532PROLB<br/>+ ISOBB1RO</small> | <b>P</b> Socket Outlet IP66 32A 500V ac 5 Round Pin Chemical Resistant Orange              | 1           |
| <b>BUSO540RO</b><br><small>*NHP - ISO30540PROLB<br/>+ ISOBB1RO</small>                          | <b>Q</b> Socket Outlet IP66 40A 500V ac 5 Round Pin Chemical Resistant Orange              | 1           |
| <b>BUSO550RO</b><br><small>*Clipsal - 66S550-RO<br/>*NHP - ISO30550PROLB<br/>+ ISOBB1RO</small> | <b>R</b> Socket Outlet IP66 50A 500V ac 5 Round Pin Chemical Resistant Orange              | 1           |

▲ Note: See Socket Pin Configuration diagrams on page 2



Data Spec  
Sheets

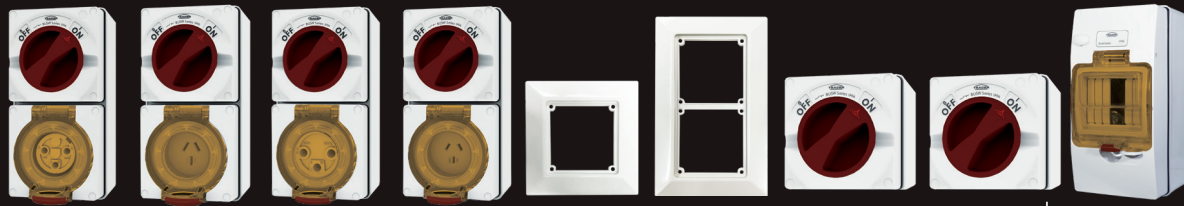


See Trade  
Prices



Web link to  
full range

**COMBINATION SWITCHED SOCKETS  
AND SWITCHES**



**Combination Switch Socket Series - Chemical Resistant White**

|   |  | Qty Per Box |
|---|--|-------------|
| <b>BUC310RW</b><br><small>*Clipsal - 56C310-RW<br/>*NHP - ISOC310PRW</small>    | <b>A</b> Combination Switched Socket IP66 10A 250V ac 3 Flat Pin Chemical Resistant White  | 1           |
| <b>BUC315RW</b><br><small>*Clipsal - 56C315-RW<br/>*NHP - ISOC315PRW</small>    | <b>B</b> Combination Switched Socket IP66 15A 250V ac 3 Flat Pin Chemical Resistant White  | 1           |
| <b>BUC320RW</b><br><small>*Clipsal - 56C320-RW<br/>*NHP - ISOC320PRW</small>    | <b>G</b> Combination Switched Socket IP66 20A 250V ac 3 Round Pin Chemical Resistant White | 1           |
| <b>BUC320FRW</b><br><small>*Clipsal - 56C320F-RW<br/>*NHP - ISOC320FPRW</small> | <b>E</b> Combination Switched Socket IP66 20A 250V ac 3 Flat Pin Chemical Resistant White  | 1           |
| <b>BUC332RW</b><br><small>*Clipsal - 56C332-RW<br/>*NHP - ISOC332PRW</small>    | <b>H</b> Combination Switched Socket IP66 32A 250V ac 3 Round Pin Chemical Resistant White | 1           |
| <b>BUC410RW</b><br><small>*Clipsal - 56C410-RW<br/>*NHP - ISOC410PRW</small>    | <b>I</b> Combination Switched Socket IP66 10A 500V ac 4 Round Pin Chemical Resistant White | 1           |
| <b>BUC420RW</b><br><small>*Clipsal - 56C420-RW<br/>*NHP - ISOC420PRW</small>    | <b>J</b> Combination Switched Socket IP66 20A 500V ac 4 Round Pin Chemical Resistant White | 1           |
| <b>BUC432RW</b><br><small>*Clipsal - 56C432-RW<br/>*NHP - ISOC432PRW</small>    | <b>K</b> Combination Switched Socket IP66 32A 500V ac 4 Round Pin Chemical Resistant White | 1           |
| <b>BUC440RW</b>   | <b>L</b> Combination Switched Socket IP66 40A 500V ac 4 Round Pin Chemical Resistant White | 1           |
| <b>BUC450RW</b>   | <b>M</b> Combination Switched Socket IP66 50A 500V ac 4 Round Pin Chemical Resistant White | 1           |
| <b>BUC510RW</b><br><small>*Clipsal - 56C510-RW<br/>*NHP - ISOC510PRW</small>    | <b>N</b> Combination Switched Socket IP66 10A 500V ac 5 Round Pin Chemical Resistant White | 1           |
| <b>BUC520RW</b><br><small>*Clipsal - 56C520-RW<br/>*NHP - ISOC520PRW</small>    | <b>O</b> Combination Switched Socket IP66 20A 500V ac 5 Round Pin Chemical Resistant White | 1           |
| <b>BUC532RW</b><br><small>*Clipsal - 56C532-RW<br/>*NHP - ISOC532PRW</small>    | <b>P</b> Combination Switched Socket IP66 32A 500V ac 5 Round Pin Chemical Resistant White | 1           |
| <b>BUC540RW</b><br><small>*Clipsal - 56C540-RW</small>                          | <b>Q</b> Combination Switched Socket IP66 40A 500V ac 5 Round Pin Chemical Resistant White | 1           |
| <b>BUC550RW</b><br><small>*Clipsal - 56C550-RW</small>                          | <b>R</b> Combination Switched Socket IP66 50A 500V ac 5 Round Pin Chemical Resistant White | 1           |

**Flush Surround - Chemical Resistant White**

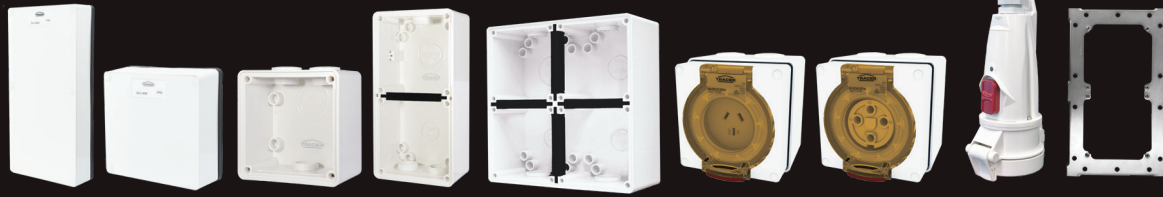
|   |  |     |
|---|--|-----|
| <b>BUFS1GRW</b><br><small>*Clipsal - 56FA1-RW</small> | Flush Surround 1 Gang Chemical Resistant White | TBC |
| <b>BUFS2GRW</b><br><small>*Clipsal - 56FA2-RW</small> | Flush Surround 2 Gang Chemical Resistant White | TBC |

**Heavy Duty Switch Series - Chemical Resistant White**

|  |   |   |
|--|---|---|
| <b>BUSW210RW</b><br><small>*Clipsal - 56SW110-RW<br/>*NHP - ISOSW110PRWLB</small>            | Switch Disconnecter IP66 10A 500V 2 Pole Chemical Resistant White | 1 |
| <b>BUSW220RW</b><br><small>*Clipsal - 56SW120-RW</small>                                     | Switch Disconnecter IP66 20A 500V 2 Pole Chemical Resistant White | 1 |
| <b>BUSW232RW</b>   | Switch Disconnecter IP66 32A 500V 2 Pole Chemical Resistant White | 1 |
| <b>BUSW310RW</b><br><small>*Clipsal - 56SW310-RW<br/>*NHP - ISOSW310PRWLB + ISOBB1RW</small> | Switch Disconnecter IP66 10A 500V 3 Pole Chemical Resistant White | 1 |
| <b>BUSW320RW</b><br><small>*Clipsal - 56SW320-RW<br/>*NHP - ISOSW320PRWLB + ISOBB1RW</small> | Switch Disconnecter IP66 20A 500V 3 Pole Chemical Resistant White | 1 |
| <b>BUSW332RW</b><br><small>*Clipsal - 56SW332-RW<br/>*NHP - ISOSW332PRWLB + ISOBB1RW</small> | Switch Disconnecter IP66 32A 500V 3 Pole Chemical Resistant White | 1 |
| <b>BUSW363RW</b><br><small>*Clipsal - 56SW363-RW</small>                                     | Switch Disconnecter IP66 63A 500V 3 Pole Chemical Resistant White | 1 |

**Enclosure DIN Series - Chemical Resistant White**

|  |  |   |
|--|--|---|
| <b>BU4DINRW</b><br><small>*Clipsal - 56CB4N-RW<br/>*NHP - ISORCDNPRW</small> | Enclosure DIN 4 Pole IP66 Chemical Resistant White | 1 |
|--|--|---|



| Enclosure Lid Series - Chemical Resistant Grey   |   | Qty Per Box |
|--|---|-------------|
| <b>BUL1RW</b><br><small>*Clipsal - 56L1-RW<br/>^NHP - ISOL1H1RW</small>                      | Lid for 1 Gang Enclosures Chemical Resistant White  | 1           |
| <b>BUL2RW</b><br><small>*Clipsal - 56L2-RW<br/>^NHP - ISOL1H2RW</small>                      | Lid for 2 Gang Enclosures Chemical Resistant White  | 1           |
| BUBB Enclosures (Back Box) Series - Chemical Resistant White                                 |   |             |
| <b>BUBB1GRW</b><br><small>*Clipsal - 56E1-RW<br/>^NHP - ISOBB1RW</small>                     | Enclosure Back Box 1 Gang with 32mm and 2x25mm Entries Chemical Resistant White           | 1           |
| <b>BUBB1GSRW</b>   | Enclosure Back Box Shallow 1 Gang with 25mm and 2 x 20mm Entries Chemical Resistant White | 1           |
| <b>BUBB2GRW</b><br><small>*Clipsal - 56E2-RW<br/>^NHP - ISOBB2RW</small>                     | Enclosure Back Box 2 Gang with 32mm and 2x25mm Entries Chemical Resistant White           | 1           |
| <b>BUBB2GSRW</b>   | Enclosure Back Box Shallow 2 Gang with 25mm and 2 x 20mm Entries Chemical Resistant White | 1           |
| <b>BUBB4GRW</b><br><small>*NHP - ISOBB4RW</small>  | Enclosure Back Box 4 Gang with 2 x 32mm and 2 x 25mm Entries Chemical Resistant White     | 1           |
| BUSO Sockets Heavy Duty Series - Chemical Resistant White                                    |   |             |
| <b>BUSO310RW</b><br><small>*Clipsal - 56SO310-RW<br/>^NHP - ISOSO310PRWLB + ISOBB1RW</small> | <b>A</b> Socket Outlet IP66 10A 250V ac 3 Flat Pin Chemical Resistant White               | 1           |
| <b>BUSO315RW</b><br><small>*Clipsal - 56SO315-RW<br/>^NHP - ISOSO315PRWLB + ISOBB1RW</small> | <b>B</b> Socket Outlet IP66 15A 250V ac 3 Flat Pin Chemical Resistant White               | 1           |
| <b>BUSO320RW</b><br><small>*Clipsal - 56SO320-RW<br/>^NHP - ISOSO320PRWLB + ISOBB1RW</small> | <b>G</b> Socket Outlet IP66 20A 250V ac 3 Round Pin Chemical Resistant White              | 1           |
| <b>BUSO320FRW</b><br><small>*NHP - ISOSO320PRWLB + ISOBB1RW</small>                          | <b>E</b> Socket Outlet IP66 20A 250V ac 3 Flat Pin Chemical Resistant White               | 1           |
| <b>BUSO332RW</b><br><small>*NHP - ISOSO332PRWLB + ISOBB1RW</small>                           | <b>H</b> Socket Outlet IP66 32A 250V ac 3 Round Pin Chemical Resistant White              | 1           |
| <b>BUSO410RW</b><br><small>*NHP - ISOSO410PRWLB + ISOBB1RW</small>                           | <b>I</b> Socket Outlet IP66 10A 500V ac 4 Round Pin Chemical Resistant White              | 1           |
| <b>BUSO420RW</b><br><small>*NHP - ISOSO420PRWLB + ISOBB1RW</small>                           | <b>J</b> Socket Outlet IP66 20A 500V ac 4 Round Pin Chemical Resistant White              | 1           |
| <b>BUSO432RW</b><br><small>*NHP - ISOSO432PRWLB + ISOBB1RW</small>                           | <b>K</b> Socket Outlet IP66 32A 500V ac 4 Round Pin Chemical Resistant White              | 1           |
| <b>BUSO440RW</b><br><small>*NHP - ISOSO440PRWLB + ISOBB1RW</small>                           | <b>L</b> Socket Outlet IP66 40A 500V ac 4 Round Pin Chemical Resistant White              | 1           |
| <b>BUSO450RW</b><br><small>*NHP - ISOSO450PRWLB + ISOBB1RW</small>                           | <b>M</b> Socket Outlet IP66 50A 500V ac 4 Round Pin Chemical Resistant White              | 1           |
| <b>BUSO510RW</b><br><small>*NHP - ISOSO510PRWLB + ISOBB1RW</small>                           | <b>N</b> Socket Outlet IP66 10A 500V ac 5 Round Pin Chemical Resistant White              | 1           |
| <b>BUSO520RW</b><br><small>*NHP - ISOSO520PRWLB + ISOBB1RW</small>                           | <b>O</b> Socket Outlet IP66 20A 500V ac 5 Round Pin Chemical Resistant White              | 1           |
| <b>BUSO532RW</b><br><small>*NHP - ISOSO532PRWLB + ISOBB1RW</small>                           | <b>P</b> Socket Outlet IP66 32A 500V ac 5 Round Pin Chemical Resistant White              | 1           |
| <b>BUSO540RW</b><br><small>*NHP - ISOSO540PRWLB + ISOBB1RW</small>                           | <b>Q</b> Socket Outlet IP66 40A 500V ac 5 Round Pin Chemical Resistant White              | 1           |
| <b>BUSO550RW</b><br><small>*NHP - ISOSO550PRWLB + ISOBB1RW</small>                           | <b>R</b> Socket Outlet IP66 50A 500V ac 5 Round Pin Chemical Resistant White              | 1           |
| Socket Suspension Switched - Chemical Resistant White  |   |             |
| <b>BUSS</b><br><small>*Clipsal - 56SP0310-RW</small>   | Socket Suspension Switched IP66 10A 250V ac 3 Pin Chemical Resistant White                | TBC         |
| <b>BUSS15</b><br><small>*Clipsal - 56SP0315-RW</small>                                       | Socket Suspension Switched IP66 15A 250V ac 3 Pin Chemical Resistant White                | TBC         |
| Flush Surround Mounting Bracket Metal - Chemical Resistant White                             |   |             |
| <b>BUFSMB1G</b>  | Flush Surround Mounting Bracket Metal 1 Gang for Buffalo Chemical Resistant White Range   | TBC         |
| <b>BUFSMB2G</b><br><small>*Clipsal - 56FA2B</small>  | Flush Surround Mounting Bracket Metal 2 Gang for Buffalo Chemical Resistant White Range   | TBC         |

▲ Note: See Socket Pin Configuration diagrams on page 2



Data Spec  
Sheets



See Trade  
Prices

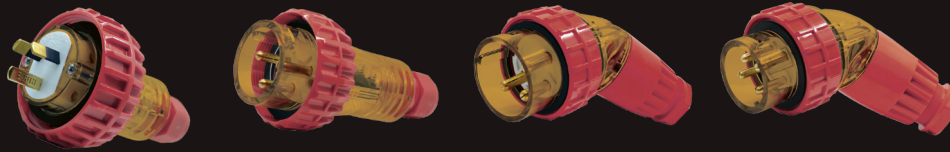


Web link to  
full range

**EXTENSION SOCKETS**



| BUEXSO Socket Extension Cord Series - Chemical Resistant Orange and White |          |   | Qty Per Box |
|---|----------|---|-------------|
| <b>BUEXSO310ROW</b><br><small>*Clipsal - 56CSC310-RO</small>              | <b>A</b> | Socket Extension Cord IP66 10A 250V ac 3 Flat Pin Chemical Resistant Orange and White         | 1           |
| <b>BUEXSO315ROW</b><br><small>*Clipsal - 56CSC315-RO</small>              | <b>B</b> | Socket Extension Cord IP66 15A 250V ac 3 Flat Pin Chemical Resistant Orange and White         | 1           |
| <b>BUEXSO320ROW</b><br><small>*NHP - ISOEXSO320PRO</small>                | <b>G</b> | Socket Extension Cord IP66 20A 250V ac 3 Round Pin Chemical Resistant Orange and White        | 1           |
| <b>BUEXSO320FROW</b>  | <b>E</b> | Socket Extension Cord IP66 20A 250V ac 3 Flat Pin Chemical Resistant Orange and White         | 1           |
| <b>BUEXSO332ROW</b><br><small>*NHP - ISOEXSO332PRO</small>                | <b>H</b> | Socket Extension Cord IP66 32A 250V ac 3 Round Pin Chemical Resistant Orange and White        | 1           |
| <b>BUEXSO410ROW</b><br><small>*NHP - ISOEXSO410PRO</small>                | <b>I</b> | Socket Extension Cord IP66 10A 500V ac 4 Round Pin Chemical Resistant Orange and White        | 1           |
| <b>BUEXSO420ROW</b><br><small>*NHP - ISOEXSO420PRO</small>                | <b>J</b> | Socket Extension Cord IP66 20A 500V ac 4 Round Pin Chemical Resistant Orange and White        | 1           |
| <b>BUEXSO432ROW</b><br><small>*NHP - ISOEXSO432PRO</small>                | <b>K</b> | Socket Extension Cord IP66 32A 500V ac 4 Round Pin Chemical Resistant Orange and White        | 1           |
| <b>BUEXSO440ROW</b><br><small>*NHP - ISOEXSO440PRO</small>                | <b>L</b> | Socket Extension Cord IP66 40A 500V ac 4 Round Pin Chemical Resistant Orange and White        | 1           |
| <b>BUEXSO450ROW</b><br><small>*NHP - ISOEXSO450PRO</small>                | <b>M</b> | Socket Extension Cord IP66 50A 500V ac 4 Round Pin Chemical Resistant Orange and White        | 1           |
| <b>BUEXSO510ROW</b><br><small>*NHP - ISOEXSO510PRO</small>                | <b>N</b> | Socket Extension Cord IP66 10A 500V ac 5 Round Pin Chemical Resistant Orange and White        | 1           |
| <b>BUEXSO520ROW</b><br><small>*NHP - ISOEXSO520PRO</small>                | <b>O</b> | Socket Extension Cord IP66 20A 500V ac 5 Round Pin Chemical Resistant Orange and White        | 1           |
| <b>BUEXSO532ROW</b><br><small>*NHP - ISOEXSO532PRO</small>                | <b>P</b> | Socket Extension Cord IP66 32A 500V ac 5 Round Pin Chemical Resistant Orange and White        | 1           |
| <b>BUEXSO540ROW</b><br><small>*NHP - ISOEXSO540PRO</small>                | <b>Q</b> | Socket Extension Cord IP66 40A 500V ac 5 Round Pin Chemical Resistant Orange and White        | 1           |
| <b>BUEXSO550ROW</b><br><small>*NHP - ISOEXSO550PRO</small>                | <b>R</b> | Socket Extension Cord IP66 50A 500V ac 5 Round Pin Chemical Resistant Orange and White        | 1           |
| Angled Socket Extension Cord Series - Chemical Resistant Grey             |          |   |             |
| <b>BUEXSOA320ROW</b>  | <b>E</b> | Socket Extension Cord Angled IP66 20A 250V ac 3 Round Pin Chemical Resistant Orange and White | 1           |
| <b>BUEXSOA332ROW</b>  | <b>H</b> | Socket Extension Cord Angled IP66 32A 250V ac 3 Round Pin Chemical Resistant Orange and White | 1           |
| <b>BUEXSOA410ROW</b>  | <b>I</b> | Socket Extension Cord Angled IP66 10A 500V ac 4 Round Pin Chemical Resistant Orange and White | 1           |
| <b>BUEXSOA420ROW</b>  | <b>J</b> | Socket Extension Cord Angled IP66 20A 500V ac 4 Round Pin Chemical Resistant Orange and White | 1           |
| <b>BUEXSOA432ROW</b>  | <b>K</b> | Socket Extension Cord Angled IP66 32A 500V ac 4 Round Pin Chemical Resistant Orange and White | 1           |
| <b>BUEXSOA440ROW</b>  | <b>L</b> | Socket Extension Cord Angled IP66 40A 500V ac 4 Round Pin Chemical Resistant Orange and White | 1           |
| <b>BUEXSOA450ROW</b>  | <b>M</b> | Socket Extension Cord Angled IP66 50A 500V ac 4 Round Pin Chemical Resistant Orange and White | 1           |
| <b>BUEXSOA510ROW</b>  | <b>N</b> | Socket Extension Cord Angled IP66 10A 500V ac 5 Round Pin Chemical Resistant Orange and White | 1           |
| <b>BUEXSOA520ROW</b>  | <b>O</b> | Socket Extension Cord Angled IP66 20A 500V ac 5 Round Pin Chemical Resistant Orange and White | 1           |
| <b>BUEXSOA532ROW</b>  | <b>P</b> | Socket Extension Cord Angled IP66 32A 500V ac 5 Round Pin Chemical Resistant Orange and White | 1           |
| <b>BUEXSOA540ROW</b>  | <b>Q</b> | Socket Extension Cord Angled IP66 40A 500V ac 5 Round Pin Chemical Resistant Orange and White | 1           |
| <b>BUEXSOA550ROW</b>  | <b>R</b> | Socket Extension Cord Angled IP66 50A 500V ac 5 Round Pin Chemical Resistant Orange and White | 1           |



| BUP Plugs Series - Chemical Resistant Orange and White                             |          |  | Qty Per Box |
|--|----------|--|-------------|
| <b>BUP310LROW</b><br><small>*Clipsal - 56P310SL-RO<br/>^NHP - ISOPS310LPRO</small> | <b>A</b> | Plug IP66 10A 250V ac 2 Flat and 1 Round Pin Chemical Resistant Orange and White | 1           |
| <b>BUP310ROW</b><br><small>*Clipsal - 56P310-RO<br/>^NHP - ISOPS310PRO</small>     | <b>C</b> | Plug IP66 10A 250V ac 3 Flat Pin Chemical Resistant Orange and White             | 1           |
| <b>BUP315ROW</b><br><small>*Clipsal - 56P315-RO<br/>^NHP - ISOPS315PRO</small>     | <b>B</b> | Plug IP66 15A 250V ac 3 Flat Pin Chemical Resistant Orange and White             | 1           |
| <b>BUP320ROW</b><br><small>*Clipsal - 56P320-RO<br/>^NHP - ISOPS320PRO</small>     | <b>G</b> | Plug IP66 20A 250V ac 3 Round Pin Chemical Resistant Orange and White            | 1           |
| <b>BUP320FROW</b><br><small>*Clipsal - 56P320F-RO<br/>^NHP - ISOPS320FPRO</small>  | <b>E</b> | Plug IP66 20A 250V ac 3 Flat Pin Chemical Resistant Orange and White             | 1           |
| <b>BUP332ROW</b><br><small>*Clipsal - 56P332-RO<br/>^NHP - ISOPS332PRO</small>     | <b>H</b> | Plug IP66 32A 250V ac 3 Round Pin Chemical Resistant Orange and White            | 1           |
| <b>BUP410ROW</b><br><small>*Clipsal - 56P410-RO<br/>^NHP - ISOPS410PRO</small>     | <b>I</b> | Plug IP66 10A 500V ac 4 Round Pin Chemical Resistant Orange and White            | 1           |
| <b>BUP420ROW</b><br><small>*Clipsal - 56P420-RO<br/>^NHP - ISOPS420PRO</small>     | <b>J</b> | Plug IP66 20A 500V ac 4 Round Pin Chemical Resistant Orange and White            | 1           |
| <b>BUP432ROW</b><br><small>*Clipsal - 56P432-RO<br/>^NHP - ISOPS432PRO</small>     | <b>K</b> | Plug IP66 32A 500V ac 4 Round Pin Chemical Resistant Orange and White            | 1           |
| <b>BUP440ROW</b><br><small>*Clipsal - 56P440-RO<br/>^NHP - ISOPS440PRO</small>     | <b>L</b> | Plug IP66 40A 500V ac 4 Round Pin Chemical Resistant Orange and White            | 1           |
| <b>BUP450ROW</b><br><small>*Clipsal - 56P450-RO<br/>^NHP - ISOPS450PRO</small>     | <b>M</b> | Plug IP66 50A 500V ac 4 Round Pin Chemical Resistant Orange and White            | 1           |
| <b>BUP510ROW</b><br><small>*Clipsal - 56P510-RO<br/>^NHP - ISOPS510PRO</small>     | <b>N</b> | Plug IP66 10A 500V ac 5 Round Pin Chemical Resistant Orange and White            | 1           |
| <b>BUP520ROW</b><br><small>*Clipsal - 56P520-RO<br/>^NHP - ISOPS520PRO</small>     | <b>O</b> | Plug IP66 20A 500V ac 5 Round Pin Chemical Resistant Orange and White            | 1           |
| <b>BUP532ROW</b><br><small>*Clipsal - 56P532-RO<br/>^NHP - ISOPS532PRO</small>     | <b>P</b> | Plug IP66 32A 500V ac 5 Round Pin Chemical Resistant Orange and White            | 1           |
| <b>BUP540ROW</b><br><small>*Clipsal - 56P540-RO<br/>^NHP - ISOPS540PRO</small>     | <b>Q</b> | Plug IP66 40A 500V ac 5 Round Pin Chemical Resistant Orange and White            | 1           |
| <b>BUP550ROW</b><br><small>*Clipsal - 56P550-RO<br/>^NHP - ISOPS550PRO</small>     | <b>R</b> | Plug IP66 50A 500V ac 5 Round Pin Chemical Resistant Orange and White            | 1           |

| BUP Plugs Angled Series - Chemical Resistant Orange and White |          |  | Qty Per Box |
|---|----------|--|-------------|
| <b>BUPA320ROW</b><br><small>*Clipsal - 56PA320-RO</small>     | <b>G</b> | Plug Angled IP66 20A 250V ac 3 Round Pin Chemical Resistant Orange and White | 1           |
| <b>BUPA332ROW</b><br><small>*Clipsal - 56PA332-RO</small>     | <b>H</b> | Plug Angled IP66 32A 250V ac 3 Round Pin Chemical Resistant Orange and White | 1           |
| <b>BUPA410ROW</b><br><small>*Clipsal - 56PA410-RO</small>     | <b>I</b> | Plug Angled IP66 10A 500V ac 4 Round Pin Chemical Resistant Orange and White | 1           |
| <b>BUPA420ROW</b><br><small>*Clipsal - 56PA420-RO</small>     | <b>J</b> | Plug Angled IP66 20A 500V ac 4 Round Pin Chemical Resistant Orange and White | 1           |
| <b>BUPA432ROW</b><br><small>*Clipsal - 56PA432-RO</small>     | <b>K</b> | Plug Angled IP66 32A 500V ac 4 Round Pin Chemical Resistant Orange and White | 1           |
| <b>BUPA440ROW</b><br><small>*Clipsal - 56PA440-RO</small>     | <b>L</b> | Plug Angled IP66 40A 500V ac 4 Round Pin Chemical Resistant Orange and White | 1           |
| <b>BUPA450ROW</b><br><small>*Clipsal - 56PA450-RO</small>     | <b>M</b> | Plug Angled IP66 50A 500V ac 4 Round Pin Chemical Resistant Orange and White | 1           |
| <b>BUPA510ROW</b><br><small>*Clipsal - 56PA510-RO</small>     | <b>N</b> | Plug Angled IP66 10A 500V ac 5 Round Pin Chemical Resistant Orange and White | 1           |
| <b>BUPA520ROW</b><br><small>*Clipsal - 56PA520-RO</small>     | <b>O</b> | Plug Angled IP66 20A 500V ac 5 Round Pin Chemical Resistant Orange and White | 1           |
| <b>BUPA532ROW</b><br><small>*Clipsal - 56PA532-RO</small>     | <b>P</b> | Plug Angled IP66 32A 500V ac 5 Round Pin Chemical Resistant Orange and White | 1           |
| <b>BUPA540ROW</b><br><small>*Clipsal - 56PA540-RO</small>     | <b>Q</b> | Plug Angled IP66 40A 500V ac 5 Round Pin Chemical Resistant Orange and White | 1           |
| <b>BUPA550ROW</b><br><small>*Clipsal - 56PA550-RO</small>     | <b>R</b> | Plug Angled IP66 50A 500V ac 5 Round Pin Chemical Resistant Orange and White | 1           |

▲ Note: See Socket Pin Configuration diagrams on page 2

## ALTERNATIVE CROSS REFERENCE CHARTS

| TRADER         | *Clipsal      | ^NHP         | TRADER         | *Clipsal    | ^NHP          | TRADER         | *Clipsal        | ^NHP          |
|----------------|---------------|--------------|----------------|-------------|---------------|----------------|-----------------|---------------|
| <b>Buffalo</b> |               |              | <b>Buffalo</b> |             |               | <b>Buffalo</b> |                 |               |
| BUC310         | 56C310-GY     | ISOC310PG    | BUSO315        | 56S0315-GY  | ISOS0315PG    | BUPBSTASW      | XB5AA31         | D7PF301PX10   |
| BUC310L        | 56C310L-GY    | ISOC310LPG   | BUSO320        | 56S0320-GY  | ISOS0320PG    | BUPBSTOSW      | XB5AA42         | D7PF402PX01   |
| BUC315         | 56C315-GY     | ISOC315PG    | BUSO320F       | 56S0320F-GY | ISOS0320FPG   | BUBB1G         | 56E1-GY         | ISOBB1G       |
| BUC320         | 56C320-GY     | ISOC320PG    | BUSO332        | 56S0332-GY  | ISOS0332PG    | BUBB1GS        | 56E1-GY         | ISOBBS1G      |
| BUC320F        | 56C320F-GY    | ISOC320FPG   | BUSO410        | 56S0410-GY  | ISOS0410PG    | BUBB2G         | 56E2-GY         | ISOBB2G       |
| BUC332         | 56C332-GY     | ISOC332PG    | BUSO420        | 56S0420-GY  | ISOS0420PG    | BUBB2GS        | 56E2-GY         | ISOBBS2G      |
| BUC410         | 56C410-GY     | ISOC410PG    | BUSO432        | 56S0432-GY  | ISOS0432PG    | BUBB2GD        | 56E2-GY         | ISOBB2EDG     |
| BUC420         | 56C420-GY     | ISOC420PG    | BUSO432E3HLE   | 67CSC432/3  | -             | BUBB3G         | 56E3-GY         | ISOBB3G       |
| BUC432         | 56C432-GY     | ISOC432PG    | BUSO440        | 56S0440-GY  | ISOS0440PG    | BUBB4G         | 56E4-GY         | ISOBB4G       |
| BUC440         | 56C440-GY     | ISOC440PG    | BUSO450        | 56S0450-GY  | ISOS0450PG    | BUBB4GV        | 56E4VH-GY       | ISOBB4VHG     |
| BUC450         | 56C450-GY     | ISOC450PG    | BUSO510        | 56S0510-GY  | ISOS0510PG    | BUBB6G         | 56E6-GY         | ISOBB6G       |
| BUC510         | 56C510-GY     | ISOC510PG    | BUSO520        | 56S0520-GY  | ISOS0520PG    | BUL1           | 56L1-GY         | ISOBBL1G      |
| BUC520         | 56C520-GY     | ISOC520PG    | BUSO532        | 56S0532-GY  | ISOS0532PG    | BUL2           | 56L2-GY         | ISOBBL2G      |
| BUC532         | 56C532-GY     | ISOC532PG    | BUSO540        | 56S0540-GY  | ISOS0540PG    | BUJB1          | 56JB1-GY        | -             |
| BUC540         | 56C540-GY     | ISOC540PG    | BUSO550        | 56S0550-GY  | ISOS0550PG    | BUJB2          | 56JB2-GY        | -             |
| BUC550         | 56C550-GY     | ISOC550PG    | BUEXO310       | 56CSC310-E0 | ISOEX310P     | BU4DIN         | 56CB4-GY        | -             |
| BUC310RC30N    | 56SC310RC-GY  | ISOC310RCDPG | BUEXO315       | 56CSC315-E0 | ISOEX315P     | BU4DINLED      | 56CB4NM         | ISORCDNPG     |
| BUC315RC30N    | 56SC315RC-GY  | ISOC315RCDPG | BUEXO320       | 56CSC320-E0 | ISOEX320P     | BU4DINKIT      | 56DINASS        | -             |
| BUC320RC30N    | -             | ISOC320RCDPG | BUEXO332       | 56CSC332-E0 | ISOEX332P     | BUBRIDGE       | 56B-BK          | -             |
| BUC332RC30N    | -             | ISOC332RCDPG | BUEXO410       | 56CSC410-E0 | ISOEX410P     | BUCAP9         | 9-LG            | -             |
| BUC510RC30N    | 56C510RC-GY   | ISOC510RCDPG | BUEXO420       | 56CSC420-E0 | ISOEX420P     | BUSPOK         | 56SPOK          | ISOBKBB       |
| BUC520RC30N    | 56C520RC-GY   | ISOC520RCDPG | BUEXO432       | 56CSC432-E0 | ISOEX432P     | BUSB13         | 56CB13-GY       | -             |
| BUC532RC30N    | 56C532RC-GY   | ISOC532RCDPG | BUEXO440       | 56CSC440-E0 | ISOEX440P     | BUBRD          | 56D             | -             |
| BUC540RC30N    | 56C540RC-GY   | ISOC540RCDPG | BUEXO450       | 56CSC450-E0 | ISOEX450P     | BUHPG1G        | 56HPG1-CM       | -             |
| BUC550RC30N    | -             | ISOC550RCDPG | BUEXO510       | 56CSC510-E0 | ISOEX510P     | BUHPG2G        | 56HPG2/2-CM     | -             |
| BURCD20DP30    | 56RC-GY       | -            | BUEXO520       | 56CSC520-E0 | ISOEX520P     | BUMF           | 56MF            | -             |
| BUSW210        | 56SW210/2-GY  | ISOSW110PG   | BUEXO532       | 56CSC532-E0 | ISOEX532P     | BUPOA50        | 56POK           | -             |
| BUSW220        | 56SW220-GY    | ISOSW120PG   | BUEXO540       | 56CSC540-E0 | ISOEX540P     | BUSO215P32LE   | 56S0215/32LE-GY | -             |
| BUSW220CO      | 56SW220CO-GY  | -            | BUEXO550       | 56CSC550-E0 | ISOEX550P     | BUC310LE       | 56C310LE-GY     | -             |
| BUSW232        | 56SW232-GY    | ISOSW132PG   | BUP310         | 56P310-E0   | ISOPS310P     | BUC315LE       | 56C315LE-GY     | -             |
| BUSW310        | 56SW310-GY    | ISOSW310PG   | BUP310L        | 56P310SL-E0 | ISOPS310SLP   | BUC320FLE      | 56C320FLE-GY    | -             |
| BUSW320        | 56SW320-GY    | ISOSW320PG   | BUP310RP       | 56P310RP-E0 | -             | BUC320LE       | 56C320LE-GY     | -             |
| BUSW320R       | 56SW320R-GY   | -            | BUP315         | 56P315-E0   | ISOPS315P     | BUC332LE       | 56C332LE-GY     | -             |
| BUSW332        | 56SW332-GY    | ISOSW332PG   | BUP320         | 56P320-E0   | ISOPS320P     | BUC410LE       | 56C410LE-GY     | -             |
| BUSW363        | 56SW363-GY    | -            | BUP320F        | 56P320F-E0  | ISOPS320FP    | BUC420LE       | 56C420LE-GY     | -             |
| BUSW420        | 56SW420-GY    | ISOSW420PG   | BUP332         | 56P332-E0   | ISOPS332P     | BUC432LE       | 56C432LE-GY     | -             |
| BUSW432        | 56SW432-GY    | ISOSW432PG   | BUP410         | 56P410-E0   | ISOPS410P     | BUC450LE       | 56C450LE-GY     | -             |
| BUSW463        | 56SW463-GY    | -            | BUP420         | 56P420-E0   | ISOPS420P     | BUC510LE       | 56C510LE-GY     | -             |
| BUSW1102       | 56SSR/3       | -            | BUP432         | 56P432-E0   | ISOPS432P     | BUC520LE       | 56C520LE-GY     | -             |
| BUSUNSW        | 56SSR/3       | -            | BUP440         | 56P440-E0   | ISOPS440P     | BUC532LE       | 56C532LE-GY     | -             |
| BUSW220K1      | 56K1SW220     | ISOK1SW120PG | BUP450         | 56P450-E0   | ISOPS450P     | BUC550LE       | 56C550LE-GY     | -             |
| BUSW220K2      | -             | ISOK2SW120PG | BUP510         | 56P510-E0   | ISOPS510P     | BUSW210LE      | 56SW210LE-GY    | ISOSW110PGLB  |
| BUSW320K1      | 56K1SW320     | ISOK1SW320PG | BUP520         | 56P520-E0   | ISOPS520P     | BUSW220LE      | 56SW220LE-GY    | ISOSW120PGLB  |
| BUSW320K2      | 56K2SW320     | ISOK2SW320PG | BUP532         | 56P532-E0   | ISOPS532P     | BUSW220COLE    | 56SW220COLE-GY  | -             |
| BUSW332K1      | 56K1SW332     | ISOK1SW332PG | BUP540         | 56P540-E0   | ISOPS540P     | BUSW232LE      | 56SW232LE-GY    | ISOSW132PGLB  |
| BUSW332K2      | 56K2SW332     | ISOK2SW332PG | BUP550         | 56P550-E0   | ISOPS550P     | BUSW310LE      | 56SW310LE-GY    | ISOSW310PGLB  |
| BUAI310        | 56AI310-GY    | ISOAI310PG   | BUPA320        | 56PA320-E0  | -             | BUSW320LE      | 56SW320LE-GY    | ISOSW320PGLB  |
| BUAI315        | 56AI315-GY    | ISOAI315PG   | BUPA332        | 56PA332-E0  | -             | BUSW320RLE     | 56SW320RLE-GY   | -             |
| BUAI320        | 56AI320-GY    | ISOAI320PG   | BUPA410        | 56PA410-E0  | -             | BUSW332LE      | 56SW332LE-GY    | ISOSW332PGLB  |
| BUAI332        | 56AI332-GY    | ISOAI332PG   | BUPA420        | 56PA420-E0  | ISOPA420P     | BUSW363LE      | 56SW363LE-GY    | -             |
| BUAI410        | 56AI410-GY    | ISOAI410PG   | BUPA432        | 56PA432-E0  | ISOPA432P     | BUSW420LE      | 56SW420LE-GY    | -             |
| BUAI420        | 56AI420-GY    | ISOAI420PG   | BUPA440        | 56PA440-E0  | ISOPA440P     | BUSW432LE      | 56SW432LE-GY    | -             |
| BUAI432        | 56AI432-GY    | ISOAI432PG   | BUPA450        | 56PA450-E0  | ISOPA450P     | BUSW463LE      | 56SW463LE-GY    | -             |
| BUAI440        | -             | ISOAI440PG   | BUPA510        | 56PA510-E0  | -             | BUAI310LE      | 56AI310LE-GY    | ISOAI310PGLB  |
| BUAI450        | 56AI450-GY    | ISOAI450PG   | BUPA520        | 56PA520-E0  | ISOPA520P     | BUAI315LE      | 56AI315LE-GY    | ISOAI315PGLB  |
| BUAI510        | 56AI510-GY    | ISOAI510PG   | BUPA532        | 56PA532-E0  | ISOPA532P     | BUSOAU310LE    | 56S0310ALE-GY   | -             |
| BUAI520        | 56AI520-GY    | ISOAI520PG   | BUPA540        | 56PA540-E0  | ISOPA540P     | BUSOAU315LE    | 56S0315ALE-GY   | -             |
| BUAI532        | 56AI532-GY    | ISOAI532PG   | BUPA550        | 56PA550-E0  | ISOPA550P     | BUSO310LE      | 56S0310LE-GY    | ISOS0310PGLB  |
| BUAI540        | 56AI540-GY    | ISOAI540PG   | BUPBCBNC       | ZBE102      | D7X01         | BUSO310LLE     | 56S0310LLE-GY   | ISOS0310LPGLB |
| BUAI550        | 56AI550-GY    | ISOAI550PG   | BUPBCBNO       | ZBE101      | D7X10         | BUSO310RPLE    | 56S0310RPLE-GY  | -             |
| BUAICAP        | 56PC2         | 3PS9PC       | BUPBESTO       | 56PBS1      | 800F1YM3      | BUSO315LE      | 56S0315LE-GY    | ISOS0315PGLB  |
| BUSOAU310      | 56S0310A-GY   | -            | BUPBESTOSW     | XB5AS8442   | 800FPMT44PX01 | BUSO320FLE     | 56S0320FLE-GY   | ISOS0320FPGLB |
| BUSOAU315      | 56S0315A-GY   | -            | BUPBSTA        | 56PB        | -             | BUSO320LE      | 56S0320LE-GY    | ISOS0320PGLB  |
| BUSO215P32     | 56S0215/32-GY | -            | BUPBSTACOV1    | 56L1/22-GY  | ISOL1H1G      | BUSO332LE      | 56S0332LE-GY    | ISOS0332PGLB  |
| BUSO310        | 56S0310-GY    | ISOS0310PG   | BUPBSTACOV2    | -           | ISOL1H2G      | BUSO410LE      | 56S0410LE-GY    | ISOS0410PGLB  |
| BUSO310L       | 56S0310L-GY   | ISOS0310LPG  | BUPBSTAESTO    | 56/2PBS1-GY | -             | BUSO420LE      | 56S0420LE-GY    | ISOS0420PGLB  |
| BUSO310RP      | 56S0310RP-GY  | -            | BUPBSTASTO     | 56/2PB-GY   | -             |                |                 |               |

## ALTERNATIVE CROSS REFERENCE CHARTS

| TRADER         | *Clipsal     | ^NHP          | TRADER         | *Clipsal   | ^NHP                      | TRADER         | *Clipsal    | ^NHP                     |
|----------------|--------------|---------------|----------------|------------|---------------------------|----------------|-------------|--------------------------|
| <b>Buffalo</b> |              |               | <b>Buffalo</b> |            |                           | <b>Buffalo</b> |             |                          |
| BUS0432LE      | 56S0432LE-GY | ISOS0432PGLB  | BUL2RO         | 56L2-RO    | ISOBBL2RO                 | BUS0440RW      | -           | ISOS0440PRWL-B+ISOBBL1RW |
| BUS0440LE      | -            | ISOS0440PGLB  | BUBB1GR0       | 56E1-RO    | -ISOBBL1RO                | BUS0450RW      | -           | ISOS0450PRWL-B+ISOBBL1RW |
| BUS0450LE      | 56S0450LE-GY | ISOS0450PGLB  | BUBB2GR0       | 56E2-RO    | ISOBBL2RO                 | BUS0510RW      | -           | ISOS0510PRWL-B+ISOBBL1RW |
| BUS0510LE      | 56S0510LE-GY | ISOS0510PGLB  | BUBB4GR0       | 56E4-RO    | ISOBBL4RO                 | BUS0520RW      | -           | ISOS0520PRWL-B+ISOBBL1RW |
| BUS0520LE      | 56S0520LE-GY | ISOS0520PGLB  | BUS0310RO      | 56S0310-RO | ISOS0310PROL-B+ISOBBL1RO  | BUS0532RW      | -           | ISOS0532PRWL-B+ISOBBL1RW |
| BUS0532LE      | 56S0532LE-GY | ISOS0532PGLB  | BUS0315RO      | 56S0315-RO | ISOS0315PROL-B+ISOBBL1RO  | BUS0540RW      | -           | ISOS0540PRWL-B+ISOBBL1RW |
| BUS0540LE      | 56S0540LE-GY | ISOS0540PGLB  | BUS0320FRO     | -          | ISOS0320FPROL-B+ISOBBL1RO | BUS0550RW      | -           | ISOS0550PRWL-B+ISOBBL1RW |
| BUS0550LE      | 56S0550LE-GY | ISOS0550PGLB  | BUS0320RO      | 56S0320-RO | ISOS0320PROL-B+ISOBBL1RO  | BUSS           | 56SP0310-RW | -                        |
| BU4DINLE       | 56CB4-GY     | -             | BUS0332RO      | -          | ISOS0332PROL-B+ISOBBL1RO  | BUSS15         | 56SP0315-RW | -                        |
| BU4DINLEDE     | 56CB4N-GY    | ISORCDNPG     | BUS0410RO      | 56S0410-RO | ISOS0410PROL-B+ISOBBL1RO  | BUFSMB2G       | 56FA2B      | -                        |
| BUMAE2GLE      | 56/32LE-GY   | -             | BUS0420RO      | 56S0420-RO | ISOS0420PROL-B+ISOBBL1RO  | BUEXS0310ROW   | 56CSC310-RO | -                        |
| BUC310RG       | 56C310-CG    | -             | BUS0432RO      | -          | ISOS0432PROL-B+ISOBBL1RO  | BUEXS0315ROW   | 56CSC315-RO | -                        |
| BUC315RG       | 56C315-CG    | -             | BUS0440RO      | -          | ISOS0440PROL-B+ISOBBL1RO  | BUEXS0320ROW   | -           | ISOEXS0320PRO            |
| BUC320FRG      | 56C320F-CG   | -             | BUS0450RO      | -          | ISOS0450PROL-B+ISOBBL1RO  | BUEXS0332ROW   | -           | ISOEXS0332PRO            |
| BUC320RG       | 56C320-CG    | -             | BUS0510RO      | -          | ISOS0510PROL-B+ISOBBL1RO  | BUEXS0410ROW   | -           | ISOEXS0410PRO            |
| BUC332RG       | 56C332-CG    | -             | BUS0520RO      | 56S0520-RO | ISOS0520PROL-B+ISOBBL1RO  | BUEXS0420ROW   | -           | ISOEXS0420PRO            |
| BUC410RG       | 56C410-CG    | -             | BUS0532RO      | 56S0532-RO | ISOS0532PROL-B+ISOBBL1RO  | BUEXS0432ROW   | -           | ISOEXS0432PRO            |
| BUC420RG       | 56C420-CG    | -             | BUS0540RO      | -          | ISOS0540PROL-B+ISOBBL1RO  | BUEXS0440ROW   | -           | ISOEXS0440PRO            |
| BUC432RG       | 56C432-CG    | -             | BUS0550RO      | 56S0550-RO | ISOS0550PROL-B+ISOBBL1RO  | BUEXS0450ROW   | -           | ISOEXS0450PRO            |
| BUC440RG       | 56C440-CG    | -             | BUC310RW       | 56C310-RW  | ISOC310PRW                | BUEXS0510ROW   | -           | ISOEXS05100PRO           |
| BUC450RG       | 56C450-CG    | -             | BUC315RW       | 56C315-RW  | ISOC315PRW                | BUEXS0520ROW   | -           | ISOEXS0520PRO            |
| BUC510RG       | 56C510-CG    | -             | BUC320FRW      | 56C320F-RW | ISOC320FPRW               | BUEXS0532ROW   | -           | ISOEXS0532PRO            |
| BUC520RG       | 56C520-CG    | -             | BUC320RW       | 56C320-RW  | ISOC320PRW                | BUEXS0540ROW   | -           | ISOEXS0540PRO            |
| BUC532RG       | 56C532-CG    | -             | BUC332RW       | 56C332-RW  | ISOC332PRW                | BUEXS0550ROW   | -           | ISOEXS0550PRO            |
| BUC540RG       | 56C540-CG    | -             | BUC410RW       | 56C410-RW  | ISOC410PRW                | BUP310LROW     | 56P310SL-RO | ISOPS310LPRO             |
| BUC550RG       | 56C550-CG    | -             | BUC420RW       | 56C420-RW  | ISOC420PRW                | BUP310ROW      | 56P310-RO   | ISOPS550PRO              |
| BUSW210RG      | 56SW210/2-CG | -             | BUC432RW       | 56C432-RW  | ISOC432PRW                | BUP315ROW      | 56P315-RO   | ISOPS315PRO              |
| BUSW220RG      | 56SW220-CG   | -             | BUC510RW       | 56C510-RW  | ISOC510PRW                | BUP320FROW     | 56P320F-RO  | ISOPS320FPRO             |
| BUSW232RG      | 56SW232/2-CG | -             | BUC520RW       | 56C520-RW  | ISOC520PRW                | BUP320ROW      | 56P320-RO   | ISOPS320PRO              |
| BUSW310RG      | 56SW310-CG   | -             | BUC532RW       | 56C532-RW  | ISOC532PRW                | BUP332ROW      | 56P332-RO   | ISOPS332PRO              |
| BUSW320RG      | 56SW320-CG   | -             | BUC540RW       | 56C540-RW  | -                         | BUP410ROW      | 56P410-RO   | ISOPS410PRO              |
| BUSW332RG      | 56SW332-CG   | -             | BUC550RW       | 56C550-RW  | -                         | BUP420ROW      | 56P420-RO   | ISOPS420PRO              |
| BUSW363RG      | 56SW363-CG   | -             | BUFS1GRW       | 56FA1-RW   | -                         | BUP432ROW      | 56P432-RO   | ISOPS432PRO              |
| BU4DINRG       | 56CB4N-CG    | -             | BUFS2GRW       | 56FA2-RW   | -                         | BUP440ROW      | 56P440-RO   | ISOPS440PRO              |
| BUL1RG         | 56L1-CG      | -             | BUSW210RW      | 56SW110-RW | ISOSW110PRWLB             | BUP450ROW      | 56P450-RO   | ISOPS450PRO              |
| BUL2RG         | 56L2-CG      | -             | BUSW220RW      | 56SW120-RW | -                         | BUP510ROW      | 56P510-RO   | ISOPS510PRO              |
| BUBB1GRG       | 56E1-CG      | -             | BUSW310RW      | 56SW310-RW | ISOSW310PRWL-B+ISOBBL1RW  | BUP520ROW      | 56P520-RO   | ISOPS520PRO              |
| BUBB2GRG       | 56E2-CG      | -             | BUSW320RW      | 56SW320-RW | ISOSW320PRWL-B+ISOBBL1RW  | BUP532ROW      | 56P532-RO   | ISOPS532PRO              |
| BUBB4GRG       | 56E4-CG      | -             | BUSW332RW      | 56SW332-RW | ISOSW332PRWL-B+ISOBBL1RW  | BUP540ROW      | 56P540-RO   | ISOPS540PRO              |
| BUS0310RG      | 56S0310-CG   | -             | BUSW363RW      | 56SW363-RW | -                         | BUP550ROW      | 56P550-RO   | ISOPS550PRO              |
| BUS0315RG      | 56S0315-CG   | -             | BU4DINRW       | 56CB4N-RW  | ISORCDNPRW                | BUPA320ROW     | 56PA320-RO  | -                        |
| BUS0320RG      | 56S0320-CG   | -             | BUL1RW         | 56L1-RW    | ISOL1H1RW                 | BUPA332ROW     | 56PA332-RO  | -                        |
| BUC310RO       | 56C310-RO    | ISOC310PRO    | BUL2RW         | 56L2-RW    | ISOL1H2RW                 | BUPA410ROW     | 56PA410-RO  | -                        |
| BUC315RO       | 56C315-RO    | ISOC315PRO    | BUBB1GRW       | 56E1-RW    | ISOBBL1RW                 | BUPA420ROW     | 56PA420-RO  | -                        |
| BUC320FRO      | 56C320F-RO   | ISOC320FPRO   | BUBB2GRW       | 56E2-RW    | ISOBBL2RW                 | BUPA432ROW     | 56PA432-RO  | -                        |
| BUC320RO       | 56C320-RO    | ISOC320PRO    | BUBB4GRW       | -          | ISOBBL4RW                 | BUPA440ROW     | 56PA440-RO  | -                        |
| BUC332RO       | 56C332-RO    | ISOC332PRO    | BUS0310RW      | 56S0310-RW | ISOS0310PRWL-B+ISOBBL1RW  | BUPA450ROW     | 56PA450-RO  | -                        |
| BUC410RO       | 56C410-RO    | ISOC410PRO    | BUS0315RW      | 56S0315-RW | ISOS0315PRWL-B+ISOBBL1RW  | BUPA510ROW     | 56PA510-RO  | -                        |
| BUC420RO       | 56C420-RO    | ISOC420PRO    | BUS0320FRW     | -          | ISOS0320FPRWL-B+ISOBBL1RW | BUPA520ROW     | 56PA520-RO  | -                        |
| BUC432RO       | 56C432-RO    | ISOC432PRO    | BUS0320RW      | 56S0320-RW | ISOS0320PRWL-B+ISOBBL1RW  | BUPA532ROW     | 56PA532-RO  | -                        |
| BUC440RO       | 56C440-RO    | ISOC440PRO    | BUS0332RW      | -          | ISOS0332PRWL-B+ISOBBL1RW  | BUPA540ROW     | 56PA540-RO  | -                        |
| BUC450RO       | 56C450-RO    | ISOC450PRO    | BUS0410RW      | -          | ISOS0410PRWL-B+ISOBBL1RW  | BUPA550ROW     | 56PA550-RO  | -                        |
| BUC510RO       | 56C510-RO    | ISOC510PRO    | BUS0420RW      | -          | ISOS0420PRWL-B+ISOBBL1RW  |                |             |                          |
| BUC520RO       | 56C520-RO    | ISOC520PRO    | BUS0432RW      | -          | ISOS0432PRWL-B+ISOBBL1RW  |                |             |                          |
| BUC532RO       | 56C532-RO    | ISOC532PRO    |                |            |                           |                |             |                          |
| BUC540RO       | 56C540-RO    | ISOC540PRO    |                |            |                           |                |             |                          |
| BUC550RO       | 56C550-RO    | ISOC550PRO    |                |            |                           |                |             |                          |
| BUSW210RO      | 56SW210/2-RO | ISOSW110PROLB |                |            |                           |                |             |                          |
| BUSW220RO      | 56SW220-RO   | ISOSW120PROLB |                |            |                           |                |             |                          |
| BUSW232RO      | 56SW232-RO   | -             |                |            |                           |                |             |                          |
| BUSW310RO      | 56SW310-RO   | ISOSW310PROLB |                |            |                           |                |             |                          |
| BUSW320RO      | 56SW320-RO   | ISOSW320PROLB |                |            |                           |                |             |                          |
| BUSW332RO      | 56SW332-RO   | ISOSW332PROLB |                |            |                           |                |             |                          |
| BUSW363RO      | 56SW-363-RO  | -             |                |            |                           |                |             |                          |
| BU4DINRO       | 56CB4N-RO    | -             |                |            |                           |                |             |                          |
| BUL1RO         | 56L1-RO      | ISOBBL1RO     |                |            |                           |                |             |                          |

**BUFFALO**  <sup>TM</sup>



100 Years of Gerard Electrical Tradition

**1300 301 838**

[service@gsme.com.au](mailto:service@gsme.com.au)

[gsme.com.au](http://gsme.com.au)

