

# INDUSTRIAL THAT STACKS UP

TRADER  
BISON  TM

  
100 Years of Gerard Electrical Tradition

Trader has introduced a selective range of IP67 plugs in accordance with IEC 60309 and AS/NZS 60309 in the Bison range.

The plugs have initially been offered as a solution to interact with fixed sockets in the IEC format offered in several of the TRADER Buffalo range for general use in 6h (hour) and refrigerated containers in the 3h format.

The Bison range however is much more than just for this purpose and can provide an interactive solution for many other IEC 60309 based products in industry.

The durable structure and hydrant lock provides excellent performance for many applications.



1300 301 838



[gsme.com.au](http://gsme.com.au)

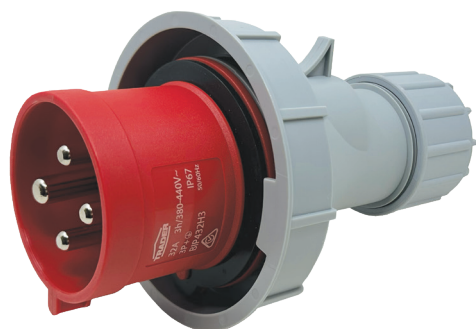


[service@gsme.com.au](mailto:service@gsme.com.au)



TRADERGSM/





**BIP432H3**



**BIP432H6**



**BIP563H6**

*Cat No. Plugs	Description	Current Rating (A)	Pin Config	Bison Pin Config Code	Terminal Size	Maximum Conductor Size (mm <sup>2</sup> )	Minimum Cable Diameter (mm2)	Maximum Cable Diameter (mm2)	Matching Plug
BIP432H3	Plug IP67 32A 380V 440V ac 4 Pin 3h Earth	32	4	C	5.2	6	5.2	16	N/A
BIP432H6	Plug IP67 32A 380V 415V ac 4 Pin 6h Earth	32	4	B	5.2	6	5.2	16	N/A
BIP563H6	Plug IP67 63A 380V 415V ac 5 Pin 6h Earth	63	5	D	7.1	6	7.15	25	BIEXSO563H6



**BIEXSO563H6**

*Cat No. Extension Sockets	Description	Current Rating (A)	Pin Config	Bison Pin Config Code	Terminal Size	Maximum Conductor Size (mm <sup>2</sup> )	Minimum Cable Diameter (mm2)	Maximum Cable Diameter (mm2)	Matching Plug
BIEXSO563H6	Socket Extension Cord IP67 63A 380V 415V ac 5 Pin 6h Earth	63	5	D	7.1	6	7.15	25	BIP563H6

## Pin Configurations for Bison



**A** 32A  
3 Pin  
Earth at 6



**B** 32A  
4 Pin  
Earth at 6



**C** 32A  
4 Pin  
Earth at 3



**D** 63A  
5 Pin  
Earth at 6

