



100 Years of Gerard Electrical Tradition

# Bear Smoke Alarm

## Bear Photoelectric Smoke Alarms Wireless Ready

BESMOKEY10 Photoelectric Smoke Alarm, Wireless Ready can be hard wired and interconnected wirelessly.

BESMOKEY10BW Photoelectric Smoke Alarm is Wireless ONLY with a Non Removeable battery.

Link up to 40 units.



Order Code  
**BESMOKEY10**



Order Code  
**BESMOKEY10BW**



**BEAR**  <sup>TM</sup>



### BESMOKEY Series Info Sheet

See information sheet for  
recommended usage  
and interconnect  
configuration examples

### Wireless Module

Wireless interconnection module  
for BESMOKEY10



Order Code  
**BESMOKEY10WM**

### Wireless Remote

To be used once smoke alarms are  
interconnected wirelessly



1 Year Warranty  
on Battery



Order Code  
**BESMOKEY10REM**

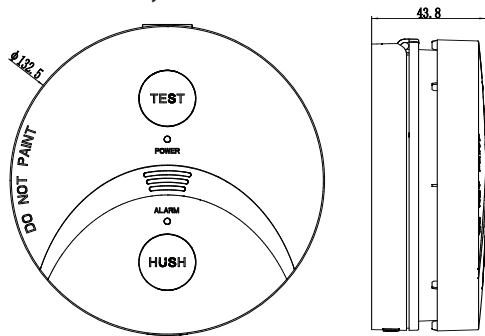
BESMOKEY10 Smoke Alarms come with a 10 Year Warranty from date of purchase. BESMOKEY10 Accessories are warranted for 7 Years from date of purchase. Proof of Purchase is required for Warranty Claims – please see [www.gsme.com.au](http://www.gsme.com.au) for details regarding warranty claims.

Available through your Electrical Wholesaler

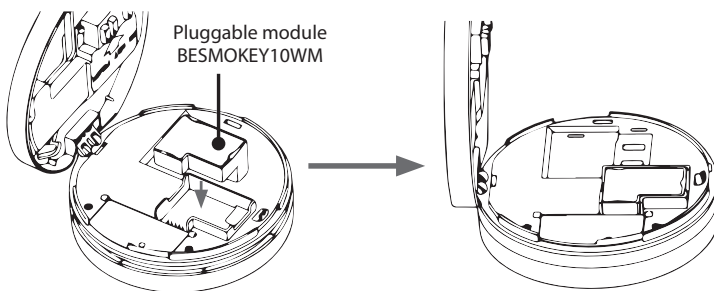
Trader's Photoelectric Smoke Alarm's Wireless Ready are ready for use by Australian Electrical Contractors.

## BESMOKEY10

- Photoelectric Sensing Technology.
- Activfire Listed.
- Complies with AS3786:2014.
- Main power source 220-240 V AC 50 Hz.
- Secondary power source DC 3V battery 10 Year Lithium.
- Interconnection Max. 24 alarms (wired 150m maximum).
- Wireless upgradeable by clipping in BESMOKEY10WM and linking with other alarms that also contain the module.
- 4 hard wired Terminals that accommodate 2 x 2.5mm<sup>2</sup> (A, E-Loop, N, I-connect) for hard wired applications.
- Surface Mount Base Plate with Large Cable Terminals.
- Suitable for Ceiling or Wall Mounting.
- Alarm volume ≥ 85dB(A) @ 3m complying with ISO8201 alarm pattern.
- Operating Temperature 0 °C to 40 °C.
- Maximum humidity for installation: 5-95% Relative Humidity.
- Red LED Alarm Status Indication.
- Green LED AC Mains Power Indication.
- Separate test and Hush Buttons to assist with wireless linking.
- Insect Screen protects Sensing Chamber.
- Sleek Styling.
- The BESMOKEY10 with BESMOKEY10WM can also pair to BESMOKEY10BW 10 Year Lithium Wireless Smoke Alarm.
- 10 Year warranty.

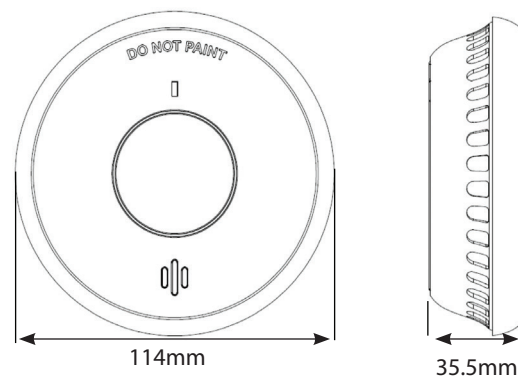


**BESMOKEY10WM is required to make BESMOKEY10 Wireless:**

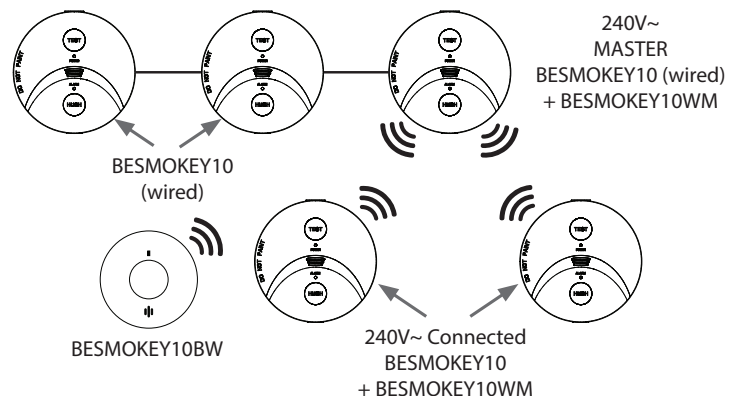


## BESMOKEY10BW

- Photoelectric Sensing Technology.
- Activfire Listed.
- Complies with AS3786:2014.
- Main power source: Built-in DC3V Lithium battery (battery not replaceable).
- Interconnection Max. 40 alarms.
- Wireless distance Max. 100 metres in free field.
- Wireless Frequency test 433.42MHZ
- Suitable for Ceiling or Wall Mounting.
- Alarm volume ≥ 85dB(A) @ 3m complying with ISO8201 alarm pattern.
- Operating Temperature 0 °C - 45 °C.
- Maximum humidity for installation: < 93 % Relative Humidity.
- Central test & Activation Button
- Red LED Alarm Status Indication.
- Insect Screen protects Sensing Chamber.
- Sleek Styling.
- The BESMOKEY10BW can also pair to BESMOKEY10 with BESMOKEY10WM installed.
- 10 Year warranty.



## NETWORK CONFIGURATION EXAMPLE



To make wireless, before removing battery tag add BESMOKEY10WM, then connect battery and power. Follow instruction to pair the wireless alarms in the network.

Example of a network using BESMOKEY10 combined with hard wired and interconnected (using cable) with a single "master" alarm with the BESMOKEY10WM module fitted communicating with others in the system that are operating from the 10 Year Lithium battery.

Remote control available BESMOKEY10REM.