

Infrared Motion Sensors

The Arctic Owl 360° Infrared Motion Sensors use passive Infrared technology with manual override.

Order Code

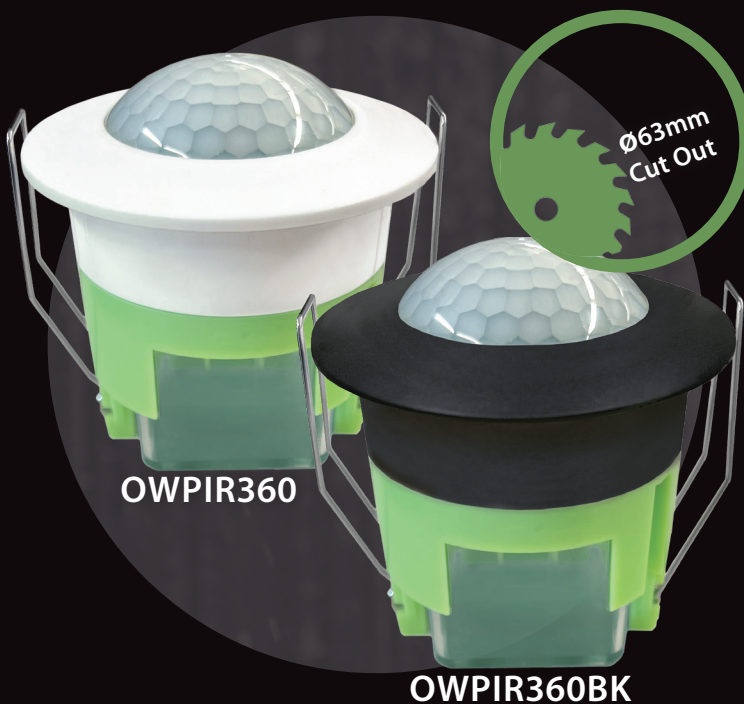
OWPIR360

OWPIR360BK

OWPIR360S

OWPIR360SBK

OW = Arctic Owl PIR = Passive Infrared
360 = 360° BK = Black S = Small

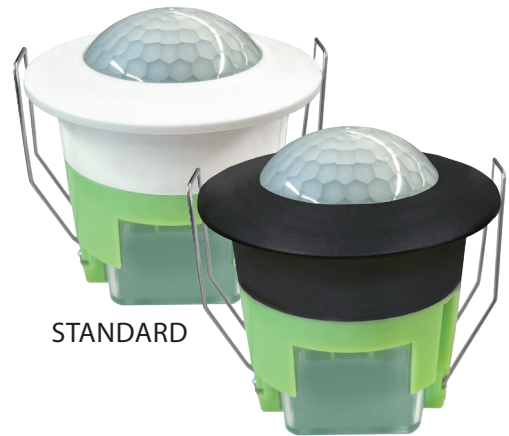


Available through your Electrical Wholesaler

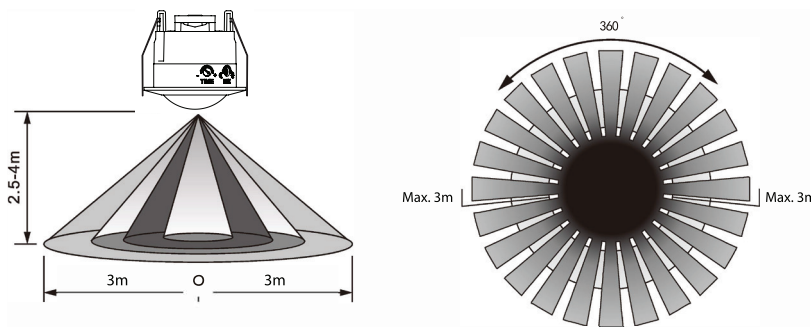


Arctic Owl Infrared Motion Sensor Indoor 360°

- Sensor uses Passive Infrared Technology.
- Manual override for greater convenience.
- 360 degree detection with range of 3m radius at a height of 2.4m - 4m.
- "ON" time between 10 seconds and 7 minutes - between sensing trigger.
- Suitable for loop in / loop out applications in ceilings.
- Easy mounting and adjustment.
- Parallel connections with multiple fittings.
- **Rated Load: 2000W Max and 1000W for fluoro energy saving lamps.**
- **63mm cut out.**
- Colours available: White or Black.
- Depth into ceiling 57mm.
- Larger Terminals.



STANDARD

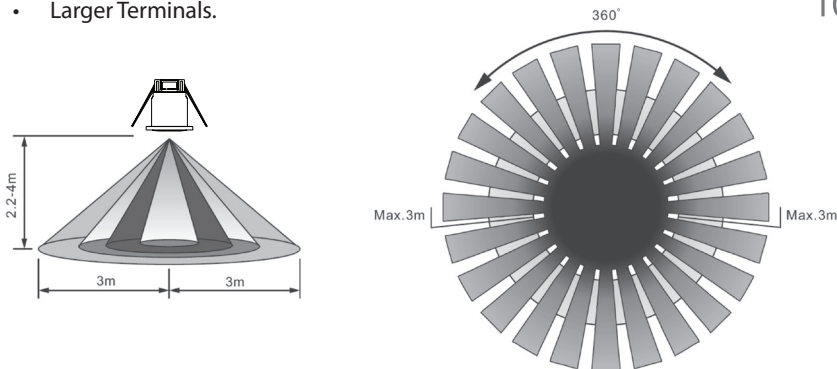


Arctic Owl Infrared Motion Sensor Indoor 360° Small

- Sensor uses Passive Infrared Technology.
- Manual override for greater convenience.
- 360 degree detection with range of 3m radius at a height of 2.4m - 4m.
- "ON" time between 10 seconds and 7 minutes - between sensing trigger.
- Suitable for loop in / loop out applications in ceilings.
- Easy mounting and adjustment.
- Parallel connections with multiple fittings.
- **Rated Load: 800W Max and 400W for fluoro energy saving lamps.**
- **40mm cut out.**
- Colours available White or Black.
- Depth into ceiling 51mm
- Larger Terminals.



100 Years of Gerard Electrical Tradition



SMALL

