



100 Years of Gerard Electrical Tradition



# WOLVERINE

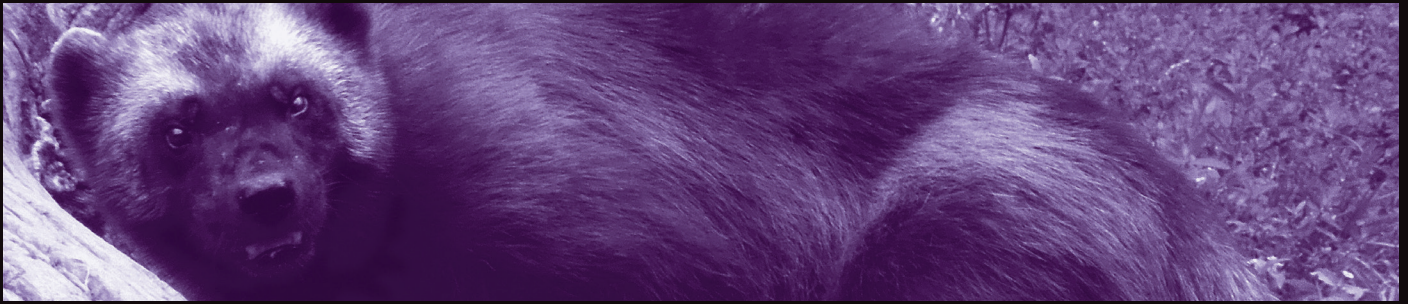
## CIRCUIT PROTECTION

CALL  
1300 301 838

WWW  
[gsme.com.au](http://gsme.com.au)

EMAIL  
[service@gsme.com.au](mailto:service@gsme.com.au)





## TO SERVE & PROTECT

Welcome to Wolverine, a new range of circuit protection devices designed for Australian residential and commercial environments.

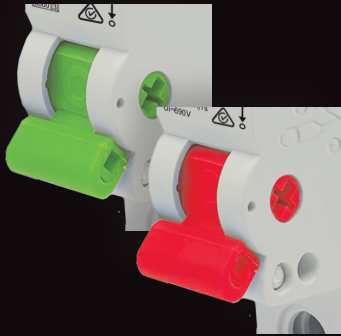
Designed and developed locally, electrical contractors can be assured of quality components, manufactured to the highest standards. The range is easy to identify with colour coded toggles and includes everything from Main Switches, Residual Current Devices RCDs, Miniature Circuit Breakers MCBs and Residual Current Devices with overcurrent protection RCBOs.

We've listened to electrical contractors and created a range that offers fast and flexible installation that meets maximum safety requirements in accordance with Australian Standards. Wolverine will accommodate all DIN Rail switchboard designs and common busbar arrangements. This catalogue represents the first stage of a major new addition to the Trader range with more to come in the future.

Wolverine is ready to serve and protect your next switchboard install.

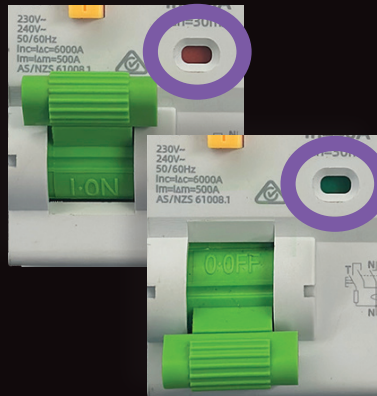


# DISTINCTIVELY WOLVERINE



## COLOUR CODED TOGGLES

Easy to identify Main Switches, RCD, MCB & RCBO devices



## STATUS INDICATION

Instantly recognisable:  
Green = OFF, Red = ON



## LINE OR LOAD

Can be wired top or bottom



## QR CODE

Scan QR code on each product to view installation instructions



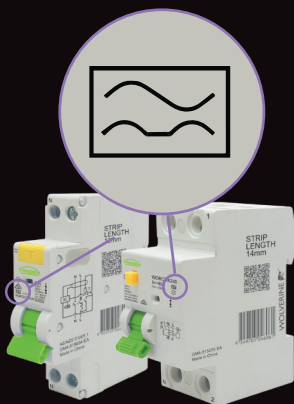
## MCB/MAIN SWITCH COMBO

63A MCB circuit breaker with Red toggle, suitable for use as Main Switch



## BREAKING CAPACITY

MCB - 6kA,  
RCBO - 4.5kA and 6kA



## RCBO TYPE A

Sensitive to sinusoidal and unidirectional currents, present in electronic devices



## FITS COMMON BUSBAR ARRANGEMENTS

Single pole, 1P+N and 3 pole installations



## DIN RAIL MOUNTED

Fits securely with all switchboard DIN Rail systems



Data Spec  
Sheets



See Trade  
Prices



Wolverine MCBs are available in C curve tripping characteristic and ideal for applications for the protection of resistive and inductive loads with low inrush current. Suitable for protecting distribution lines, lighting lines and motor circuits with high connecting currents, equipment in office and residential buildings. **63AMP MODELS MARKED WITH R (INDICATING RED TOGGLE) IN THE CATALOGUE NUMBER** are configured for MCB/Main Switch applications. Available in 1 pole and 3 pole. Complies with AS/NZS and IEC 60898-1.

MCB Series		Qty Per Box
WOMCB6110 *MX9MC110 ^MOD6110 †MSN110	MCB Miniature Circuit Breaker 6kA 1 Pole 10 Amp C Curve 230V 240V ac 1 Module	12
WOMCB6116 *MX9MC116 ^MOD6116 †MSN116	MCB Miniature Circuit Breaker 6kA 1 Pole 16 Amp C Curve 230V 240V ac 1 Module	12
WOMCB6120 *MX9MC120 ^MOD6120 †MSN120	MCB Miniature Circuit Breaker 6kA 1 Pole 20 Amp C Curve 230V 240V ac 1 Module	12
WOMCB6125 *MX9MC125 ^MOD6125 †MSN125	MCB Miniature Circuit Breaker 6kA 1 Pole 25 Amp C Curve 230V 240V ac 1 Module	12
WOMCB6132 *MX9MC132 ^MOD6132 †MSN132	MCB Miniature Circuit Breaker 6kA 1 Pole 32 Amp C Curve 230V 240V ac 1 Module	12
WOMCB6163 *MX9MC163 ^MOD6163 †MSN163	MCB Miniature Circuit Breaker 6kA 1 Pole 63 Amp C Curve 230V 240V ac 1 Module	12
WOMCB6163R *MX9MC163R †MSN163R <b>RED TOGGLE</b>	MCB Miniature Circuit Breaker 6kA 1 Pole 63 Amp C Curve 230V 240V ac 1 Module Main Switch Suitable	12
WOMCB6310 *MX9MC310 ^MOD6310 †MSN310	MCB Miniature Circuit Breaker 6kA 3 Pole 10 Amp C Curve 400V 415V ac 3 Module	4
WOMCB6316 *MX9MC316 ^MOD6316 †MSN316	MCB Miniature Circuit Breaker 6kA 3 Pole 16 Amp C Curve 400V 415V ac 3 Module	4
WOMCB6320 *MX9MC320 ^MOD6320 †MSN320	MCB Miniature Circuit Breaker 6kA 3 Pole 20 Amp C Curve 400V 415V ac 3 Module	4
WOMCB6325 *MX9MC325 ^MOD6325 †MSN325	MCB Miniature Circuit Breaker 6kA 3 Pole 25 Amp C Curve 400V 415V ac 3 Module	4
WOMCB6332 *MX9MC332 ^MOD6332 †MSN332	MCB Miniature Circuit Breaker 6kA 3 Pole 32 Amp C Curve 400V 415V ac 3 Module	4
WOMCB6363 *MX9MC363 ^MOD6363 †MSN363	MCB Miniature Circuit Breaker 6kA 3 Pole 63 Amp C Curve 400V 415V ac 3 Module	4
WOMCB6363R *MX9MC363R †MSN363R <b>RED TOGGLE</b>	MCB Miniature Circuit Breaker 6kA 3 Pole 63 Amp C Curve 400V 415V ac 3 Module Main Switch Suitable	4



Wolverine DIN Rail mounted RCBOs (WORCBO series) offer personal and equipment protection applications in domestic and small commercial environments as well as circuit protection up to 6kA. The Compact SLIM module design, allows for more RCDs/MCBs to be installed in the one enclosure. The range enables true Double Pole Disconnection in a Single Module RCBO. Complies with AS/NZS 61009-1 and IEC 61009-1.

RCBO Series Type A RCBO 4.5kA & 6kA		Qty Per Box
WORCBO45110 *RCBE210/30S	RCBO Residual Current Breaker with Overcurrent Protection 4.5kA 1 Pole 10A 230V 240V 30mA Type A 1 Module	10
WORCBO45116 *RCBE216/30S	RCBO Residual Current Breaker with Overcurrent Protection 4.5kA 1 Pole 16A 230V 240V 30mA Type A 1 Module	10
WORCBO45120 *RCBE220/30S	RCBO Residual Current Breaker with Overcurrent Protection 4.5kA 1 Pole 20A 230V 240V 30mA Type A 1 Module	10
WORCBO45125 *RCBE225/30S	RCBO Residual Current Breaker with Overcurrent Protection 4.5kA 1 Pole 25A 230V 240V 30mA Type A 1 Module	10
WORCBO45132 *RCBE232/30S	RCBO Residual Current Breaker with Overcurrent Protection 4.5kA 1 Pole 32A 230V 240V 30mA Type A 1 Module	10
WORCBO6110 *MX9R3110 ^M6RCBD1030CAN †ADC910T	RCBO Residual Current Breaker with Overcurrent Protection 6kA 1 Pole 10A 230V 240V 30mA Type A 1 Module	10
WORCBO6116 *MX9R3116 ^M6RCBD1630CAN †ADC916T	RCBO Residual Current Breaker with Overcurrent Protection 6kA 1 Pole 16A 230V 240V 30mA Type A 1 Module	10
WORCBO6120 *MX9R3120 ^M6RCBD2030CAN †ADC920T	RCBO Residual Current Breaker with Overcurrent Protection 6kA 1 Pole 20A 230V 240V 30mA Type A 1 Module	10
WORCBO6125 *MX9R3125 ^M6RCBD2530CAN †ADC925T	RCBO Residual Current Breaker with Overcurrent Protection 6kA 1 Pole 25A 230V 240V 30mA Type A 1 Module	10
WORCBO6132 *MX9R3132 ^M6RCBD3230CAN †ADC932T	RCBO Residual Current Breaker with Overcurrent Protection 6kA 1 Pole 32A 230V 240V 30mA Type A 1 Module	10



Wolverine DIN Rail mounted Main Switch Isolators (WOMSW Series) are suited to board configurations up to 100A. Red switch toggles enable easy identification along with the green/red indication of internal contact positions. Ideal for applications where isolation is required either in the main or in local sub boards.

Please note: WOMSW are only switches and do not operate to provide additional circuit protection.

Main Switch Series		Qty Per Box
<b>WOMSW180</b> ^MOD6MS180	Main Switch 1 Pole 80A 230V 240V 1 Module	12
<b>WOMSW1100</b> *MX9MS1100 ^MOD6MS1100	Main Switch 1 Pole 100A 230V 240V 1 Module	12
<b>WOMSW380</b>	Main Switch 3 Pole 80A 400V 415V 3 Module	4
<b>WOMSW3100</b> *MX9MS3100 ^MOD6MS3100	Main Switch 3 Pole 100A 400V 415V 3 Module	4



### 10 Year Manufacturer's Warranty

At Trader, we pride ourselves in providing high quality products backed by 100 years of Gerard knowledge and experience.

We design and manufacture all of our products to the highest standards giving homeowners and electricians peace of mind when they use a Trader product.



Wolverine DIN Rail mounted RCDs (WORCD Series) ensures both personal and equipment protection in domestic and small commercial environments. Installation features include easy-to-use terminals, DIN rail assembly and U-style busbar suitability. Type A sensing is ideal for general everyday protection and available in 30mA operating current. Sensitive to both sinusoidal and unidirectional pulsed currents which may be present in modern electrical systems with electronic devices. Complies with AS/NZS and IEC 61008-1.

RCD Series Type A		Qty Per Box
<b>WORCD6240</b> *MX9RC240 ^MOD6RCCB24030A †CDA240T	RCD Residual Current Device 6kA 2 Pole 40 Amp 230 240V 30mA Type A 2 Module	6
<b>WORCD6263</b> *MX9RC263 ^MOD6RCCB26330A †CDA463T	RCD Residual Current Device 6kA 2 Pole 63 Amp 230 240V 30mA Type A 2 Module	6
<b>WORCD6440</b> *MX9RC440 ^MOD6RCCB44030A †CDA440T	RCD Residual Current Device 6kA 4 Pole 40 Amp 400 415V 30mA Type A 4 Module	3
<b>WORCD6463</b> *MX9RC463 ^MOD6RCCB46330A †CDA463T	RCD Residual Current Device 6kA 4 Pole 63 Amp 400 415V 30mA Type A 4 Module	3

## EQUIVALENT CROSS REFERENCE CHARTS

TRADER Wolverine	*Clipsal	^NHP	†Hager
WOMCB6110	MX9MC110	MOD6110	MSN110
WOMCB6116	MX9MC116	MOD6116	MSN116
WOMCB6120	MX9MC120	MOD6120	MSN120
WOMCB6125	MX9MC125	MOD6125	MSN125
WOMCB6132	MX9MC132	MOD6132	MSN132
WOMCB6163	MX9MC163	MOD6163	MSN163
WOMCB6163R	MX9MC163R	Nil	MSN163R
WOMCB6310	MX9MC310	MOD6310	MSN310
WOMCB6316	MX9MC316	MOD6316	MSN316
WOMCB6320	MX9MC320	MOD6320	MSN320
WOMCB6325	MX9MC325	MOD6325	MSN325
WOMCB6332	MX9MC332	MOD6332	MSN332
WOMCB6363	MX9MC363	MOD6363	MSN363
WOMCB6363R	MX9MC363R	Nil	MSN363R
WORCB045110	RCBE210/30S	Nil	Nil
WORCB045116	RCBE216/30S	Nil	Nil
WORCB045120	RCBE220/30S	Nil	Nil
WORCB045125	RCBE225/30S	Nil	Nil
WORCB045132	RCBE232/30S	Nil	Nil
WORCB06110	MX9R3110	M6RCBD1030CAN	ADC910T
WORCB06116	MX9R3116	M6RCBD1630CAN	ADC916T
WORCB06120	MX9R3120	M6RCBD2030CAN	ADC920T
WORCB06125	MX9R3125	M6RCBD2530CAN	ADC925T
WORCB06132	MX9R3132	M6RCBD3230CAN	ADC932T

TRADER Wolverine	*Clipsal	^NHP	†Hager
WOMSW180	Nil	MOD6MS180	Nil
WOMSW1100	MX9MS1100	MOD6MS1100	Nil
WOMSW380	Nil	Nil	Nil
WOMSW3100	MX9MS3100	MOD6MS3100	Nil
WORCD6240	MX9RC240	MOD6RCCB24030A	CDA240T
WORCD6263	MX9RC263	MOD6RCCB26330A	CDA463T
WORCD6440	MX9RC440	MOD6RCCB44030A	CDA440T
WORCD6463	MX9RC463	MOD6RCCB46330A	CDA463T

The Trader Cross Reference Chart is to be used as a general guide only. Competitor products used in cross references provide a similar function to the equivalent Trader product, but are certainly not the same. There are also gaps in the cross reference tables where we have not been able to locate an equivalent offer, but things change and you should check with those suppliers for confirmation.

\* The Clipsal Brand and the associated product codes are Trademarks of Schneider Electric (Australia) Pty Ltd

^ The NHP Brand and the associated product codes are Trademarks of NHP Electrical Engineering Products Pty Ltd

† Hager and associated product codes are Trademarks of Hager Electro and the Hager Group (Australia)



100 Years of Gerard Electrical Tradition

1300 301 838

[service@gsme.com.au](mailto:service@gsme.com.au)

[gsme.com.au](http://gsme.com.au)

