

## 10 Series

\*See Vintage catalogue for further detail



**PLEASE NOTE all SKUs are MADE TO ORDER within 5 business days, subject to availability.**



### Scan to view 10 Series Catalogue Pages

Includes all product codes and Images.



### Scan to view 10 Series Selection form

Includes all product codes and descriptions

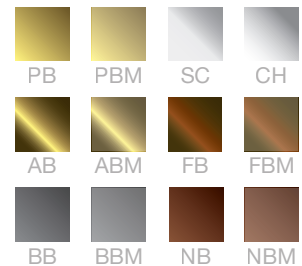
#### Cleaning Guide:

1. Remove covers from switches, they are legal and safe with the covers removed it is not necessary to turn the power off.
2. Remove old laquer with thinners or acetone applied with a soft cloth.
3. Repolish with brass/metal polish
4. Apply a clear metal lacquer which is available in spray packs.

## Bungalow / Tudor Switches & Accessories with Flat Plate Covers Range

- Bungalow, popular interwar and postwar, refers to a cottage with low-pitched roof and wide verandah.
- Tudor-style homes, popular from 1915-1940, stand out for their steeply pitched roofs, stonework, and wooden beams.
- 67mm Square Base.
- Bungalow Mounting blocks are required for installation - purchased separately
- Available in all 12 finishes.

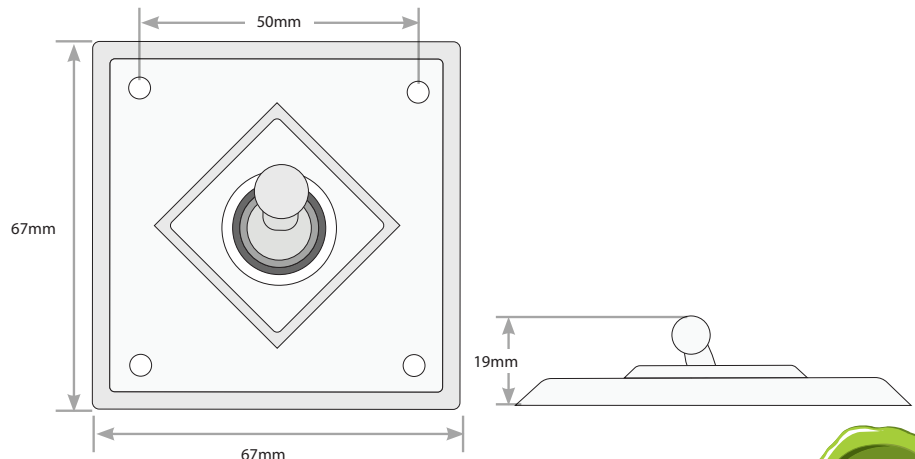
PB - Polished Brass  
PBM - Polished Brass Matt  
CH - Chrome  
SC - Satin Chrome  
AB - Antique Brass  
ABM - Antique Brass Matt  
BB - Black Bronze  
BBM - Black Bronze Matt  
FB - Florentine Bronze  
FBM - Florentine Bronze Matt  
NB - Non-Relieved Bronze  
NBM - Non-Relieved Bronze Matt



- White Power Point and Brown Power Point also available.

### 10 Series Accessories include:

- Switch - 20A/16AX
- Power Point - 10A
- 3 Speed Fan Controller - 1.8uF to 2.7uF 75VA Capacitor
- TV Socket - F to Pal Type
- Pay TV Socket - F to F Type Foxtel Approved
- Data Socket - Cat 6
- Phone Socket - RJ45 Cat 3
- Dimmer - Rotary Dimmer 400W Max
- Replacement Parts
  - Replacement Parts such as Covers only, Inner Covers, Inner Covers with Mechanisms, Inner Cover with Dimmer's, Inner Cover with Fan Controller's, Fan Controller Knobs and Dimmer Knobs, available separately.



#### Certification Number:

All 10 Series Switches: GMA-514156-EA, GMA-514735-EA

#### GSM Electrical (Australia) Pty Ltd

Level 2, 142-144 Fullarton Road, Rose Park SA 5067

P: 1300 301 838 E: vintage@gsmc.com.au

www.gsmc.com.au



Data Specification Sheet  
November 2023

## Bungalow Mounting Block Series

\*See Vintage catalogue for further detail



**PLEASE NOTE all SKUs are MADE TO ORDER within 5 business days, subject to availability.**



### Scan to view Bungalow Mounting Block Catalogue Pages

Includes all product codes and Images.



### Scan to view Bungalow Mounting Block Selection form

Includes all product codes and descriptions

#### Cleaning Guide:

1. Remove covers from switches, they are legal and safe with the covers removed it is not necessary to turn the power off.
2. Remove old lacquer with thinners or acetone applied with a soft cloth.
3. Repolish with brass/metal polish
4. Apply a clear metal lacquer which is available in spray packs.

## Mounting Blocks for Bungalow and Tudor Range

- Suitable for 10 Series ONLY.
- Bungalow, popular interwar and postwar, refers to a cottage with low-pitched roof and wide verandah.
- Tudor-style homes, popular from 1915-1940, stand out for their steeply pitched roofs, stonework, and wooden beams.
- Pre-Drilled to suit 10 Series plates.
- Available in Pine (P) and Cedar (C)

### MOUNTING BLOCK PROFILE



### Bungalow Mounting Block Include:

- 1 Gang Square (96mm x 96mm) CBLOCK101G (P / C) SSW
- 2 Gang Oblong (96mm x 167mm) CBLOCK102G (P / C) RSW
- 2 Gang Oblong Power Outlet (96mm x 167mm) CBLOCK102G (P / C) RSKT
- 3 Gang Oblong (96mm x 240mm) CBLOCK103G (P / C) RSW
- 3 Gang Oblong Power Outlet (96mm x 240mm) CBLOCK103G (P / C) RSKTSW
- 4 Gang Oblong (96mm x 310mm) CBLOCK104G (P / C) RSW
- 4 Gang Oblong Power Outlet (96mm x 310mm) CBLOCK410G (P / C) RSKT
- 4 Gang Square (167mm x 167mm) CBLOCK104G (P / C) SSW
- 4 Gang Square Power Outlet (167mm x 167mm) CBLOCK104G (P / C) SSKT



CBLOCK101GPSSW



CBLOCK101GCSSW



CBLOCK104GPRSW



CBLOCK104GCRSW



CBLOCK102GPRSW



CBLOCK102GCRSW



CBLOCK410GPRSKT



CBLOCK104GCRSKT



CBLOCK102GPRSKT



CBLOCK102GCRSKT



CBLOCK104GPSSW



CBLOCK104GCSSW



CBLOCK103GPRSW



CBLOCK103GCRSW



CBLOCK104GPSSKT



CBLOCK104GCSSKT



CBLOCK103GPRSKTSW



CBLOCK103GCRSKTSW

### GSM Electrical (Australia) Pty Ltd

Level 2, 142-144 Fullarton Road, Rose Park SA 5067

P: 1300 301 838 E: vintage@g sme.com.au

www.g sme.com.au



## 20 Series

\*See Vintage catalogue for further detail



**PLEASE NOTE all SKUs are MADE TO ORDER within 5 business days, subject to availability.**



### Scan to view 20 Series Catalogue Pages

Includes all product codes and Images.



### Scan to view 20 Series Selection form

Includes all product codes and descriptions

#### Cleaning Guide:

1. Remove covers from switches, they are legal and safe with the covers removed it is not necessary to turn the power off.
2. Remove old laquer with thinners or acetone applied with a soft cloth.
3. Repolish with brass/metal polish
4. Apply a clear metal lacquer which is available in spray packs.

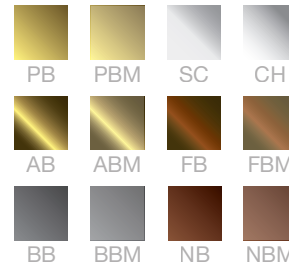
## Deep Fluted Cover for Shallow Porcelain Base Range

- 58 Diameter, 12mm High Porcelain Base, 45mm Total Height.
- Classic Mounting blocks are suited for installation - purchased separately.



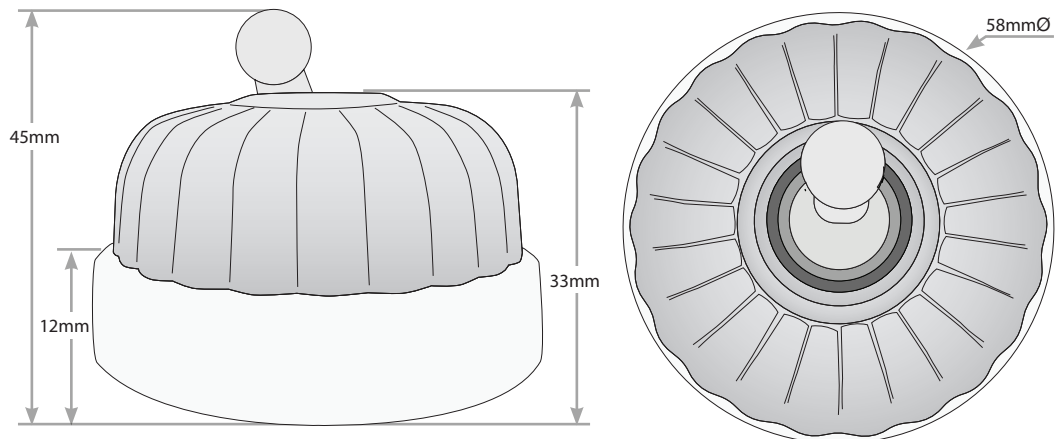
- Available in all 12 finishes.

- PB - Polished Brass
- PBM - Polished Brass Matt
- CH - Chrome
- SC - Satin Chrome
- AB - Antique Brass
- ABM - Antique Brass Matt
- BB - Black Bronze
- BBM - Black Bronze Matt
- FB - Florentine Bronze
- FBM - Florentine Bronze Matt
- NB - Non-Relieved Bronze
- NBM - Non-Relieved Bronze Matt



### 20 Series Accessories include:

- Switch - 20A/16AX
- 3 Speed Fan Controller - 1.8uF to 2.7uF 75VA Capacitor
- Dimmer - Rotary Dimmer 400W Max
- Replacement Parts
  - Replacement Parts such as Covers only, Inner Covers, Inner Covers with Mechanisms, Inner Cover with Dimmer's, Inner Cover with Fan Controller's, Fan Controller Knobs and Dimmer Knobs, available separately.



#### Certification Number:

All 20 Series Switches: GMA-514156-EA, GMA-514735-EA

#### GSM Electrical (Australia) Pty Ltd

Level 2, 142-144 Fullarton Road, Rose Park SA 5067

P: 1300 301 838 E: vintage@gsm.com.au

www.gsm.com.au



Data Specification Sheet  
November 2023

## 25 Series

\*See Vintage catalogue for further detail



**PLEASE NOTE all SKUs are MADE TO ORDER within 5 business days, subject to availability.**



### Scan to view 25 Series Catalogue Pages

Includes all product codes and Images.



### Scan to view 25 Series Selection form

Includes all product codes and descriptions

#### Cleaning Guide:

1. Remove covers from switches, they are legal and safe with the covers removed it is not necessary to turn the power off.
2. Remove old laquer with thinners or acetone applied with a soft cloth.
3. Repolish with brass/metal polish
4. Apply a clear metal lacquer which is available in spray packs.

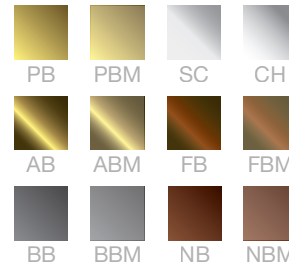
## Deep Smooth Cover for Shallow Porcelain Base Range

- 58 Diameter, 12mm High Porcelain Base, 45mm Total Height.
- Classic Mounting blocks are suited for installation - purchased separately.



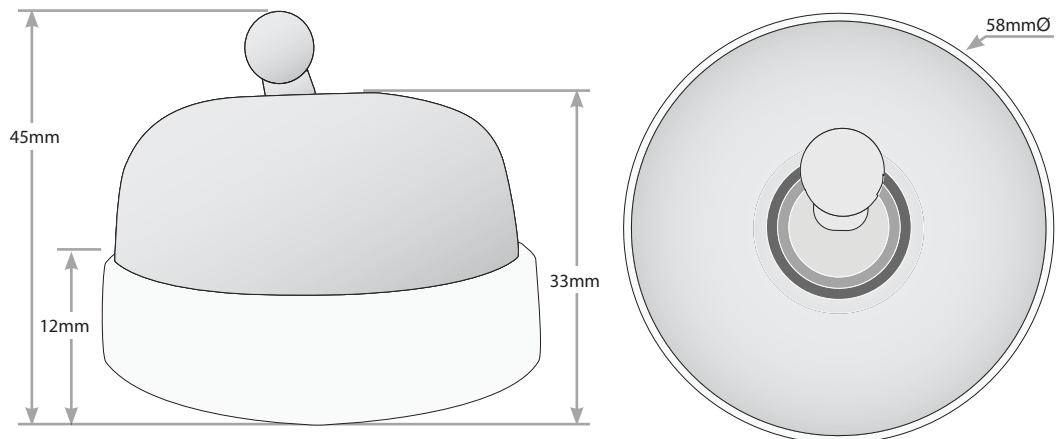
- Available in all 12 finishes.

PB - Polished Brass  
PBM - Polished Brass Matt  
CH - Chrome  
SC - Satin Chrome  
AB - Antique Brass  
ABM - Antique Brass Matt  
BB - Black Bronze  
BBM - Black Bronze Matt  
FB - Florentine Bronze  
FBM - Florentine Bronze Matt  
NB - Non-Relieved Bronze  
NBM - Non-Relieved Bronze Matt



### 25 Series Accessories include:

- Switch - 20A/16AX
- 3 Speed Fan Controller - 1.8uF to 2.7uF 75VA Capacitor
- Dimmer - Rotary Dimmer 400W Max
- Replacement Parts
  - Replacement Parts such as Covers only, Inner Covers, Inner Covers with Mechanisms, Inner Cover with Dimmer's, Inner Cover with Fan Controller's, Fan Controller Knobs and Dimmer Knobs, available separately.



#### Certification Number:

All 25 Series Switches: GMA-514156-EA, GMA-514735-EA

#### GSM Electrical (Australia) Pty Ltd

Level 2, 142-144 Fullarton Road, Rose Park SA 5067

P: 1300 301 838 E: vintage@gsm.com.au

www.gsm.com.au



Data Specification Sheet  
November 2023

## 30 Series

\*See Vintage catalogue for further detail



**PLEASE NOTE all SKUs are MADE TO ORDER within 5 business days, subject to availability.**



### Scan to view 30 Series Catalogue Pages

Includes all product codes and Images.



### Scan to view 30 Series Selection form

Includes all product codes and descriptions

#### Cleaning Guide:

1. Remove covers from switches, they are legal and safe with the covers removed it is not necessary to turn the power off.
2. Remove old laquer with thinners or acetone applied with a soft cloth.
3. Repolish with brass/metal polish
4. Apply a clear metal lacquer which is available in spray packs.

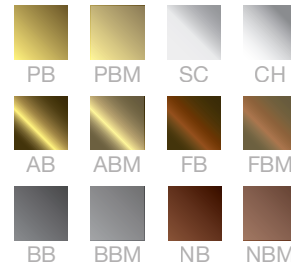
## Deep Porcelain Base Shallow Smooth Cover and Deep Porcelain Base Range

- 58 Diameter, 18mm High Porcelain Base, 45mm Total Height.
- Classic Mounting blocks are suited for installation - purchased separately.



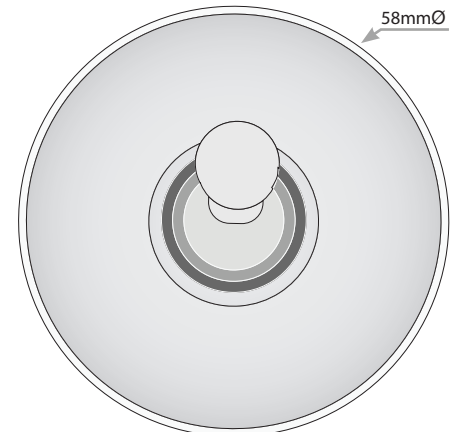
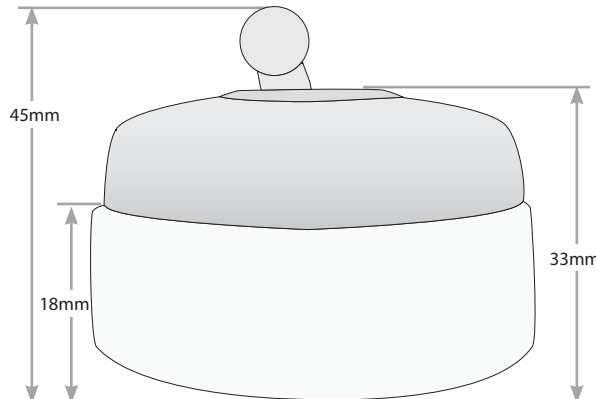
- Available in all 12 finishes.

PB - Polished Brass  
 PBM - Polished Brass Matt  
 CH - Chrome  
 SC - Satin Chrome  
 AB - Antique Brass  
 ABM - Antique Brass Matt  
 BB - Black Bronze  
 BBM - Black Bronze Matt  
 FB - Florentine Bronze  
 FBM - Florentine Bronze Matt  
 NB - Non-Relieved Bronze  
 NBM - Non-Relieved Bronze Matt



### 30 Series Accessories include:

- Switch - 20A/16AX
- 3 Speed Fan Controller - 1.8uF to 2.7uF 75VA Capacitor
- Dimmer - Rotary Dimmer 400W Max
- Replacement Parts
  - Replacement Parts such as Covers only, Inner Covers, Inner Covers with Mechanisms, Inner Cover with Dimmer's, Inner Cover with Fan Controller's, Fan Controller Knobs and Dimmer Knobs, available separately.



#### Certification Number:

All 30 Series Switches: GMA-514156-EA, GMA-514735-EA

#### GSM Electrical (Australia) Pty Ltd

Level 2, 142-144 Fullarton Road, Rose Park SA 5067

P: 1300 301 838 E: vintage@gsm.com.au

www.gsm.com.au



Data Specification Sheet  
November 2023

## 31GA Series

\*See Vintage catalogue for further detail



**PLEASE NOTE all SKUs are MADE TO ORDER within 5 business days, subject to availability.**



### Scan to view 31GA Series Catalogue Pages

Includes all product codes and Images.



### Scan to view 31GA Series Selection form

Includes all product codes and descriptions

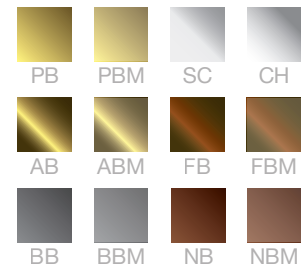
#### Cleaning Guide:

1. Remove covers from switches, they are legal and safe with the covers removed it is not necessary to turn the power off.
2. Remove old laquer with thinners or acetone applied with a soft cloth.
3. Repolish with brass/metal polish
4. Apply a clear metal lacquer which is available in spray packs.

## Grid Assembly Only with Shallow Cover Smooth and Deep Porcelain Base Range

- 58 Diameter, 18mm High Porcelain Base, 55mm Total Height.
- Classic Mounting blocks are suited for installation - purchased separately.
- Available in all 12 finishes.

- PB - Polished Brass
- PBM - Polished Brass Matt
- CH - Chrome
- SC - Satin Chrome
- AB - Antique Brass
- ABM - Antique Brass Matt
- BB - Black Bronze
- BBM - Black Bronze Matt
- FB - Florentine Bronze
- FBM - Florentine Bronze Matt
- NB - Non-Relieved Bronze
- NBM - Non-Relieved Bronze Matt



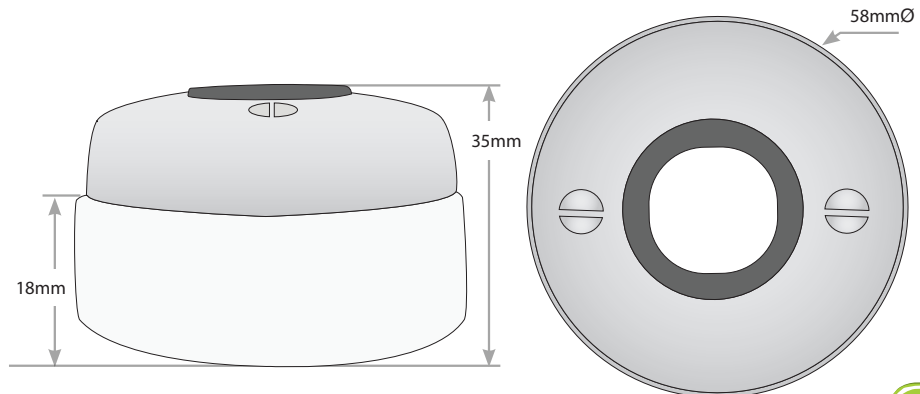
- 31GA Series DOES NOT come pre-populated, Mechanisms are sold seperately.

### Mechanisms suited for 31GA Series:

Catalogue Number	Description
MESWBPR	Switch Mechanism Bell Press Return 10AX/16A 250V
MESWBPRBK	Switch Mechanism Bell Press Return 10AX/16A 250V Black
MESWBPRMBK	Switch Mechanism Bell Press Return 10AX/16A 250V Matt Black
MESW32OVEN	Switch Mechanism 32A 250V Labelled OVEN
MESW32OVENBK	Switch Mechanism 32A 250V Labelled OVEN Black
MESW32HOB	Switch Mechanism 32A 250V Labelled HOB
MESW32HOB BK	Switch Mechanism 32A 250V Labelled HOB Black
MESW32HOBMBK	Switch Mechanism 32A 250V Labelled HOB Matt Black
MESW35OO	Switch Mechanism 3 Position 10AX 16A 250V Labelled SENSOR OFF ON
MESW35OOBK	Switch Mechanism 3 Position 10AX 16A 250V Labelled SENSOR OFF ON Black
MESW35OOMBK	Switch Mechanism 3 Position 10AX 16A 250V Labelled SENSOR OFF ON Matt Black
MESW3AOM	Switch Mechanism 3 Position 10AX 16A 250V Labelled AUTO OFF MAN
MESW3AOMBK	Switch Mechanism 3 Position 10AX 16A 250V Labelled AUTO OFF MAN Black
MESW3AOMMBK	Switch Mechanism 3 Position 10AX 16A 250V Labelled AUTO OFF MAN Matt Black
MERJ6CM	Data Outlet Clipin Mechanism Cat 6
MERJ45PH8P4C	RJ45 Cat 3 Phone Jack
MERJ45PH8P4C	RJ45 Cat 3 Phone Jack
METVFFCMFX	TV Socket F to F Type Connection Modular Clip Foxtel Approved
METVFFPCM	TV Socket F Type to PAL Modular Clip



Scan to view Meerkat Data Sheets



#### Certification Number:

All 31GA Series Switches: GMA-514156-EA, GMA-514735-EA

#### GSM Electrical (Australia) Pty Ltd

Level 2, 142-144 Fullarton Road, Rose Park SA 5067

P: 1300 301 838 E: vintage@gsm.com.au

www.gsm.com.au



Data Specification Sheet  
November 2023

## 45 Series

\*See Vintage catalogue for further detail



**PLEASE NOTE all SKUs are MADE TO ORDER within 5 business days, subject to availability.**



### Scan to view 45 Series Catalogue Pages

Includes all product codes and Images.



### Scan to view 45 Series Selection form

Includes all product codes and descriptions

#### Cleaning Guide:

1. Remove covers from switches, they are legal and safe with the covers removed it is not necessary to turn the power off.
2. Remove old laquer with thinners or acetone applied with a soft cloth.
3. Repolish with brass/metal polish
4. Apply a clear metal lacquer which is available in spray packs.

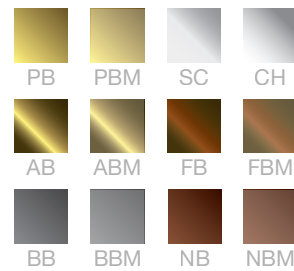
## Deep Fluted Cover Range

- 53 Diameter, 35mm High.
- Classic Mounting blocks are suited for installation - purchased separately.



- Available in all 12 finishes.

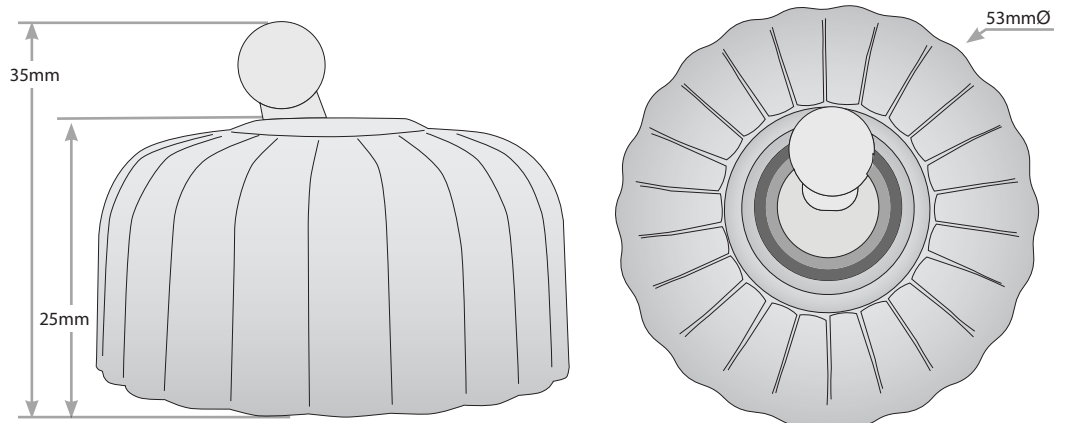
PB - Polished Brass  
PBM - Polished Brass Matt  
CH - Chrome  
SC - Satin Chrome  
AB - Antique Brass  
ABM - Antique Brass Matt  
BB - Black Bronze  
BBM - Black Bronze Matt  
FB - Florentine Bronze  
FBM - Florentine Bronze Matt  
NB - Non-Relieved Bronze  
NBM - Non-Relieved Bronze Matt



- White Square and Brown Square Toggle also available.

### 45 Series Accessories include:

- Switch - 20A/16AX
- 3 Speed Fan Controller - 1.8uF to 2.7uF 75VA Capacitor
- TV Socket - F to Pal Type
- Pay TV Socket - F to F Type Foxtel Approved
- Data Socket - Cat 6
- Phone Socket - RJ45 Cat 3
- Dimmer - Rotary Dimmer 400W Max
- Replacement Parts
  - Replacement Parts such as Covers only, Inner Covers, Inner Covers with Mechanisms, Inner Cover with Dimmer's, Inner Cover with Fan Controller's, Fan Controller Knobs and Dimmer Knobs, available separately.



#### Certification Number:

All 45 Series Switches: GMA-514156-EA, GMA-514735-EA

#### GSM Electrical (Australia) Pty Ltd

Level 2, 142-144 Fullarton Road, Rose Park SA 5067

P: 1300 301 838 E: vintage@gsm.com.au

www.gsm.com.au



Data Specification Sheet  
November 2023

## 55 Series

\*See Vintage catalogue for further detail



**PLEASE NOTE all SKUs are MADE TO ORDER within 5 business days, subject to availability.**



### Scan to view 55 Series Catalogue Pages

Includes all product codes and Images.



### Scan to view 55 Series Selection form

Includes all product codes and descriptions

#### Cleaning Guide:

1. Remove covers from switches, they are legal and safe with the covers removed it is not necessary to turn the power off.
2. Remove old laquer with thinners or acetone applied with a soft cloth.
3. Repolish with brass/metal polish
4. Apply a clear metal lacquer which is available in spray packs.

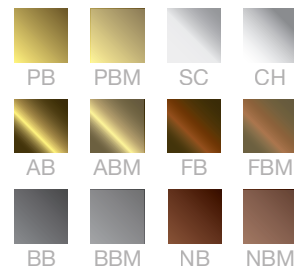
## Deep Smooth Cover Range

- 53 Diameter, 35mm High.
- Classic Mounting blocks are suited for installation - purchased separately.



- Available in all 12 finishes.

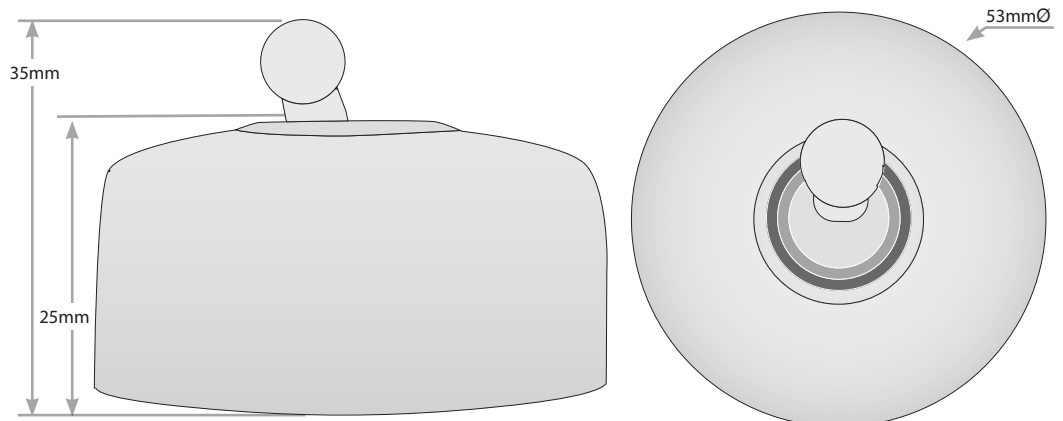
PB - Polished Brass  
PBM - Polished Brass Matt  
CH - Chrome  
SC - Satin Chrome  
AB - Antique Brass  
ABM - Antique Brass Matt  
BB - Black Bronze  
BBM - Black Bronze Matt  
FB - Florentine Bronze  
FBM - Florentine Bronze Matt  
NB - Non-Relieved Bronze  
NBM - Non-Relieved Bronze Matt



- White Square and Brown Square Toggle also available.

### 55 Series Accessories include:

- Switch - 20A/16AX
- 3 Speed Fan Controller - 1.8uF to 2.7uF 75VA Capacitor
- TV Socket - F to Pal Type
- Pay TV Socket - F to F Type Foxtel Approved
- Data Socket - Cat 6
- Phone Socket - RJ45 Cat 3
- Dimmer - Rotary Dimmer 400W Max
- Replacement Parts
  - Replacement Parts such as Covers only, Inner Covers, Inner Covers with Mechanisms, Inner Cover with Dimmer's, Inner Cover with Fan Controller's, Fan Controller Knobs and Dimmer Knobs, available separately.



#### Certification Number:

All 55 Series Switches: GMA-514156-EA, GMA-514735-EA

#### GSM Electrical (Australia) Pty Ltd

Level 2, 142-144 Fullarton Road, Rose Park SA 5067

P: 1300 301 838 E: vintage@gsm.com.au

www.gsm.com.au



Data Specification Sheet  
November 2023



## 56 Series

\*See Vintage catalogue for further detail



**PLEASE NOTE all SKUs are MADE TO ORDER within 5 business days, subject to availability.**



### Scan to view 56 Series Catalogue Pages

Includes all product codes and images.



### Scan to view 56 Series Selection form

Includes all product codes and descriptions

#### Cleaning Guide:

1. Remove covers from switches, they are legal and safe with the covers removed it is not necessary to turn the power off.
2. Remove old laquer with thinners or acetone applied with a soft cloth.
3. Repolish with brass/metal polish
4. Apply a clear metal lacquer which is available in spray packs.

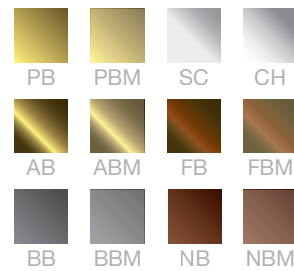
## Socket Range

- 50 Diameter, 29mm High.
- Classic Mounting blocks are suited for installation - purchased separately.

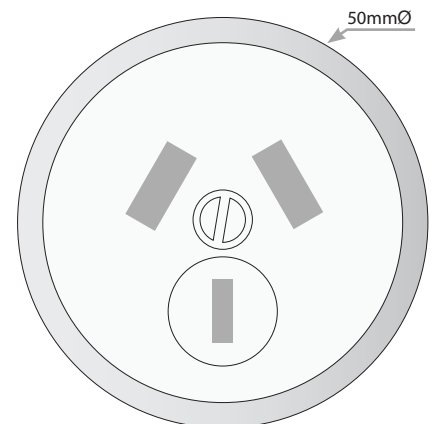
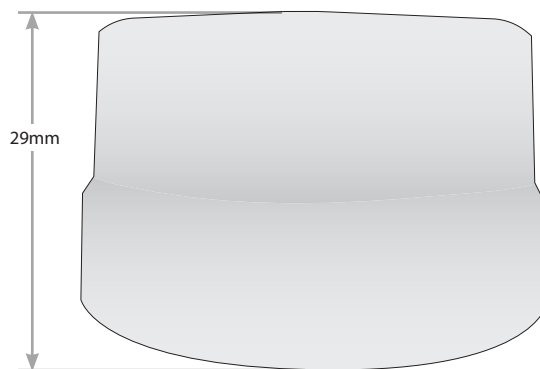


- Available in all 12 finishes.

PB - Polished Brass  
PBM - Polished Brass Matt  
CH - Chrome  
SC - Satin Chrome  
AB - Antique Brass  
ABM - Antique Brass Matt  
BB - Black Bronze  
BBM - Black Bronze Matt  
FB - Florentine Bronze  
FBM - Florentine Bronze Matt  
NB - Non-Relieved Bronze  
NBM - Non-Relieved Bronze Matt



- 10A and 15A
- White Power Point and Brown Power Point available.
- Covers only also available.



**Certification Number:**  
GMA-514156-EA

**GSM Electrical (Australia) Pty Ltd**  
Level 2, 142-144 Fullarton Road, Rose Park SA 5067  
P: 1300 301 838 E: vintage@gsmc.com.au  
[www.gsmc.com.au](http://www.gsmc.com.au)



Data Specification Sheet  
November 2023

## 85 Series

\*See Vintage catalogue for further detail



**PLEASE NOTE all SKUs are MADE TO ORDER within 5 business days, subject to availability.**



### Scan to view 85 Series Catalogue Pages

Includes all product codes and images.



### Scan to view 85 Series Selection form

Includes all product codes and descriptions

#### Cleaning Guide:

1. Remove covers from switches, they are legal and safe with the covers removed it is not necessary to turn the power off.
2. Remove old laquer with thinners or acetone applied with a soft cloth.
3. Repolish with brass/metal polish
4. Apply a clear metal lacquer which is available in spray packs.

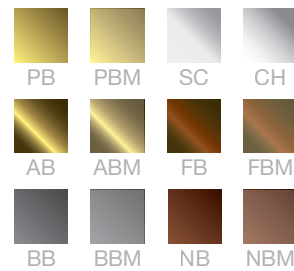
## Deep Smooth for Federation Range

- Federation style, popular from 1890 to 1951, characterised by red brick, stained glass, verandahs, tessellated tiles, and pressed-metal ceilings.
- 53 Diameter, 35mm High.
- Classic Mounting blocks are suited for installation - purchased separately.



- Available in all 12 finishes.

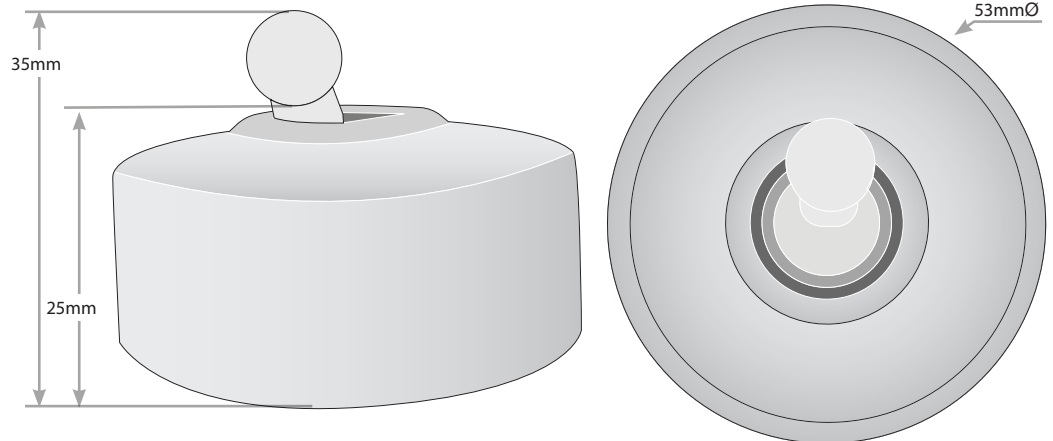
PB - Polished Brass  
PBM - Polished Brass Matt  
CH - Chrome  
SC - Satin Chrome  
AB - Antique Brass  
ABM - Antique Brass Matt  
BB - Black Bronze  
BBM - Black Bronze Matt  
FB - Florentine Bronze  
FBM - Florentine Bronze Matt  
NB - Non-Relieved Bronze  
NBM - Non-Relieved Bronze Matt



- White Square and Brown Square Toggle also available.

### 85 Series Accessories include:

- Switch - 20A/16AX
- 3 Speed Fan Controller - 1.8uF to 2.7uF 75VA Capacitor
- TV Socket - F to Pal Type
- Pay TV Socket - F to F Type Foxtel Approved
- Data Socket - Cat 6
- Phone Socket - RJ45 Cat 3
- Dimmer - Rotary Dimmer 400W Max
- Replacement Parts
  - Replacement Parts such as Covers only, Inner Covers, Inner Covers with Mechanisms, Inner Cover with Dimmer's, Inner Cover with Fan Controller's, Fan Controller Knobs and Dimmer Knobs, available separately.



#### Certification Number:

All 85 Series Switches: GMA-514156-EA, GMA-514735-EA

#### GSM Electrical (Australia) Pty Ltd

Level 2, 142-144 Fullarton Road, Rose Park SA 5067

P: 1300 301 838 E: vintage@gsm.com.au

www.gsm.com.au



Data Specification Sheet  
November 2023

## 90 Series

\*See Vintage catalogue for further detail



**PLEASE NOTE all SKUs are MADE TO ORDER within 5 business days, subject to availability.**



### Scan to view 90 Series Catalogue Pages

Includes all product codes and Images.



### Scan to view 90 Series Selection form

Includes all product codes and descriptions

#### Cleaning Guide:

1. Remove covers from switches, they are legal and safe with the covers removed it is not necessary to turn the power off.
2. Remove old laquer with thinners or acetone applied with a soft cloth.
3. Repolish with brass/metal polish
4. Apply a clear metal lacquer which is available in spray packs.

## Pull Cord Switches

- 62 Diameter, 63mm High.

- Available in all 12 finishes.

PB - Polished Brass

PBM - Polished Brass Matt

CH - Chrome

SC - Satin Chrome

AB - Antique Brass

ABM - Antique Brass Matt

BB - Black Bronze

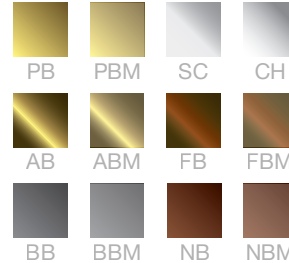
BBM - Black Bronze Matt

FB - Florentine Bronze

FBM - Florentine Bronze Matt

NB - Non-Relieved Bronze

NBM - Non-Relieved Bronze Matt



- Pull Cord Switch 10AX 250V~ M80
- 2 Way
- 4 terminal (Common, 1, 2, Loop terminals)
- Ø56mm
- Ø4.1mm terminal holes
- 10AX
- 2m Cord
- Mounting screw centres 36mm
- Easy mounting on timber or plaster surfaces
- Cord restraint Mechanism that enables easy cable length adjustment
- Replacement Parts also available
  - Replacement Parts such as Covers only, white, Brown or Black cord, Pine, Cedar or Black cord weight sold separately.



#### Certification Number:

GMA-505281 for HYSWPC Pull Cord Series.

#### GSM Electrical (Australia) Pty Ltd

Level 2, 142-144 Fullarton Road, Rose Park SA 5067

P: 1300 301 838 E: vintage@gsm.com.au

www.gsm.com.au



## BAKELITE Series

\*See Vintage catalogue for further detail



**PLEASE NOTE all SKUs are MADE TO ORDER within 5 business days, subject to availability.**



### Scan to view BAKELITE Series Catalogue Pages

Includes all product codes and Images.



### Scan to view BAKELITE Series Selection form

Includes all product codes and descriptions

#### Cleaning Guide:

1. Remove covers from switches, they are legal and safe with the covers removed it is not necessary to turn the power off.
2. Remove old laquer with thinners or acetone applied with a soft cloth.
3. Repolish with brass/metal polish
4. Apply a clear metal lacquer which is available in spray packs.

## BAKELITE Range

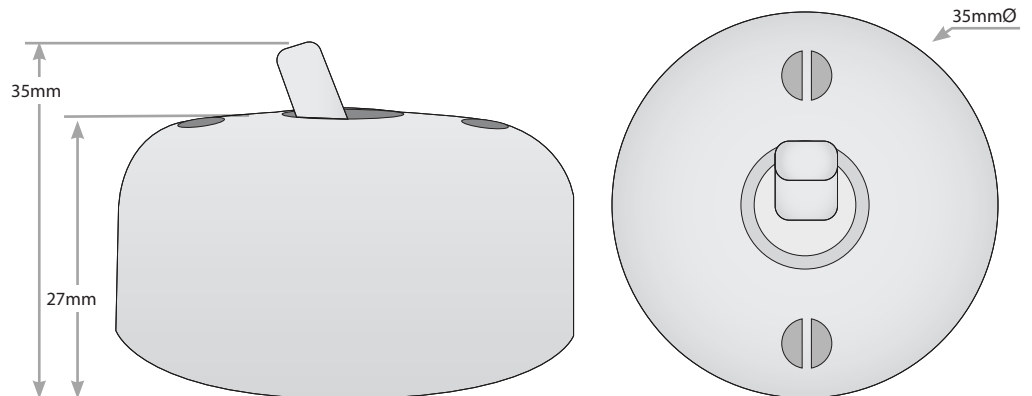
- Socket - 50mm diameter, 28mm high.
- Switch - 55mm diameter, 35mm high.
- Classic Mounting blocks are suited for installation - purchased separately.



- Available in White and Brown.

### BAKELITE Series Accessories include:

- Switch - 20A/16AX
- Power Point - 10A
- 3 Speed Fan Controller - 1.8uF to 2.7uF 75VA Capacitor
- TV Socket - F to Pal Type
- Pay TV Socket - F to F Type Foxtel Approved
- Data Socket - Cat 6
- Phone Socket - RJ45 Cat 3
- Dimmer - Rotary Dimmer 400W Max
- Suspension Kits
- Ceiling Rose
- Lamp Holders
- Replacement Parts
  - Replacement Parts such as Covers only, Inner Covers, Inner Covers with Mechanisms, Inner Cover with Dimmer's, Inner Cover with Fan Controller's, Fan Controller Knobs and Dimmer Knobs, available separately.



#### Certification Number:

All BAKELITE Series Switches: GMA-514156-EA, GMA-514735-EA

#### GSM Electrical (Australia) Pty Ltd

Level 2, 142-144 Fullarton Road, Rose Park SA 5067

P: 1300 301 838 E: vintage@gsm.com.au

www.gsm.com.au



Data Specification Sheet  
November 2023

## Galleries and Coolie Shades

\*See Vintage catalogue for further detail



**PLEASE NOTE** all SKUs are **MADE TO ORDER** within **5 business days**, subject to availability.



### Scan to view Galleries and Coolie Shades Catalogue Pages

Includes all product codes and Images.



### Scan to view Galleries and Coolie Shades Selection form

Includes all product codes and descriptions

#### Cleaning Guide:

1. Remove covers from switches, they are legal and safe with the covers removed it is not necessary to turn the power off.
2. Remove old lacquer with thinners or acetone applied with a soft cloth.
3. Repolish with brass/metal polish
4. Apply a clear metal lacquer which is available in spray packs.

## Lighting Accessories

### Galleries

- Available in White and Brown
- Sizes - 2.25 Inch, 3.25 Inch, 4.25 Inch, 5.25 Inch and 6.25 Inch
- Lamp Holder or Batten Fitting Aperture 28 mm



CGBWH225



CGBBR225



CGBWH325



CGBBR325



CGBWH425



CGBBR425



CGBWH525



CGBBR525



CGBWH625



CGBBR625



### Coolie Shades

- Available in White, Blue, Pink and Green.
- Sizes - 9 Inch Plain and 8.25 Inch Ornate
- Lamp Shade or Batten Fitting Aperture 28 mm



CCSBWH9



CCSBPK9



CCSBGR9



CCSBBL9



CCSBWH825



CCSBPK825



CCSBGR825



CCSBBL825

GSM Electrical (Australia) Pty Ltd

Level 2, 142-144 Fullarton Road, Rose Park SA 5067

P: 1300 301 838 E: vintage@g sme.com.au

www.g sme.com.au



Data Specification Sheet  
November 2023

## CLASSIC Mounting Block Series

\*See Vintage catalogue for further detail



**PLEASE NOTE** all SKUs  
are **MADE TO ORDER**  
within **5 business days**,  
subject to availability.



**Scan to view Classic  
Mounting Block Series  
Catalogue Pages**

Includes all product codes and Images.



**Scan to view Classic  
Mounting Block Series  
Selection form**

Includes all product codes  
and descriptions

### Cleaning Guide:

1. Remove covers from switches, they are legal and safe with the covers removed it is not necessary to turn the power off.
2. Remove old laquer with thinners or acetone applied with a soft cloth.
3. Repolish with brass/metal polish
4. Apply a clear metal lacquer which is available in spray packs.

## Mounting Blocks

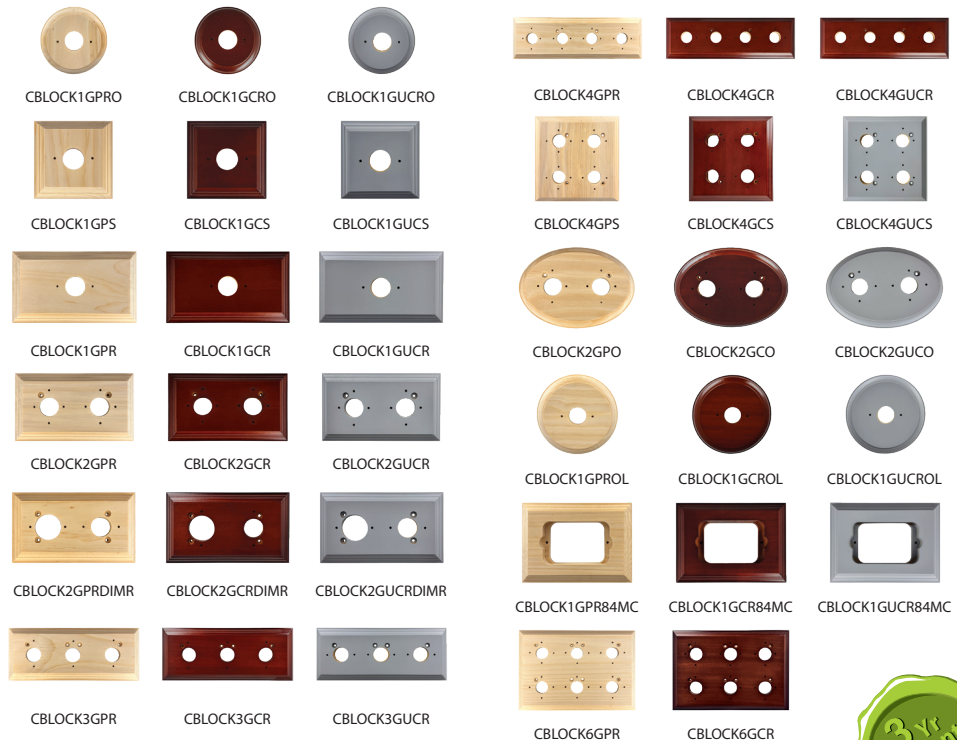
- Suitable for all Vintage series, apart from 10 Series.
- Pre-Drilled
- Available in Pine, Cedar and Undercoat.

### MOUNTING BLOCK PROFILES



### Classic Mounting Block Include:

- 1 Gang Round (88mm) CBLOCK1G (P / C / UC) RO
- 1 Gang Square (90mm x 90mm) CBLOCK1G (P / C / UC) S
- 1 Gang Oblong (90mm x 155mm) CBLOCK1G (P / C / UC) R
- 2 Gang Oblong (90mm x 155mm) (to suit dimmer) CBLOCK2G (P / C / UC) RDIMR
- 2 Gang Oblong (90mm x 155mm) CBLOCK2G (P / C / UC) R
- 3 Gang Oblong (90mm x 225mm) CBLOCK3G (P / C / UC) R
- 4 Gang Oblong (90mm x 280mm) CBLOCK4G (P / C / UC) R
- 4 Gang Square (155mm x 155mm) CBLOCK4G (P / C / UC) S
- 2 Gang Oval (110mm x 156mm) CBLOCK2G (P / C / UC) O
- 1 Gang Round (115mm) CBLOCK1G (P / C / UC) ROL
- Oblong (150mm x 107mm) CBLOCK1G (P / C / UC) R84MC
- 6 Gang Oblong (155mm x 220mm) CBLOCK6G (P / C / UC) R



GSM Electrical (Australia) Pty Ltd

Level 2, 142-144 Fullarton Road, Rose Park SA 5067

P: 1300 301 838 E: vintage@gsm.com.au

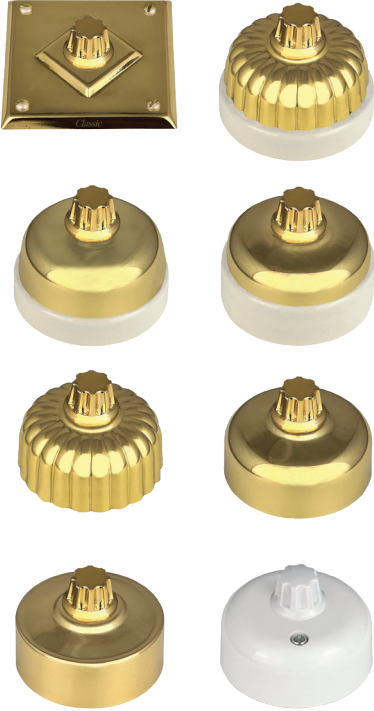
www.gsm.com.au



Data Specification Sheet  
November 2023

## Dimmers

\*See Vintage catalogue for further detail



**PLEASE NOTE all SKUs  
are MADE TO ORDER  
within 5 business days,  
subject to availability.**

### Cleaning Guide:

1. Remove covers from switches, they are legal and safe with the covers removed it is not necessary to turn the power off.
2. Remove old laquer with thinners or acetone applied with a soft cloth.
3. Repolish with brass/metal polish
4. Apply a clear metal lacquer which is available in spray packs.

## Vintage Dimmers

- Dimmers are available in 10, 20, 25, 30, 45, 55, 85 & Bakelite Series.
- Traders Dimpala DIMR is standard with Vintage Range but DIMRRIP also fits.
- Dimmer Knobs come in 7 finishes to suit all 12 Vintage finishes - available separately.
- Standard Trader Dimmer knobs DO NOT fit Vintage Dimmer assemblies.
- Dimmer with Inner Covers available separately for 10, 20, 25, 30, 45, 55 85 & Bakelite Series.



C10DIMR

Suitable for  
10 Series



C30DIMR

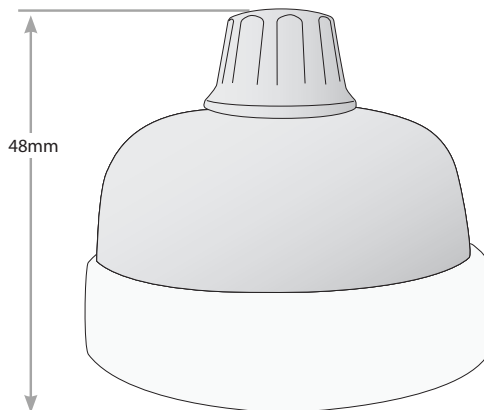
Suitable for  
20, 25 & 30 Series



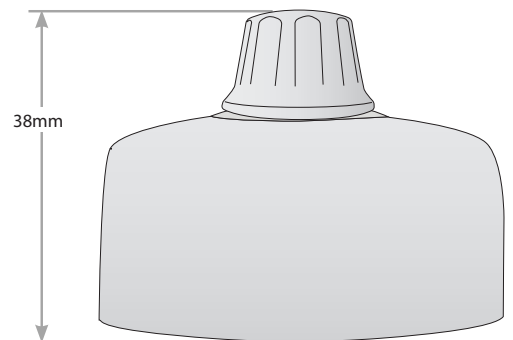
C55DIMR

Suitable for  
45, 55, 85  
& Bakelite Series

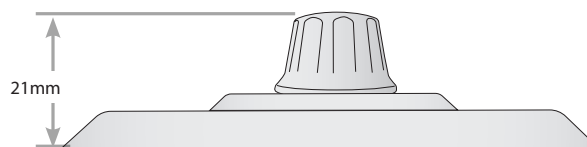
## Dimmer Knobs



**Porcelain Base Ranges  
20, 25 & 30 Series**



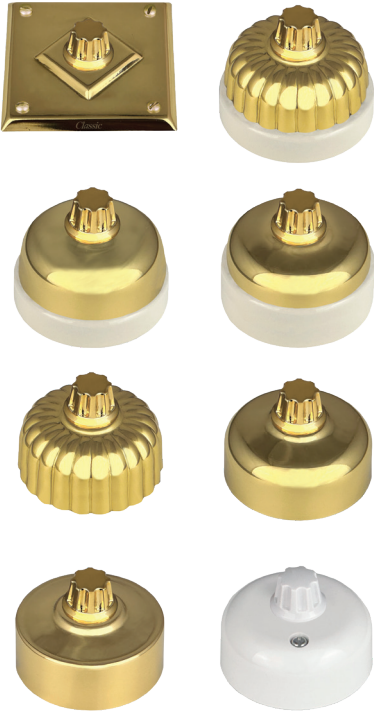
**No Porcelain Base Ranges  
45, 55, 85 & Bakelite Series**



**Square Flat Range  
10 Series**

## Fan Controllers

\*See Vintage catalogue for further detail



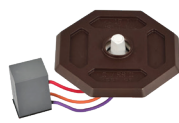
**PLEASE NOTE all SKUs are MADE TO ORDER within 5 business days, subject to availability.**

### Cleaning Guide:

1. Remove covers from switches, they are legal and safe with the covers removed it is not necessary to turn the power off.
2. Remove old laquer with thinners or acetone applied with a soft cloth.
3. Repolish with brass/metal polish
4. Apply a clear metal lacquer which is available in spray packs.

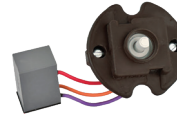
## Vintage Fan Controllers

- Fan Controllers are available in 10, 20, 25, 30, 45, 55, 85 & Bakelite Series.
- Traders Meerkat MEFC is standard with Vintage Range but MEFC2 also fit.
- Fan Controller Knobs come in 7 finishes to suit all 12 Vintage finishes - available separately.
- Standard Trader Fan Controller knobs DO NOT fit Vintage Fan Controller assemblies.
- Fan Controller with Inner Covers available separately for 10, 20, 25, 30, 45, 55 85 & Bakelite Series.



C10FC3

Suitable for  
10 Series



C30FC3

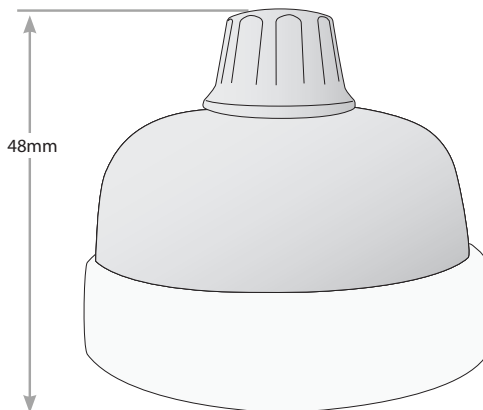
Suitable for  
20, 25 & 30 Series



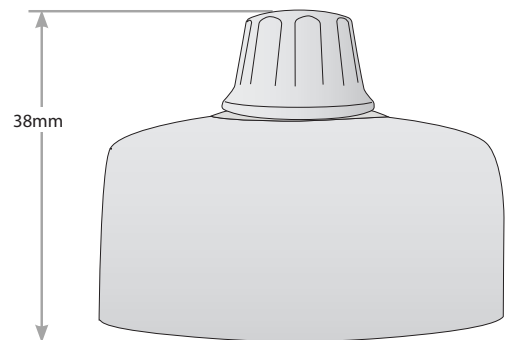
C55FC3

Suitable for  
45, 55, 85  
& Bakelite Series

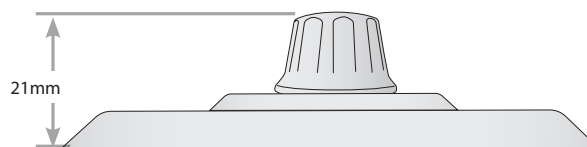
## Fan Controller Knobs



Porcelain Base Ranges  
20, 25 & 30 Series



No Porcelain Base Ranges  
45, 55, 85 & Bakelite Series



Square Flat Range  
10 Series