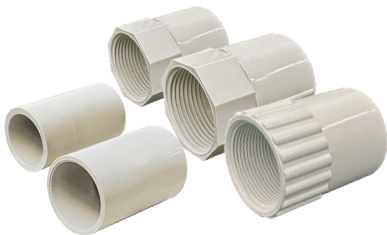


TRADER COBRATM Conduit Fittings



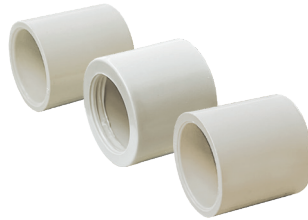
Features:

- Material: PVC (Polyvinyl chloride)
- Lower / Upper temperature range: -15°C / 60°C
- AS/NZS61386.1:2015;
IEC 61386-1: 2008 Part 1: General requirements;
IEC 61386-21: 2002 Part 21: Particular requirements – Rigid conduit systems
AS/NZS IEC 60670-1:2015 Boxes and enclosures for electrical accessories for household and similar fixed electrical installations -- Part 1: General requirements.



Couplings

Diameter 20mm, 25mm tube
Plain & Plain to threaded
Diameter 20mm, 25mm & 32mm tube



Plain Reducers

Diameter 16mm, 20mm & 25mm tube



Threaded Reducer

40mm to 32mm



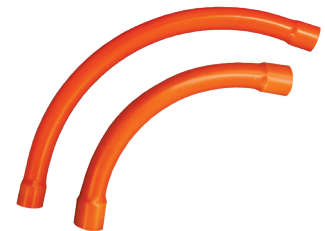
Adaptors

Diameter 20mm & 25mm tube
Plain to threaded



Straight Glands

Diameter 20mm & 25mm tube
M20, 1.5mm, Lock nut, Straight



Large Bend

Operating angle 90 degree
Diameter 25mm & 32 mm tube



Standard Bend

Operating angle 90 degree
Diameter 20mm, 25mm & 32 mm tube



Elbow Connectors

Operating angle 90 degree
Diameter 20mm & 25mm tube



Junction Boxes

Diameter 20mm & 25mm tube



Inspection Tee

Diameter 20mm & 25mm tube